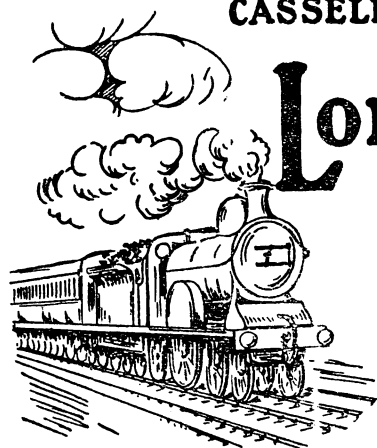


CASSELL'S TIME TABLES



London and SUBURBAN SECTION

(FOR MAIN LINE TRAINS SEE CONTENTS ON PAGE 1)

— CONTENTS —

	PAGES		PAGES
North London Railway ...	230-234	London and South Western Railway ...	322-343
London and North Western Railway ...	235-242	London, Brighton and South Coast Railway ...	344-371
Great Central Railway ...	243-245	South-Eastern & Chatham Railway ...	372-401
Midland Railway ...	246-249	Metropolitan & Gt. Central Ry. ...	402-409
Great Northern Railway ...	250-258	District Railway ...	410-414
Great Eastern Railway ...	267-300	Tube Railways ...	416-417
East London Railway ...	301, 302	Channel Islands ...	418
Midland Railway (London, Tilbury and Southend Section) ...	303-309	Continental ...	417-418
Great Western Railway ...	310-321		

W. BILL,

WOOLLEN MERCHANT,
LONDON, W.1.

Stocks only the best pre-war type of **BRITISH** Cloths.

HOMESPUNS	CHEVIOTS	FRIEZES	TWEEDS
ANGOLAS	FLANNELS	WORSTEDS	SERGES
SAXONIES	COATINGS	COSTUME CLOTHS	

(The Trade and Public Supplied.)

A visit of inspection is invited, including buyers from abroad, as samples cannot be guaranteed under present conditions.

Warehouse—31 and 29, GREAT PORTLAND ST.

Branch—93, NEW BOND STREET, LONDON, W.1.

COUNTRY AUCTIONEERS & HOUSE AGENTS.

BEXHILL-ON-SEA AND COODEN BEACH.

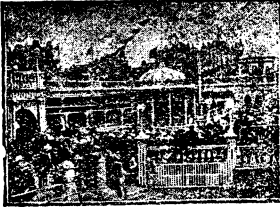
Telephone No. 212.

FOR FURNISHED AND UNFURNISHED HOUSES, BUNGALOWS & BUSINESS PREMISES.
Apply to

STAINES & CO.

7, ST. LEONARDS ROAD. (3 Minutes from Station.)

FREE LIST, MAP AND GUIDE ON APPLICATION! Telegrams: "PROPERTY, BEXHILL." THE EXCHANGE.—(Photo by Messrs. Marriott Bros., Bexhill and Hastings.)



BOURNEMOUTH AND DISTRICT.

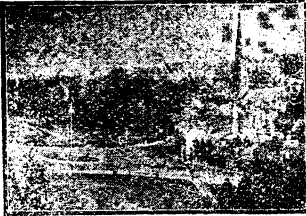
Established 1875.

LANE & SMITH,

Auctioneers, House and Estate Agents and Valuers,
81, OLD CHRISTCHURCH ROAD.

Special attention given to applicants wishing to PURCHASE or RENT Houses FURNISHED or UNFURNISHED. Also BOARDING and APARTMENT HOUSES for SALE. Maps supplied Free. Send full particulars of requirements.

Telephone: Bournemouth 35. Telegrams: "Lane, Auctioneer, Bournemouth."



BROADSTAIRS, ST. PETERS & KINGSGATE DISTRICT.

First-class Residential and Educational Centre. Dry, bracing. Record sunshine. For Particulars of FURNISHED AND UNFURNISHED (Chalk soil. Good water.)

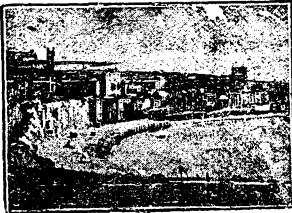
HOUSES, ESTATES AND LAND,

Apply for PRINTED REGISTER with MAP of DISTRICT to

COCKETT, HENDERSON & Co.

STATION GATES, BROADSTAIRS

& 100, JERMYN ST., London, & W.1. Tel.: 184 Broadstairs; 126 New York. Telegrams: "Cockett, Broadstairs." VIEW OF BROADSTAIRS.—(Photo by Pevsler & Son, Ltd, E.K.)



FOLKESTONE. HOUSE AGENTS.

For all HOUSES TO BE SOLD for Investment or Occupation, BOARDING HOUSES, FURNISHED HOUSES, &c., apply to—

Messrs. TEMPLE BARTON & CO., 69, SANDGATE ROAD, FOLKESTONE.

Telephone No.: 63 Folkestone.

Telegrams: "Temple Barton."

RAMEGATE & MARGATE.

FOR FURNISHED & UNFURNISHED RESIDENCES,
HOUSES & BUSINESS PREMISES.

AUCTIONEERS, VALUERS,
& ACCOUNTANTS.

Hotel
Brokers.

THE BARRIS, RAMSGATE.

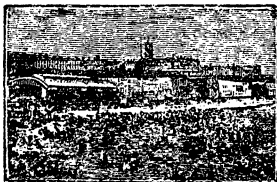
SCARLETT & GOLDSACK
32, High Street, Ramsgate. (3 doors from G.P.O.)

HOUSE,
LAND &
ESTATE
AGENTS.

ALSO AT
5, BECH SQUARE, MARGATE.

LIST OF PROPERTIES FREE.
Telegrams: "Scarlett, Ramsgate,"
"Scarlett, Margate."

Telephone Nos.: "25 Ramsgate," "25 Margate."



SEVENOAKS. For Residences, Estates, Farms— F.S.L., Kent House, 1, KING ST., St. James Sq. P. 208. **CRONKS**

LONDON AND SUBURBAN AUCTIONEERS & HOUSE AGENTS.

**RENTS COLLECTED,
ESTATES MANAGED,
VALUATIONS FOR
PROBATE,
BILAPIDATIONS, ETC.
SALES BY AUCTION,
INSURANCE AGENTS**

ROYDON, PURLEY & EDENBRIDGE

THE LARGEST AUCTION ROOMS IN SURREY.
♦ KING & EVERALL ♦
 AUCTIONEERS, SURVEYORS, VALUERS & ESTATE AGENTS.
 Head Office: FACING EAST CROYDON STATION.
 Branch Offices: SOUTH CROYDON, PURLEY & EDENBRIDGE.

Particulars also of all
PROPERTIES in the
District of

**SOUTH CROYDON,
PURLEY, KENLEY,
BANDERSTAD,
WARLINGHAM,
CATERHAM,
WALLINGTON,
EDENBRIDGE,
and OXTED.**

Tele. No. 1 "1888 Croydon"

DULWICH AND DISTRICT

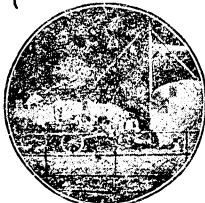
Telephone No. 1 "422 Dulwich."

MARTEN & CARNABY,
 AUCTIONEERS, HOUSE, LAND, AND ESTATE AGENTS.
 VALUATIONS, INSURANCE, MORTGAGES ARRANGED.
 (DULWICH STATION (S.E. & C.R.))
 104, Fairview Park Road, W. Dulwich, S.E.
 And in ROOMS, LONDON STATION.

Choice Houses,
Good Schools,
Open Spaces.

Furnished and Unfurnished
**HOUSES,
BUILDING SITES,
& ESTATES**
in this Attractive Residential and Educational Neighbourhood.

Write for
ILLUSTRATED GUIDE to
RESIDENTIAL DULWICH
of great use to
BUYER, RENTERS,



**RESIDENCES,
BUSINESS
PREMISES
& FLATS.**

And partakers & **PRINTERS**
REGISTERED & **PROPERTIES**
No. 244 & 70 LET from
the 1st/1920.

KENTISH TOWN, Camden Town, Highgate Road, Haverstock Hill, and Neighbourhood

Apply to
SALTER REX & CO.,
 SURVEYORS & AUCTIONEERS, LAND, HOUSE &
 ESTATE AGENTS,
311, KENTISH TOWN ROAD
 (Close to MIDLAND RAILWAY & TUBE Station) Tel. 1 "46 North."

Rents Collected,
Estates Managed,
Mortgages Arranged,
Sanitary Inspections,
Specifications, &c.

AGENCY TO THE "SUN"
CITY OFFICES:
85, LONDON WALL,
E.C.

For **HOUSES,
SHOPS, and
LAND**
in
WALTHAMSTOW
LIST
of
PROPERTIES
For SALE or
TO BE LET, &c.

WALTHAMSTOW

G. ERNEST CLARKE & CO.
 Auctioneers, Surveyors,
 and Estate Agents,
 122, Hoe Street
 (Opposite Hoe Street Station)

Rents Collected.

Property and
Estates Managed.
City Offices:
**12, COLEMAN
STREET,
BANK, E.C.**

**RESIDENTIAL AND COMMERCIAL
HOUSES,
SHOPS**
in VERY GOOD PORTIONS,
CHOICE BUILDING
LAND.

WINDHORE HILL, N.

An Attractive Residential
Suburb. District of the
New Electric Cars, with Good City Train Service.
 200 GARDEN ESTABLISHED FRUIT TREES IN VIGOROUS BLOSSOM.
E. J. WESTOBY,
 SURVEYOR, VALUER, AUCTIONEER,
 HOUSE, LAND & ESTATE AGENT.
 Offices:—B. STATION PARADE, and FACING STATION (Q.R.R.).

ESTATES MANAGED

RENTS COLLECTED,
SURVEYS AND
VALUATIONS,
MORTGAGES
ARRANGED.

FURNITURE REMOVERS AND STORERS.

Telephone: "Bromley 42." BROMLEY, Kent.
DUNNS' DEPOSITORIES
 PARK ROAD and QUEEN'S ROAD.
 COMPLETE HOUSE FURNISHERS.
 Head Office and Showrooms: 32-40, WIDMORE ROAD.

W. H. STOTT & CO., LTD.

17, Fenwick Street,
LIVERPOOL.

Brazennose Street,
MANCHESTER.

**FREIGHT BROKERS, SHIP,
INSURANCE AND GENERAL
FORWARDING AGENTS.**

Timber and Time Chartering a Speciality

■ ■ ■

**Brokers for the Sale and
Purchase of Steamers.**

■ ■ ■

**Regular line of Steamers from Liver-
pool and Manchester to Baltic Ports.**

Agents for :

Ellerman's Wilson Line, Ltd. The Esthonian Government.
Wilson's & North Eastern Railway Shipping Co., Ltd.
The Lancashire & Cheshire Insurance Corporation, Ltd., of London.

CASSELL'S TIME TABLE INSURANCE TICKET.

REGISTERED

SPECIALY GUARANTEED BY THE GENERAL ACCIDENT FIRE AND LIFE ASSURANCE CORPORATION, LIMITED, GENERAL BUILDINGS, PERTH, SCOTLAND, AND GENERAL BUILDINGS, ALDWYCH, LONDON, W.C.

To whom Notice of Claims under the following conditions must be sent within seven days of accident and within fourteen days in case of death.

£500

DEATH
From Accident
to Train.

INSURANCE TICKET

Applicable only to Passenger Trains and Steamboats in Great Britain and Ireland (including the Channel Islands and the Isle of Man),

£100

DEATH
From Accident
to Steamboat.

Five Hundred Pounds will be paid by the above Corporation to the legal personal representatives of any person who is killed by an accident causing material damage to any Passenger Train, or **ONE HUNDRED POUNDS** by an accident causing material damage to any Steamboat in which the deceased was travelling as an ordinary ticket-bearing or fare-paying passenger, or who shall have been fatally injured thereby, should death directly result within ninety days after such accident, or, should such Train accident not prove fatal, but cause within the same period of ninety days the loss of two limbs (both arms or legs, or one of each, by actual separation at or above the wrist or ankle), such holder will be entitled to receive the sum of

TWO HUNDRED and FIFTY POUNDS,

or for the loss of one limb, as above defined, the sum of **ONE HUNDRED and TWENTY-FIVE POUNDS.**

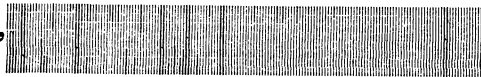
Provided that the person so killed or injured had upon his or her person, or had left at home this coupon, with his or her usual signature written prior to the accident, in the space provided below, which, together with the giving of notice within seven days of accident, or within fourteen days in case of death, to the above Corporation is the essence of this contract.

This Insurance only applies to persons over 14 and under 65 years of age, is subject to the conditions stated above and contained in the General Accident Fire and Life Assurance Corporation Act, 1907, and holds good for the current issue only, and does not extend to cover death or disablement caused by or resulting from War or Invasion.

No Person can recover under more than one Coupon Ticket in respect of the same risk.

July, 1920.

Signature



KOPS

LIME JUICE CORDIAL.

LEMON SQUASH.

Delicious Cooling Drinks.
Made from best selected Raw Juice.
When diluted goes furthest.

Ask Your Grocer for them.

KOPS CO., LONDON, S.E.5.

North London and London and North Western-Suburban

230

Broad Street to Bow and Poplar (East India Road).

Table with columns for Week Days, Broad Street, ShoreDitch, Haggerston, Dalston Junction, Hackney, Homerton, Victoria Park, Old Ford, Bow, South Bromley, and Poplar. Includes numerical values for various stations and times.

Table with columns for Week Days, Broad Street, ShoreDitch, Haggerston, Dalston Junction, Hackney, Homerton, Victoria Park, Old Ford, Bow, South Bromley, and Poplar. Includes numerical values for various stations and times.

Table with columns for Week Days, Broad Street, ShoreDitch, Haggerston, Dalston Junction, Hackney, Homerton, Victoria Park, Old Ford, Bow, South Bromley, and Poplar. Includes numerical values for various stations and times.

Table with columns for Week Days, Broad Street, ShoreDitch, Haggerston, Dalston Junction, Hackney, Homerton, Victoria Park, Old Ford, Bow, South Bromley, and Poplar. Includes numerical values for various stations and times.

Table with columns for Week Days, Broad Street, ShoreDitch, Haggerston, Dalston Junction, Hackney, Homerton, Victoria Park, Old Ford, Bow, South Bromley, and Poplar. Includes numerical values for various stations and times.

Table with columns for Week Days, Broad Street, ShoreDitch, Haggerston, Dalston Junction, Hackney, Homerton, Victoria Park, Old Ford, Bow, South Bromley, and Poplar. Includes numerical values for various stations and times.

Table with columns for Week Days, Broad Street, ShoreDitch, Haggerston, Dalston Junction, Hackney, Homerton, Victoria Park, Old Ford, Bow, South Bromley, and Poplar. Includes numerical values for various stations and times.

Table with columns for Week Days, Broad Street, ShoreDitch, Haggerston, Dalston Junction, Hackney, Homerton, Victoria Park, Old Ford, Bow, South Bromley, and Poplar. Includes numerical values for various stations and times.

For local Train Service between Victoria Park and Canning Town, see pp 268-274. N Does not run on Saturdays. S Runs on Saturdays only.

Bow and Plaistow.—This Local Service is discontinued.

North London and London and North Western—Suburban

Broad Street, &c., to Hammersmith, Kew, and Richmond.—Electric Service. 231

All 1st and 3rd Class only.

Table with columns: Week Days, Broad Street, Shoreditch, Haggerston, Dalston Junction, Milmay Park, Canonbury, Highbury (Barnsbury), Caldeonian Road & Maiden Lane, Camden Town, Kentish Town, Gospel Oak, Hampstead Heath, Finchley Road, West End Lane, Bronsbury Park, Kensal Rise, Willissen Junction, South Acton, Hammersmith, Kew Bridge, Gunnersbury, Kew Gardens, Richmond.

Table with columns: Week Days, Broad Street, Shoreditch, Haggerston, Dalston Junction, Milmay Park, Canonbury, Highbury (Barnsbury), Caldeonian Road & Maiden Lane, Camden Town, Kentish Town, Gospel Oak, Hampstead Heath, Finchley Road, West End Lane, Bronsbury Park, Kensal Rise, Willissen Junction, South Acton, Hammersmith, Kew Bridge, Gunnersbury, Kew Gardens, Richmond. Includes notes like 'Runs to Watford, Saturdays only'.

Table with columns: Week Days, Broad Street, Shoreditch, Haggerston, Dalston Junction, Milmay Park, Canonbury, Highbury (Barnsbury), Caldeonian Road & Maiden Lane, Camden Town, Kentish Town, Gospel Oak, Hampstead Heath, Finchley Road, West End Lane, Bronsbury Park, Kensal Rise, Willissen Junction, South Acton, Hammersmith, Kew Bridge, Gunnersbury, Kew Gardens, Richmond. Includes notes like 'Fast train to Watford and Tring'.

Table with columns: Week Days, Broad Street, Shoreditch, Haggerston, Dalston Junction, Milmay Park, Canonbury, Highbury (Barnsbury), Caldeonian Road & Maiden Lane, Camden Town, Kentish Town, Gospel Oak, Hampstead Heath, Finchley Road, West End Lane, Bronsbury Park, Kensal Rise, Willissen Junction, South Acton, Hammersmith, Kew Bridge, Gunnersbury, Kew Gardens, Richmond. Includes notes like 'Fast train to Watford and Tring'.

North London and London and North Western—Suburban.

232 Broad Street, &c., to Hammersmith, Kew, and Richmond.—Electric Service. All 1st and 3rd Class only.

Table with multiple columns and rows. Rows include stations like SHOREDITCH, HAGGERSTON, DALSTON JUNCTION, MILDMAY PARK, CANONBURY, HIGHBURY (BARNSBURY), CALDEONIAN ROAD & MAIDEN LANE, CAMDEN TOWN, KENTISH TOWN, GOSPEL OAK, HAMPSHAD HEATH, FINCHLEY ROAD, WEST END LANE, BRONDESBUARY, BRONDESBUARY PARK, KENSAL RISE, WILLESDEN JUNCTION, ACTON (Churchfield Rd.), SOUTH ACTON, HAMMERSMITH, KEW BRIDGE, GUNNERSBUARY, KEW GARDENS, RICHMOND. Columns contain numerical values representing departure and arrival times. Includes a 'Sundays' section and a 'Dep.' column.

D Local Passengers between Broad Street and Dalston are conveyed by these Trains on Saturdays only.
E Local Passengers between Broad Street and Dalston are conveyed by these Trains on Saturdays only.
K Passengers for Kew Bridge change at Acton.
K Passengers for Kew Bridge change at Acton.
K Local Passengers between Broad Street and Dalston are not conveyed by these Trains on Saturdays (New Station).
Passengers from Shoreditch and Haggerston on Week Days must change at Dalston.
Sundays only.
Not on Saturdays.

Read the

STORY-TELLER

The BEST Fiction Magazine on Sale

1/- net

CASSELL & CO., Ltd., La Belle Sauvage, London, E.C.4

North London and London and North Western—Suburban

(Electric Service)
1st and 3rd Class.

Richmond, Kew, and Hammersmith to Broad Street, &c.

233

Week Days.		Dep.																							
RICHMOND	1	1																							
Kew Gardens	2	2																							
GUNNERSBURY	3	3																							
Kew Bridge	4	4																							
Hammersmith	5	5																							
SOUTH ACTON	6	6																							
ACTON (Churchfield Road)	7	7																							
WILLESDEN JUNCTION	8	8																							
KENSAL RISE	9	9																							
BRONDESBURY PARK	10	10																							
BRONDESBURY	11	11																							
WEST END LANE	12	12																							
FINCHLEY ROAD	13	13																							
HAMPSTEAD HEATH	14	14																							
GOSPEL OAK	15	15																							
KENTISH TOWN	16	16																							
CAMDEN TOWN	17	17																							
MAIDEN LANE	18	18																							
CALEDONIAN ROAD & HIGHBURY (BARNSBY) CANONBURY	19	19																							
MILDMAY PARK	20	20																							
DALSTON JUNCTION	21	21																							
HAGGERSTON	22	22																							
SHOREDITCH	23	23																							
BROAD STREET	24	24																							

Week Days.		Dep.																							
RICHMOND	1	1																							
Kew Gardens	2	2																							
GUNNERSBURY	3	3																							
Kew Bridge	4	4																							
Hammersmith	5	5																							
SOUTH ACTON	6	6																							
ACTON (Churchfield Road)	7	7																							
WILLESDEN JUNCTION	8	8																							
KENSAL RISE	9	9																							
BRONDESBURY PARK	10	10																							
BRONDESBURY	11	11																							
WEST END LANE	12	12																							
FINCHLEY ROAD	13	13																							
HAMPSTEAD HEATH	14	14																							
GOSPEL OAK	15	15																							
KENTISH TOWN	16	16																							
CAMDEN TOWN	17	17																							
MAIDEN LANE	18	18																							
CALEDONIAN ROAD & HIGHBURY (BARNSBY) CANONBURY	19	19																							
MILDMAY PARK	20	20																							
DALSTON JUNCTION	21	21																							
HAGGERSTON	22	22																							
SHOREDITCH	23	23																							
BROAD STREET	24	24																							

Week Days.		Dep.																							
RICHMOND	1	1																							
Kew Gardens	2	2																							
GUNNERSBURY	3	3																							
Kew Bridge	4	4																							
Hammersmith	5	5																							
SOUTH ACTON	6	6																							
ACTON (Churchfield Road)	7	7																							
WILLESDEN JUNCTION	8	8																							
KENSAL RISE	9	9																							
BRONDESBURY PARK	10	10																							
BRONDESBURY	11	11																							
WEST END LANE	12	12																							
FINCHLEY ROAD	13	13																							
HAMPSTEAD HEATH	14	14																							
GOSPEL OAK	15	15																							
KENTISH TOWN	16	16																							
CAMDEN TOWN	17	17																							
MAIDEN LANE	18	18																							
CALEDONIAN ROAD & HIGHBURY (BARNSBY) CANONBURY	19	19																							
MILDMAY PARK	20	20																							
DALSTON JUNCTION	21	21																							
HAGGERSTON	22	22																							
SHOREDITCH	23	23																							
BROAD STREET	24	24																							

Week Days.		Dep.																							
RICHMOND	1	1																							
Kew Gardens	2	2																							
GUNNERSBURY	3	3																							
Kew Bridge	4	4																							
Hammersmith	5	5																							
SOUTH ACTON	6	6																							
ACTON (Churchfield Road)	7	7																							
WILLESDEN JUNCTION	8	8																							
KENSAL RISE	9	9																							
BRONDESBURY PARK	10	10																							
BRONDESBURY	11	11																							
WEST END LANE	12	12																							
FINCHLEY ROAD	13	13																							
HAMPSTEAD HEATH	14	14																							
GOSPEL OAK	15	15																							
KENTISH TOWN	16	16																							
CAMDEN TOWN	17	17																							
MAIDEN LANE	18	18																							
CALEDONIAN ROAD & HIGHBURY (BARNSBY) CANONBURY	19	19																							
MILDMAY PARK	20	20																							
DALSTON JUNCTION	21	21																							
HAGGERSTON	22	22																							
SHOREDITCH	23	23																							
BROAD STREET	24	24																							

For Notes see Page 234

North London and London and North Western—Suburban

234 Richmond, Kew, and Hammersmith to Broad Street, &c.

(Electric Service)
1st and 3rd Class.

Week Days.	1st and 3rd Class only.										Sundays.																		
RICHMOND	8 50	—	—	—	—	—	—	—	—	—	8 20	9 20	9 50	10 20	10 50	11 20	12 20	1 20	2 20	3 20	4 20	5 20	6 20	7 20	8 20	9 20	10 20	11 20	12 20
Kew Gardens	8 52	—	—	—	—	—	—	—	—	—	8 22	9 22	9 52	10 22	10 52	11 22	12 22	1 22	2 22	3 22	4 22	5 22	6 22	7 22	8 22	9 22	10 22	11 22	12 22
Gunnersbury	8 55	—	—	—	—	—	—	—	—	—	8 25	9 25	9 55	10 25	10 55	11 25	12 25	1 25	2 25	3 25	4 25	5 25	6 25	7 25	8 25	9 25	10 25	11 25	12 25
Kew Bridge	—	9 10	—	—	—	—	—	—	—	—	—	—	—	—	—	—	—	—	—	—	—	—	—	—	—	—	—	—	—
Hammersmith	—	—	9 40	—	—	—	—	—	—	—	—	—	—	—	—	—	—	—	—	—	—	—	—	—	—	—	—	—	—
South Acton	8 57	9 12	9 27	9 42	9 57	10 12	10 27	10 42	10 57	—	8 27	9 27	9 57	10 27	10 57	11 27	12 27	1 27	2 27	3 27	4 27	5 27	6 27	7 27	8 27	9 27	10 27	11 27	12 27
Acton (Churchfield Road)	8 59	9 14	9 29	9 44	9 59	10 14	10 29	10 44	10 59	—	8 29	9 29	9 59	10 29	10 59	11 29	12 29	1 29	2 29	3 29	4 29	5 29	6 29	7 29	8 29	9 29	10 29	11 29	12 29
Willesden Junction	9 0	9 15	9 30	9 45	10 0	10 15	10 30	10 45	11 0	—	8 30	9 30	10 0	10 30	11 0	12 0	1 0	2 0	3 0	4 0	5 0	6 0	7 0	8 0	9 0	10 0	11 0	12 0	—
Kensal Rise	9 0	9 15	9 30	9 45	10 0	10 15	10 30	10 45	11 0	—	8 30	9 30	10 0	10 30	11 0	12 0	1 0	2 0	3 0	4 0	5 0	6 0	7 0	8 0	9 0	10 0	11 0	12 0	—
Brondebury Park	9 0	9 15	9 30	9 45	10 0	10 15	10 30	10 45	11 0	—	8 30	9 30	10 0	10 30	11 0	12 0	1 0	2 0	3 0	4 0	5 0	6 0	7 0	8 0	9 0	10 0	11 0	12 0	—
Brondebury	9 0	9 15	9 30	9 45	10 0	10 15	10 30	10 45	11 0	—	8 30	9 30	10 0	10 30	11 0	12 0	1 0	2 0	3 0	4 0	5 0	6 0	7 0	8 0	9 0	10 0	11 0	12 0	—
West End Lane	9 11	9 26	9 41	9 56	10 11	—	—	—	—	—	8 41	9 41	10 11	10 41	11 11	12 11	1 11	2 11	3 11	4 11	5 11	6 11	7 11	8 11	9 11	10 11	11 11	12 11	—
Finchley Road	9 12	9 27	9 42	9 57	10 12	—	—	—	—	—	8 42	9 42	10 12	10 42	11 12	12 12	1 12	2 12	3 12	4 12	5 12	6 12	7 12	8 12	9 12	10 12	11 12	12 12	—
Hamstead Heath	9 14	9 29	9 44	9 59	10 14	—	—	—	—	—	8 44	9 44	10 14	10 44	11 14	12 14	1 14	2 14	3 14	4 14	5 14	6 14	7 14	8 14	9 14	10 14	11 14	12 14	—
Gospel Oak	9 16	9 31	9 46	10 0	10 16	—	—	—	—	—	8 46	9 46	10 16	10 46	11 16	12 16	1 16	2 16	3 16	4 16	5 16	6 16	7 16	8 16	9 16	10 16	11 16	12 16	—
Kentish Town	9 18	9 33	9 48	10 3	10 18	—	—	—	—	—	8 48	9 48	10 18	10 48	11 18	12 18	1 18	2 18	3 18	4 18	5 18	6 18	7 18	8 18	9 18	10 18	11 18	12 18	—
Camden Town	arr. 9 20	9 35	9 50	10 5	10 20	—	—	—	—	—	7 40	8 40	9 50	10 20	10 50	11 20	12 20	1 20	2 20	3 20	4 20	5 20	6 20	7 20	8 20	9 20	10 20	11 20	12 20
Malden Lane	—	—	—	—	—	—	—	—	—	—	—	—	—	—	—	—	—	—	—	—	—	—	—	—	—	—	—	—	—
Caletonian Road & Highbury (Barnsby)	9 23	9 38	9 53	10 8	10 23	—	—	—	—	—	7 42	8 42	9 52	10 22	10 52	11 22	12 22	1 22	2 22	3 22	4 22	5 22	6 22	7 22	8 22	9 22	10 22	11 22	12 22
Canonbury	9 25	9 40	9 55	10 10	10 25	—	—	—	—	—	7 43	8 43	9 53	10 23	10 53	11 23	12 23	1 23	2 23	3 23	4 23	5 23	6 23	7 23	8 23	9 23	10 23	11 23	12 23
Mildmay Park	9 26	9 41	9 56	10 11	10 26	—	—	—	—	—	7 45	8 45	9 55	10 25	10 55	11 25	12 25	1 25	2 25	3 25	4 25	5 25	6 25	7 25	8 25	9 25	10 25	11 25	12 25
Dalston Junction	9 26	9 41	9 56	10 11	10 26	—	—	—	—	—	7 49	8 49	9 59	10 29	10 59	11 29	12 29	1 29	2 29	3 29	4 29	5 29	6 29	7 29	8 29	9 29	10 29	11 29	12 29
Haggerston	9 26	9 41	9 56	10 11	10 26	—	—	—	—	—	—	—	—	—	—	—	—	—	—	—	—	—	—	—	—	—	—	—	—
Shoreditch	9 26	9 41	9 56	10 11	10 26	—	—	—	—	—	—	—	—	—	—	—	—	—	—	—	—	—	—	—	—	—	—	—	—
Broad Street	9 32	9 47	10 02	10 17	10 32	—	—	—	—	—	7 58	8 58	10 08	10 38	11 08	11 38	12 38	1 38	2 38	3 38	4 38	5 38	6 38	7 38	8 38	9 38	10 38	11 38	12 38

/ Willesden (New Station).
 D Local Passengers between Dalston and Broad Street are not conveyed by these Trains.
 G Runs 3 minutes later from Willesden Junction to Broad Street on Saturdays.
 K Passengers from Kew Bridge by these trains must change at Acton.
 N Does not run on Saturdays.
 S Runs on Saturdays only.
 † Passengers from stations between Richmond, Kew Bridge, and Kentish Town for Haggerston and Shoreditch change at Dalston Junction.

ARE YOU AN AMATEUR GARDENER?

IF SO, do you know all about

- How to Prune Fruit Trees?
- How to Prevent "Maggoty" Apples?
- Home-Grown Strawberries?
- How to Succeed with Roses?
- How to Succeed with Sweet Peas?
- Old-Fashioned Flowers?
- The Best New Flowers?

If not, read the Paper written by Experts for Amateurs—

POPULAR GARDENING

THE Paper for Amateurs

Every Friday.

2d.

Elephant & Castle, Willesden and Watford.

(Via Queen's Park).

JULY, 1920.]

Week Days																	
Elephant & Castle	15	16	17	18	19	20	21	22	23	24	25	26	27	28	29	30	31
Lambeth (North)	18	19	20	21	22	23	24	25	26	27	28	29	30	31	1	2	3
Waterloo	15	16	17	18	19	20	21	22	23	24	25	26	27	28	29	30	31
Charing Cross	15	16	17	18	19	20	21	22	23	24	25	26	27	28	29	30	31
Trafalgar Square	15	16	17	18	19	20	21	22	23	24	25	26	27	28	29	30	31
Piccadilly Circus	15	16	17	18	19	20	21	22	23	24	25	26	27	28	29	30	31
Oxford Circus	15	16	17	18	19	20	21	22	23	24	25	26	27	28	29	30	31
Regent's Park	15	16	17	18	19	20	21	22	23	24	25	26	27	28	29	30	31
Baker Street	15	16	17	18	19	20	21	22	23	24	25	26	27	28	29	30	31
Marylebone	15	16	17	18	19	20	21	22	23	24	25	26	27	28	29	30	31
Edgware Road	15	16	17	18	19	20	21	22	23	24	25	26	27	28	29	30	31
Paddington	15	16	17	18	19	20	21	22	23	24	25	26	27	28	29	30	31
Warwick Avenue	15	16	17	18	19	20	21	22	23	24	25	26	27	28	29	30	31
Maida Vale	15	16	17	18	19	20	21	22	23	24	25	26	27	28	29	30	31
Kilburn Park	15	16	17	18	19	20	21	22	23	24	25	26	27	28	29	30	31
Queen's Park	15	16	17	18	19	20	21	22	23	24	25	26	27	28	29	30	31
Kensal Green	15	16	17	18	19	20	21	22	23	24	25	26	27	28	29	30	31
Willesden (New Station) ..	15	16	17	18	19	20	21	22	23	24	25	26	27	28	29	30	31
Harlesden	15	16	17	18	19	20	21	22	23	24	25	26	27	28	29	30	31
Stonebridge Park	15	16	17	18	19	20	21	22	23	24	25	26	27	28	29	30	31
Wembley (for Sudbury) ..	15	16	17	18	19	20	21	22	23	24	25	26	27	28	29	30	31
North Wembley	15	16	17	18	19	20	21	22	23	24	25	26	27	28	29	30	31
Kenton	15	16	17	18	19	20	21	22	23	24	25	26	27	28	29	30	31
Harrow & Wealdstone	15	16	17	18	19	20	21	22	23	24	25	26	27	28	29	30	31
Headstone Lane	15	16	17	18	19	20	21	22	23	24	25	26	27	28	29	30	31
Hatch End (for Pinner) ..	15	16	17	18	19	20	21	22	23	24	25	26	27	28	29	30	31
Carpenders Park	15	16	17	18	19	20	21	22	23	24	25	26	27	28	29	30	31
Bushy and Oxhey	15	16	17	18	19	20	21	22	23	24	25	26	27	28	29	30	31
Watford (High Street)	15	16	17	18	19	20	21	22	23	24	25	26	27	28	29	30	31
Watford Junction	15	16	17	18	19	20	21	22	23	24	25	26	27	28	29	30	31

Notes.—The Tables during the night from 6 o'clock to 5 59 a.m. are shown in 2 1/2 figures, thus (12.5).

Week Days																	
Elephant & Castle	31	32	33	34	35	36	37	38	39	40	41	42	43	44	45	46	47
Lambeth (North)	32	33	34	35	36	37	38	39	40	41	42	43	44	45	46	47	48
Waterloo	31	32	33	34	35	36	37	38	39	40	41	42	43	44	45	46	47
Charing Cross	31	32	33	34	35	36	37	38	39	40	41	42	43	44	45	46	47
Trafalgar Square	31	32	33	34	35	36	37	38	39	40	41	42	43	44	45	46	47
Piccadilly Circus	31	32	33	34	35	36	37	38	39	40	41	42	43	44	45	46	47
Oxford Circus	31	32	33	34	35	36	37	38	39	40	41	42	43	44	45	46	47
Regent's Park	31	32	33	34	35	36	37	38	39	40	41	42	43	44	45	46	47
Baker Street	31	32	33	34	35	36	37	38	39	40	41	42	43	44	45	46	47
Marylebone	31	32	33	34	35	36	37	38	39	40	41	42	43	44	45	46	47
Edgware Road	31	32	33	34	35	36	37	38	39	40	41	42	43	44	45	46	47
Paddington	31	32	33	34	35	36	37	38	39	40	41	42	43	44	45	46	47
Warwick Avenue	31	32	33	34	35	36	37	38	39	40	41	42	43	44	45	46	47
Maida Vale	31	32	33	34	35	36	37	38	39	40	41	42	43	44	45	46	47
Kilburn Park	31	32	33	34	35	36	37	38	39	40	41	42	43	44	45	46	47
Queen's Park	31	32	33	34	35	36	37	38	39	40	41	42	43	44	45	46	47
Kensal Green	31	32	33	34	35	36	37	38	39	40	41	42	43	44	45	46	47
Willesden (New Station) ..	31	32	33	34	35	36	37	38	39	40	41	42	43	44	45	46	47
Harlesden	31	32	33	34	35	36	37	38	39	40	41	42	43	44	45	46	47
Stonebridge Park	31	32	33	34	35	36	37	38	39	40	41	42	43	44	45	46	47
Wembley (for Sudbury) ..	31	32	33	34	35	36	37	38	39	40	41	42	43	44	45	46	47
North Wembley	31	32	33	34	35	36	37	38	39	40	41	42	43	44	45	46	47
Kenton	31	32	33	34	35	36	37	38	39	40	41	42	43	44	45	46	47
Harrow & Wealdstone	31	32	33	34	35	36	37	38	39	40	41	42	43	44	45	46	47
Headstone Lane	31	32	33	34	35	36	37	38	39	40	41	42	43	44	45	46	47
Hatch End (for Pinner) ..	31	32	33	34	35	36	37	38	39	40	41	42	43	44	45	46	47
Carpenders Park	31	32	33	34	35	36	37	38	39	40	41	42	43	44	45	46	47
Bushy and Oxhey	31	32	33	34	35	36	37	38	39	40	41	42	43	44	45	46	47
Watford (High Street)	31	32	33	34	35	36	37	38	39	40	41	42	43	44	45	46	47
Watford Junction	31	32	33	34	35	36	37	38	39	40	41	42	43	44	45	46	47

M Runs on Mondays only.

* Calls on Saturdays only.

† Does not call on Saturdays.

"THE NEW MAGAZINE"

IS NOW ON SALE 1s. NET OF ALL BOOKSTALLS OR NEWSAGENTS
 CASSELL & COMPANY, LIMITED, LA BELLS SAUSAGE, LONDON, E.C.4

London and North Western—Suburba

JULY, 1920.]

Note.—The Trains during the night, from 8 p.m. to 5.59 a.m. are shown in *dotted* figures thus (11 43).

289

Euston and Broad Street to Willesden, Harrow and Wealdstone, Watford, Leighton Buzzard and Bletchley.

Week Days.		1020	1045	11 0	1115	1140	12 5																		
EUSTONdep.	1020	1045	11 0	1115	1140	12 5	8 30	9 30	9 35	11 5	12 5	1 5	2 0	2 45	3 55	4 5	5 5	6 30	7 45	8 45	9 40	9 45	1035	
BROAD STREET" "	1016	1041	11 0	1115	1140	12 5	8 41	9 41	9 46	11 6	12 6	1 6	2 11	3 25	4 6	5 6	6 41	7 56	8 56	9 51	9 56	1046		
WILLESDEN (Main Line arr.)" "	1031	1056	11 12	1127	1152	12 18	8 43	9 43	9 48	11 8	12 8	1 8	2 12	3 26	4 8	5 8	6 43	7 58	8 58	9 53	9 58	1048		
JUNCTION (New Stn.)" "	1057	1082	11 18	1123	1138	12 23	8 49	9 49	9 54	11 14	12 14	1 14	2 18	3 32	4 14	5 14	6 49	8 04	9 04	9 59	1004	1054		
WILLESDEN (Main Line dep.)" "	1057	1082	11 18	1123	1138	12 23	8 49	9 49	9 54	11 14	12 14	1 14	2 18	3 32	4 14	5 14	6 49	8 04	9 04	9 59	1004	1054		
HARLESSEN" "	1058	1083	11 19	1124	1139	12 24	8 50	9 50	9 55	11 15	12 15	1 15	2 19	3 33	4 15	5 15	6 50	8 05	9 05	1000	1005	1055		
STONEBRIDGE PARK" "	11 3	1108	11 19	1124	1139	12 24	8 51	9 51	9 56	11 16	12 16	1 16	2 20	3 34	4 16	5 16	6 51	8 06	9 06	1001	1006	1056		
WEMBLEY (for Sudbury)" "	11 3	1108	11 19	1124	1139	12 24	8 51	9 51	9 56	11 16	12 16	1 16	2 20	3 34	4 16	5 16	6 51	8 06	9 06	1001	1006	1056		
NORTH WEMBLEY" "	11 6	1111	11 22	1127	1142	12 27	8 52	9 52	9 57	11 17	12 17	1 17	2 21	3 35	4 17	5 17	6 52	8 07	9 07	1002	1007	1057		
KENTON" "	11 6	1111	11 22	1127	1142	12 27	8 52	9 52	9 57	11 17	12 17	1 17	2 21	3 35	4 17	5 17	6 52	8 07	9 07	1002	1007	1057		
HARROW & WEALDSTONE" "	11 12	1117	11 23	1128	1143	12 30	8 53	9 53	9 58	11 18	12 18	1 18	2 22	3 36	4 18	5 18	6 53	8 08	9 08	1003	1008	1058		
HEADSTONE LANE" "	11 12	1117	11 23	1128	1143	12 30	8 53	9 53	9 58	11 18	12 18	1 18	2 22	3 36	4 18	5 18	6 53	8 08	9 08	1003	1008	1058		
HATCH END (for Pinner)" "	11 17	1122	11 24	1129	1144	12 35	8 54	9 54	9 59	11 19	12 19	1 19	2 23	3 37	4 19	5 19	6 54	8 09	9 09	1004	1009	1059		
CARPENTER'S PARK" "	11 17	1122	11 24	1129	1144	12 35	8 54	9 54	9 59	11 19	12 19	1 19	2 23	3 37	4 19	5 19	6 54	8 09	9 09	1004	1009	1059		
BUSHY AND OXHEY" "	11 23	1128	11 25	1130	1145	12 40	8 55	9 55	10 00	11 20	12 20	1 20	2 24	3 38	4 20	5 20	6 55	8 10	9 10	1005	1010	1060		
WATFORD (High Street)" "	11 23	1128	11 25	1130	1145	12 40	8 55	9 55	10 00	11 20	12 20	1 20	2 24	3 38	4 20	5 20	6 55	8 10	9 10	1005	1010	1060		
WATFORD JUNCTIONarr.	11 23	1128	11 25	1130	1145	12 40	8 55	9 55	10 00	11 20	12 20	1 20	2 24	3 38	4 20	5 20	6 55	8 10	9 10	1005	1010	1060		
WATFORD JUNCTIONdep.	11 31	1136	11 33	1138	1153	12 48	9 03	10 03	10 08	11 23	12 23	1 23	2 27	3 41	4 23	5 23	6 58	8 13	9 13	1006	1011	1061		
KING'S LANGLEY †arr.	11 31	1136	11 33	1138	1153	12 48	9 03	10 03	10 08	11 23	12 23	1 23	2 27	3 41	4 23	5 23	6 58	8 13	9 13	1006	1011	1061		
BOXMOOR ‡" "	11 45	1150	11 42	1147	12 02	1 12	9 17	10 17	10 22	11 32	12 32	1 32	2 36	3 50	4 32	5 32	7 03	8 18	9 18	1007	1012	1062		
BERKHAMSTED" "	11 53	1158	11 50	1155	12 10	1 20	9 25	10 25	10 30	11 40	12 40	1 40	2 44	3 58	4 40	5 40	7 11	8 26	9 26	1008	1013	1063		
TRING" "	12 1	12 6	12 03	12 08	12 23	1 33	9 31	10 31	10 36	11 46	12 46	1 46	2 50	4 04	4 46	5 46	7 17	8 32	9 32	1009	1014	1064		
CHADDINGTON" "	12 1	12 6	12 03	12 08	12 23	1 33	9 31	10 31	10 36	11 46	12 46	1 46	2 50	4 04	4 46	5 46	7 17	8 32	9 32	1009	1014	1064		
LEIGHTON BUZZARD" "	12 36	12 41	12 33	12 38	12 53	1 43	10 5	11 05	11 10	12 20	1 20	2 24	3 38	4 20	5 20	6 55	8 10	9 10	1005	1010	1060			
BLETCHLEY" "	12 36	12 41	12 33	12 38	12 53	1 43	10 5	11 05	11 10	12 20	1 20	2 24	3 38	4 20	5 20	6 55	8 10	9 10	1005	1010	1060			

- B Calls at Watford Junction at 10.7 when required to take up Passengers on notice being given at the Station.
- H Calls at Willesden Junction to take up Passengers, and not to set down Passengers from Euston.
- N Does not run on Saturdays.
- S Runs on Saturdays only.
- T Through Train from Broad Street to the L. & N.W.R.

- c Passengers from Broad Street by trains marked "c" travel via Hampstead Junction Line and change at Willesden Junction.
- k Wednesday and Saturday nights only.
- l Calls to take up only.
- m Saturdays only.
- † Not on Saturdays.
- ‡ Boxmoor and Hemel Hempstead.
- § King's Langley and Abbots Langley.

GARDENING HANDBOOKS

Useful Manuals for all Classes of Horticulturists. Edited by H. H. THOMAS, Editor of "Popular Gardening." Fully illustrated throughout

Paper Covers, 1s. 6d. net each

TWO NEW VOLUMES.

**THE GARDEN MONTH BY MONTH.
GARDEN HANDBOOK FOR BEGINNERS.**

PREVIOUSLY PUBLISHED.

- FIRST STEPS IN GARDENING
- LITTLE GARDENS: HOW TO MAKE THE MOST OF THEM.
- SWEET PEAS AND HOW TO GROW THEM.
- GARDENING DIFFICULTIES SOLVED.
- GARDEN PLANNING AND PLANTING.
- INDOOR GARDENING.
- GARDEN WORK FOR EVERY DAY.
- THE GREENHOUSE: ITS FLOWERS AND MANAGEMENT
- BULB GROWING FOR AMATEURS.
- VEGETABLE GROWING FOR AMATEURS.
- ROSE GROWING FOR AMATEURS.
- THE CARNATION BOOK.
- GARDENING: A COMPLETE GUIDE.
- ROCKERIES: HOW TO MAKE AND PLANT THEM.
- FRUIT GROWING FOR AMATEURS.
- EVERYBODY'S FLOWER GARDEN.
- 1,000 GARDENING HINTS.
- THE GARDEN; HOW TO MAKE IT PAY.
- ALLOTMENT GARDENING; A COMPLETE GUIDE.

London and North Western—Suburban

240

Note.—The Trains during the night, from 6 o p.m. to 5 59 a.m. are shown in *dark* figures, thus (11 15)

[JULY, 1920.]

Bletchley, Leighton Buzzard, Watford, Harrow and Wealdstone and Willesden to Euston and Broad Street.

Week Days.	N				S			
BLETCHLEY.....dep.	3 55	4 35	5 15	5 55	6 45	7 25	8 05	8 45
LEIGHTON BUZZARD.....	3 58	4 38	5 18	5 58	6 48	7 28	8 08	8 48
CHEDDINGTON.....	4 02	4 42	5 22	6 02	6 52	7 32	8 12	8 52
TRING.....	4 05	4 45	5 25	6 05	6 55	7 35	8 15	8 55
BERKHAMSTED.....	4 08	4 48	5 28	6 08	6 58	7 38	8 18	8 58
BOXMOOR.....	4 11	4 51	5 31	6 11	7 01	7 41	8 21	9 01
KING'S LANGLEY.....	4 14	4 54	5 34	6 14	7 04	7 44	8 24	9 04
WATFORD JUNCTION.....arr.	4 17	4 57	5 37	6 17	7 07	7 47	8 27	9 07
WATFORD JUNCTION.....dep.	4 44	5 24	6 04	6 44	7 34	8 14	8 54	9 34
WATFORD (High Street).....	4 47	5 27	6 07	6 47	7 37	8 17	8 57	9 37
BUSHEY AND OXHEY.....	4 50	5 30	6 10	6 50	7 40	8 20	9 00	9 40
CARPENDERS PARK.....	4 53	5 33	6 13	6 53	7 43	8 23	9 03	9 43
HATCH END (for Pinner).....	4 56	5 36	6 16	6 56	7 46	8 26	9 06	9 46
HEADSTONE LANE.....	4 59	5 39	6 19	6 59	7 49	8 29	9 09	9 49
HARROW & WEALDSTONE.....	5 0	5 40	6 20	7 0	7 52	8 32	9 12	9 52
KENTON.....	5 3	5 43	6 23	7 3	8 55	9 35	10 15	10 55
NORTH WEMBLEY.....	5 6	5 46	6 26	7 6	9 58	10 38	11 18	11 58
WEMBLEY (for Sudbury).....	5 9	5 49	6 29	7 9	10 6	10 46	11 26	12 6
STONEBRIDGE PARK.....	5 12	5 52	6 32	7 12	11 9	11 39	12 19	12 59
HARLESDEN.....	5 15	5 55	6 35	7 15	11 12	11 52	12 32	13 12
WILLESDEN (New Station arr. JUNCTION (Main Line).....	5 18	5 58	6 38	7 18	11 15	11 55	12 35	13 15
WILLESDEN (New Station dep. JUNCTION (Main Line).....	5 21	6 01	6 41	7 21	11 18	11 58	12 38	13 18
BROAD STREET.....arr.	5 24	6 04	6 44	7 24	11 21	12 01	12 41	13 21
WATFORD JUNCTION.....	5 27	6 07	6 47	7 27	11 24	12 04	12 44	13 24
EUSTON.....	5 30	6 10	6 50	7 30	11 27	12 07	12 47	13 27

Week Days.	N				S			
BLETCHLEY.....dep.	3 55	4 35	5 15	5 55	6 45	7 25	8 05	8 45
LEIGHTON BUZZARD.....	3 58	4 38	5 18	5 58	6 48	7 28	8 08	8 48
CHEDDINGTON.....	4 02	4 42	5 22	6 02	6 52	7 32	8 12	8 52
TRING.....	4 05	4 45	5 25	6 05	6 55	7 35	8 15	8 55
BERKHAMSTED.....	4 08	4 48	5 28	6 08	6 58	7 38	8 18	8 58
BOXMOOR.....	4 11	4 51	5 31	6 11	7 01	7 41	8 21	9 01
KING'S LANGLEY.....	4 14	4 54	5 34	6 14	7 04	7 44	8 24	9 04
WATFORD JUNCTION.....arr.	4 17	4 57	5 37	6 17	7 07	7 47	8 27	9 07
WATFORD JUNCTION.....dep.	4 44	5 24	6 04	6 44	7 34	8 14	8 54	9 34
WATFORD (High Street).....	4 47	5 27	6 07	6 47	7 37	8 17	8 57	9 37
BUSHEY AND OXHEY.....	4 50	5 30	6 10	6 50	7 40	8 20	9 00	9 40
CARPENDERS PARK.....	4 53	5 33	6 13	6 53	7 43	8 23	9 03	9 43
HATCH END (for Pinner).....	4 56	5 36	6 16	6 56	7 46	8 26	9 06	9 46
HEADSTONE LANE.....	4 59	5 39	6 19	6 59	7 49	8 29	9 09	9 49
HARROW & WEALDSTONE.....	5 0	5 40	6 20	7 0	7 52	8 32	9 12	9 52
KENTON.....	5 3	5 43	6 23	7 3	8 55	9 35	10 15	10 55
NORTH WEMBLEY.....	5 6	5 46	6 26	7 6	9 58	10 38	11 18	11 58
WEMBLEY (for Sudbury).....	5 9	5 49	6 29	7 9	10 6	10 46	11 26	12 6
STONEBRIDGE PARK.....	5 12	5 52	6 32	7 12	11 9	11 39	12 19	12 59
HARLESDEN.....	5 15	5 55	6 35	7 15	11 12	11 52	12 32	13 12
WILLESDEN (New Station arr. JUNCTION (Main Line).....	5 18	5 58	6 38	7 18	11 15	11 55	12 35	13 15
WILLESDEN (New Station dep. JUNCTION (Main Line).....	5 21	6 01	6 41	7 21	11 18	11 58	12 38	13 18
BROAD STREET.....arr.	5 24	6 04	6 44	7 24	11 21	12 01	12 41	13 21
WATFORD JUNCTION.....	5 27	6 07	6 47	7 27	11 24	12 04	12 44	13 24
EUSTON.....	5 30	6 10	6 50	7 30	11 27	12 07	12 47	13 27

Dunstable and Luton Branch.														
Week Days Only.	T				N				S				B	
EUSTON.....dep.	5 20	5 40	6 00	6 20	6 35	6 55	7 15	7 35	7 50	8 10	8 30	8 50	9 10	9 30
LEIGHTON BUZZARD.....	5 23	5 43	6 03	6 23	6 38	6 58	7 18	7 38	7 53	8 13	8 33	8 53	9 13	9 33
STANDRIDGE FORD.....arr.	5 26	5 46	6 06	6 26	6 41	7 01	7 21	7 41	7 56	8 16	8 36	8 56	9 16	9 36
DUNSTABLE.....dep.	5 53	6 13	6 33	6 53	7 08	7 28	7 48	8 08	8 23	8 43	9 03	9 23	9 43	10 03
DUNSTABLE (Church St.).....	5 56	6 16	6 36	6 56	7 11	7 31	7 51	8 11	8 26	8 46	9 06	9 26	9 46	10 06
LUTON (G.N.R.).....arr.	6 26	6 46	7 06	7 26	7 41	8 01	8 21	8 41	8 56	9 16	9 36	9 56	10 16	10 36
LUTON (G.N.R.).....dep.	6 30	6 50	7 10	7 30	7 45	8 05	8 25	8 45	9 00	9 20	9 40	10 00	10 20	10 40
DUNSTABLE (Church St.).....	6 33	6 53	7 13	7 33	7 48	8 08	8 28	8 48	9 13	9 33	9 53	10 13	10 33	10 53
DUNSTABLE.....arr.	6 36	6 56	7 16	7 36	7 51	8 11	8 31	8 51	9 16	9 36	9 56	10 16	10 36	10 56
STANDRIDGE FORD.....	6 39	6 59	7 19	7 39	7 54	8 14	8 34	8 54	9 19	9 39	9 59	10 19	10 39	10 59
LEIGHTON BUZZARD.....	6 42	7 02	7 22	7 42	7 57	8 17	8 37	8 57	9 22	9 42	10 02	10 22	10 42	11 02
EUSTON.....arr.	6 45	7 05	7 25	7 45	8 00	8 20	8 40	9 00	9 25	9 45	10 05	10 25	10 45	11 05

For Notes see Page 241.

Notes.
 N On Sats. arrives Euston to 50.
 S Does not run on Saturdays.
 B Runs on Saturdays only.
 T Through Trains between Leighton Buzzard and Luton.

London and North Western—Suburban

JULY, 1920.]

Note.—The Trains during the night, from 6 o p.m. to 5 55 a.m., are shown in *dork* figures, thus (12 45)

241

L. & N. W. R.] Bletchley, Leighton Buzzard, Watford, Harrow and Wealdstone and Willesden to Euston and Broad Street.

Sundays.																				
BLETCHLEY	dep.	3	53	7	25	
LEIGHTON BUZZARD	dep.	
CHEDDINGTON	dep.	
TRING	dep.	
BERKHAMSTED	dep.	
BOKMOOR†	dep.	
KING'S LANGLEY‡	dep.	
WATFORD JUNCTION	arr.	
WATFORD JUNCTION	dep.	5	9	8	35	
WATFORD (High Street)	dep.	
BUSHEY AND OKNEY	dep.	
CARPENDERS PARK	dep.	
HATCH END (for Pinner)	dep.	
HEADSTONE LANE	dep.	
HARROW & WEALDSTONE	dep.	
KENTON	dep.	
NORTH WEMBLEY	dep.	
WEMBLEY (for Sudbury)	dep.	
STONEBRIDGE PARK	dep.	
HARLESDEN	dep.	
WILLESDEN (New Station)	arr.	
JUNCTION (Main Line)	arr.	4	41	5	23	9	7	
WILLESDEN (New Station)	dep.	9	20	10	30	11	20	
JUNCTION (Main Line)	dep.	
BROAD STREET	arr.	
EUSTON	arr.	5	5	5	50	9	30	10	30	11	30	12	10	1	0	1	25	2	30	4

H Calls at Willesden junction to set down passengers, and not to take up passengers for Euston.
N Does not run on Saturdays.
S Runs on Saturdays only.
† Passengers to Broad Street by trains marked a travel via the Hampstead Junction Line and change at Willesden Junction.

* Runs on Saturdays only.
 † Does not run on Saturdays.
 ‡ Hornoor for Hamel Hempstead.
 ¶ King's Langley and Abbots Langley.

Willesden Junction (High Level) and Earl's Court. (Electric trains, 1st and 3rd class only). * For Trains between Broad Street and Willesden see pp. 232-234.

Week Days.																			
WILLESDEN JUNCTION	dep.	5	16	5	58	6	40	7	20	7	43	8	6	8	25	8	37	8	53
ST. QUINTIN PARK	dep.
UXBRIDGE ROAD	dep.
KENSINGTON (A. ROAD)	arr.
WILLESDEN JUNCTION	arr.
ST. QUINTIN PARK	arr.
UXBRIDGE ROAD	arr.
KENSINGTON (A. ROAD)	dep.
WILLESDEN JUNCTION	dep.
ST. QUINTIN PARK	dep.
UXBRIDGE ROAD	dep.
KENSINGTON (A. ROAD)	arr.
WILLESDEN JUNCTION	arr.

MAGDALENE

By E. S. STEVENS

2/- NET

A Rattling Good Story for a Railway Journey

THE HOUSE OF CASSELL, LONDON, E.C.4

JULY, 1920.]

Note.—The trains during the night, from 6.30 p.m. to 5.55 a.m. are shown in dark figures, thus (12 43).

243

Marylebone and Paddington to High Wycombe, Princes Risboro', and Woodford and Hinton.

For Notes see p. 245.

Table with columns for 'Week Days' and 'Saturdays only'. Rows list stations from Marylebone to Woodford and Hinton, with numerical departure and arrival times. Includes special notes like 'To Leicester', 'To Manchester', and 'To Little Kimble'.

Pocket Reference Library.

DICTIONARY OF MUSICAL TERMS.

Of all Booksellers.

Cloth, 1s. 3d. net; full leather gilt, 1s. 9d. net.

CASSILL & COMPANY, LIMITED, LA BELLE SAUVAGE, LONDON, E.C.4

JULY, 1920.]

Note.—The Trains during the night, from 6 o p.m. to 5 59 a.m., are shown in *dark* figures, thus (12 45).

245

Woodford and Hinton, Princes Risboro', and High Wycombe to Paddington and Marylebone.

Week Days	M	MS	M	M	S	S	MS	MS	S	N	S	M	M
WOODFORD and HINTON dep.													
CULWORTH													
HELMOND													
BRACKLEY													
FINMERE													
CALVERT													
AKEMAN STREET													
WOTTON													
HADDENHAM (BUCKS.)													
PRINCES RISBORO' {arr. dep.}	1055 1058												
SAUNDEBTON													
WEST WYCOMBE {arr. dep.}	1115 1117												
HIGH WYCOMBE {dep.}	1170 1177												
BEACONSFIELD	1126												
SBER GREEN S.	1130												
GERRARDS CROSS	1136												
DENHAM (Golf Club Platform)	1140												
DENHAM (for Harefield)	1144 11 23												
RUISLIP AND ICKENHAM	1150												
NORTHOLT JUNCTION	1215												
SOUTH HARROW	1229												
SUDBURY	1232												
WEMBLEY HILL	1236												
PADDINGTON	1233												
MARYLEBONE	1248												

Week Days	M	N	S	M	M	S	MS	MS	S	N	S	M	M
WOODFORD and HINTON dep.													
CULWORTH													
HELMOND													
BRACKLEY													
FINMERE													
CALVERT													
AKEMAN STREET													
WOTTON													
HADDENHAM (BUCKS.)													
PRINCES RISBORO' {arr. dep.}	1055 1058												
SAUNDEBTON													
WEST WYCOMBE {arr. dep.}	1115 1117												
HIGH WYCOMBE {dep.}	1170 1177												
BEACONSFIELD	1126												
SBER GREEN S.	1130												
GERRARDS CROSS	1136												
DENHAM (Golf Club Platform)	1140												
DENHAM (for Harefield)	1144 11 23												
RUISLIP AND ICKENHAM	1150												
NORTHOLT JUNCTION	1215												
SOUTH HARROW	1229												
SUDBURY	1232												
WEMBLEY HILL	1236												
PADDINGTON	1233												
MARYLEBONE	1248												

Week Days	M	N	S	M	M	S	MS	MS	S	N	S	M	M
WOODFORD and HINTON dep.													
CULWORTH													
HELMOND													
BRACKLEY													
FINMERE													
CALVERT													
AKEMAN STREET													
WOTTON													
HADDENHAM (BUCKS.)													
PRINCES RISBORO' {arr. dep.}	1055 1058												
SAUNDEBTON													
WEST WYCOMBE {arr. dep.}	1115 1117												
HIGH WYCOMBE {dep.}	1170 1177												
BEACONSFIELD	1126												
SBER GREEN S.	1130												
GERRARDS CROSS	1136												
DENHAM (Golf Club Platform)	1140												
DENHAM (for Harefield)	1144 11 23												
RUISLIP AND ICKENHAM	1150												
NORTHOLT JUNCTION	1215												
SOUTH HARROW	1229												
SUDBURY	1232												
WEMBLEY HILL	1236												
PADDINGTON	1233												
MARYLEBONE	1248												

A Calls if required to set down. B Calls on Saturdays only when required to set down on notice to the Guard at Helmond. D Calls when required to set down on notice being given to the Guard at Calvert, or to take up on notice being given at the Station. F Calls on Saturdays only if required to set down Passengers from London. M Rail Motor Car. N One Class only. P Does not run on Saturdays. B Calls to set down from London on notice to the Guard at Marylebone. B Rufs on Saturdays only. Z Calls to set down on notice being given to the Guard at Paddington. C Bishop's Road Station. E Westbourne Park Station. f Arrival time by Slip Carriage. * Runs on Saturdays only. q Sudbury and Harrow Road. s Seer Green (for Beaconsfield Golf Links).

Makes the Journey Fly Faster
Cassell's Magazine of Fiction

All Bookstalls, 1/- net

Notes.—The Tables during the night, from 6 p.m. to 5 a.m., are shown in *small figures*, from 11 to 12.

[JULY, 1920.]

See also page 249 for other Trains to Kentish Town.

Midland.] Moorgate and St. Pancras to South Tottenham, Walthamstow, East Ham and Barking.		Kentish Town.		Notes.	
Week Days.	Dep.	Arr.	Week Days.	Dep.	Arr.
ST. PANCRAS	1227	2 35	MOORGATE	1227	6 7
ALDRSGATE	1228	4 15	ALDRSGATE	1228	8 17
FARRINGTON STREET	1229	5 0	FARRINGTON STREET	1229	9 22
KING'S CROSS †	1230	5 50	KING'S CROSS †	1230	10 27
CAMDEN ROAD	1231	6 48	CAMDEN ROAD	1231	11 25
KENTISH TOWN	1232	7 30	KENTISH TOWN	1232	12 10
HIGHGATE ROAD	1233	8 15	HIGHGATE ROAD	1233	1 0
JUNCTION ROAD	1234	9 0	JUNCTION ROAD	1234	1 45
UPPER HOLLOWAY	1235	9 45	UPPER HOLLOWAY	1235	2 0
HORNSEY ROAD	1236	10 30	HORNSEY ROAD	1236	2 45
CROUCH HILL	1237	11 15	CROUCH HILL	1237	3 30
HARRINGAY PK. (G.L.)	1238	12 0	HARRINGAY PK. (G.L.)	1238	4 15
ST. ANN'S ROAD	1239	12 45	ST. ANN'S ROAD	1239	5 0
SOUTH TOTTENHAM	1240	1 30	SOUTH TOTTENHAM	1240	5 45
BLACKHORSE ROAD	1241	2 15	BLACKHORSE ROAD	1241	6 30
WALTHAMSTOW	1242	3 0	WALTHAMSTOW	1242	7 15
LEYTON	1243	3 45	LEYTON	1243	8 0
LEYTONSTONE	1244	4 30	LEYTONSTONE	1244	8 45
WANSTEAD PARK	1245	5 15	WANSTEAD PARK	1245	9 30
WOODGRANGE PARK	1246	6 0	WOODGRANGE PARK	1246	10 15
EAST HAM	1247	6 45	EAST HAM	1247	11 0
BARKING	1248	7 30	BARKING	1248	11 45

Notes.
 † Does not run on Saturdays.
 ‡ Run on Saturdays only.
 § Change at Kentish Town.
 ¶ Change at Kentish Town, Leyton St.
 * Saturdays only.
 † Not on Saturdays.
 ‡ And St. Pancras.

London to High Barnet, Enfield, Hatfield, and Hitchin (continued).

For Notes see p. 257.

Table with columns for Week Days, station names (MOORGATE, Aldersgate, Farringdon, etc.), and numerical values representing train times.

Table with columns for Week Days, station names (MOORGATE, Aldersgate, Farringdon, etc.), and numerical values representing train times, continuing from the previous table.

JULY, 1920.]

Note.—The Trains during the night, from 6 o p.m. to 5 59 a.m. are shown in dark figures, thus (18 45)

London to High Barnet, Enfield, Hatfield, and Hitchin (continued).

Table with columns for stations (MOORGATE, Aldersgate, Farringdon, etc.) and rows for different train services (Sundays, KING'S CROSS, BROAD STREET, etc.). Includes a vertical section for 'Tuncheon Car Express to Leeds'.

Table with columns for stations (MOORGATE, Aldersgate, Farringdon, etc.) and rows for different train services (Sundays, KING'S CROSS, BROAD STREET, etc.).

Notes to pp. 250-255.

- A Calls at Knebworth when required about 5 15 to take up London Passengers.
B Calls at Wood Green on Saturdays only at 5.0.
C Passengers for Finsbury Park will NOT be conveyed by this Train.
D Passengers are NOT allowed to join this Train at Finsbury Park.
E Does not run on Saturdays.
F Calls at Crews Hill only to leave passengers.
G Saturdays only.
H Not on Saturdays.
I Passengers from these Stations change at Dalston Junction.
J King's Cross and St. Pancras.

JULY, 1920.]

Note.—The Trains during the night, from 8 o p.m. to 5 59 a.m. are shown in dark figures thus (13 45).

259

Hitchin, Hatfield, Enfield, and High Barnet to London (continued).

For Notes see p. 257.

Table with columns: Week Days, Hitchin, Hatfield, Enfield, High Barnet, London. Includes sub-sections like HITCHIN, STEVENAGE, KNEBWORTH, WELWYN, HATFIELD, POTTER'S BAR, HADLEY WOOD, NEW BARNET, OAKLEIGH PARK, etc.

Table with columns: Week Days, Hitchin, Hatfield, Enfield, High Barnet, London. Includes sub-sections like HITCHIN, STEVENAGE, KNEBWORTH, WELWYN, HATFIELD, POTTER'S BAR, HADLEY WOOD, NEW BARNET, OAKLEIGH PARK, etc.

JULY, 1920.]

Note.—The Trains during the night, from 6 p. m. to 5.59 a. m., are shown in dark figures, thus (12 45).

Hitchin, Hatfield, Enfield, and High Barnet to London (continued).

For Notes see p. 257.

Table for Hitchin, Hatfield, Enfield, and High Barnet to London (continued). Columns include station names (HITCHIN, HATFIELD, ENFIELD, HIGH BARNET, etc.) and time slots (N, S, N, S, N, S, etc.). Includes 'Week Days' and 'dep.'/arr.' markers.

Table for Hitchin, Hatfield, Enfield, and High Barnet to London (continued). Columns include station names (HITCHIN, HATFIELD, ENFIELD, HIGH BARNET, etc.) and time slots (N, S, N, S, N, S, etc.). Includes 'Week Days' and 'dep.'/arr.' markers.

Hitchin, Hatfield, Enfield, and High Barnet to London (continued).

For Notes see p. 257.

Table with columns for Week Days (N, S, N, S, N, S, N, S, N, S, N, S, N, S, N, S, N, S, N, S) and rows for stations including Hitchin, Hatfield, Enfield, and High Barnet. Includes notes like 'Not on Saturdays' and 'And Goff's Oak.'.

Table with columns for Week Days (N, S, N, S, N, S, N, S, N, S, N, S, N, S, N, S, N, S, N, S) and rows for stations including Hitchin, Hatfield, Enfield, and High Barnet. Includes notes like 'Not on Saturdays' and 'And Goff's Oak.'.

Hitchin, Hatfield, Enfield, and High Barnet to London (continued). For Notes see p. 257

Table of train schedules for Hitchin, Hatfield, Enfield, and High Barnet to London. Includes columns for station names, departure times, and arrival times. The table is organized into sections for different stations like Hitchin, Hatfield, Enfield, and High Barnet.

Table of train schedules for Hitchin, Hatfield, Enfield, and High Barnet to London. This section continues the schedule from the previous table, listing various stations and their corresponding train times.

Great Northern—Suburban.

266

For Colney Heath.

King's Cross to St. Albans.

[G. N. R.]

Week Days.	B	A	T										S																																																																																							
KING'S CROSS	7	45	7	45	9	20	1032	1130	11	10	11	12	13	14	15	16	17	18	19	20	21	22	23	24	25	26	27	28	29	30	31	32	33	34	35	36	37	38	39	40	41	42	43	44	45	46	47	48	49	50	51	52	53	54	55	56	57	58	59	60	61	62	63	64	65	66	67	68	69	70	71	72	73	74	75	76	77	78	79	80	81	82	83	84	85	86	87	88	89	90	91	92	93	94	95	96	97	98	99	100

**SUNDAY SERVICE
SUSPENDED.**

Week Days.	B	A	T										S																																																																																							
ST. ALBANS (N.W.)	7	45	7	45	9	20	1032	1130	11	10	11	12	13	14	15	16	17	18	19	20	21	22	23	24	25	26	27	28	29	30	31	32	33	34	35	36	37	38	39	40	41	42	43	44	45	46	47	48	49	50	51	52	53	54	55	56	57	58	59	60	61	62	63	64	65	66	67	68	69	70	71	72	73	74	75	76	77	78	79	80	81	82	83	84	85	86	87	88	89	90	91	92	93	94	95	96	97	98	99	100

**SUNDAY SERVICE
SUSPENDED.**

G. N. R.]

King's Cross to Hertford.

Week Days.	B	A	T										S																																																																																					
HATFIELD	8	23	9	20	1032	1130	11	10	11	12	13	14	15	16	17	18	19	20	21	22	23	24	25	26	27	28	29	30	31	32	33	34	35	36	37	38	39	40	41	42	43	44	45	46	47	48	49	50	51	52	53	54	55	56	57	58	59	60	61	62	63	64	65	66	67	68	69	70	71	72	73	74	75	76	77	78	79	80	81	82	83	84	85	86	87	88	89	90	91	92	93	94	95	96	97	98	99	100

Week Days.	B	A	T										S																																																																																							
HERTFORD	7	45	7	45	9	20	1032	1130	11	10	11	12	13	14	15	16	17	18	19	20	21	22	23	24	25	26	27	28	29	30	31	32	33	34	35	36	37	38	39	40	41	42	43	44	45	46	47	48	49	50	51	52	53	54	55	56	57	58	59	60	61	62	63	64	65	66	67	68	69	70	71	72	73	74	75	76	77	78	79	80	81	82	83	84	85	86	87	88	89	90	91	92	93	94	95	96	97	98	99	100

G. N. R.]

King's Cross to Luton and Dunstable.

N Not on Saturdays.
S Saturdays only.

Week Days.	B	A	T										S																																																																																					
HATFIELD	8	23	9	20	1032	1130	11	10	11	12	13	14	15	16	17	18	19	20	21	22	23	24	25	26	27	28	29	30	31	32	33	34	35	36	37	38	39	40	41	42	43	44	45	46	47	48	49	50	51	52	53	54	55	56	57	58	59	60	61	62	63	64	65	66	67	68	69	70	71	72	73	74	75	76	77	78	79	80	81	82	83	84	85	86	87	88	89	90	91	92	93	94	95	96	97	98	99	100

Week Days.	B	A	T										S																																																																																					
DUNSTABLE (L. & N.W.)	8	23	9	20	1032	1130	11	10	11	12	13	14	15	16	17	18	19	20	21	22	23	24	25	26	27	28	29	30	31	32	33	34	35	36	37	38	39	40	41	42	43	44	45	46	47	48	49	50	51	52	53	54	55	56	57	58	59	60	61	62	63	64	65	66	67	68	69	70	71	72	73	74	75	76	77	78	79	80	81	82	83	84	85	86	87	88	89	90	91	92	93	94	95	96	97	98	99	100

On Saturdays leaves Dunstable (L. & N.W.) at 7 42; Dunstable (G.N.) 7 46 and arrives Luton at 7 55.

G. N. R.]

Hitchin and Cambridge.

Week Days.	B	A	T										S																																																																																							
FINSBURY PARK	8	20	8	20	9	30	1032	1130	11	10	11	12	13	14	15	16	17	18	19	20	21	22	23	24	25	26	27	28	29	30	31	32	33	34	35	36	37	38	39	40	41	42	43	44	45	46	47	48	49	50	51	52	53	54	55	56	57	58	59	60	61	62	63	64	65	66	67	68	69	70	71	72	73	74	75	76	77	78	79	80	81	82	83	84	85	86	87	88	89	90	91	92	93	94	95	96	97	98	99	100

Week Days.	B	A	T										S																																																																																							
JAMBRIDGE	8	20	8	20	9	30	1032	1130	11	10	11	12	13	14	15	16	17	18	19	20	21	22	23	24	25	26	27	28	29	30	31	32	33	34	35	36	37	38	39	40	41	42	43	44	45	46	47	48	49	50	51	52	53	54	55	56	57	58	59	60	61	62	63	64	65	66	67	68	69	70	71	72	73	74	75	76	77	78	79	80	81	82	83	84	85	86	87	88	89	90	91	92	93	94	95	96	97	98	99	100

Sundays.

Sundays.

Week Days.	B	A	T										S																																																																																							
KING'S CROSS	8	50	8	50	9	15	1032	1130	11	10	11	12	13	14	15	16	17	18	19	20	21	22	23	24	25	26	27	28	29	30	31	32	33	34	35	36	37	38	39	40	41	42	43	44	45	46	47	48	49	50	51	52	53	54	55	56	57	58	59	60	61	62	63	64	65	66	67	68	69	70	71	72	73	74	75	76	77	78	79	80	81	82	83	84	85	86	87	88	89	90	91	92	93	94	95	96	97	98	99	100

A Commencing July 12th.
 B Will not run after July 10th.
 N Does not run on Saturdays.
 S Does not run on Tuesdays.
 T Runs on Tuesdays only.
 W Runs on Wednesdays only.

Great Eastern—Suburban.

268

Note.—The Trains during the night, from 6 p. m. to 5 59 a. m., are shown in *dark* figures; thus (12 45).

[JULY, 1920.

Liverpool St. & Fenchurch St. to Royal Albert Docks & Woolwich.

Week Days.		F	L	F	L	F	L	F	L	F	L	F	L	F	L
VICTORIA PARK .. dep.
STRATFORD (L.L.) .. arr.
LIVERPOOL STREET .. dep.	4 34	...	5 2	...	5 16	...	5 28	...	5 57	...	6 0	...	6 16	...	6 37
BISHOPSGATE .. "
BETHNAL GREEN .. "	4 38	...	5 6	...	5 20	...	5 32	...	6 1	...	6 4	...	6 22	...	6 41
GLOBE ROAD .. "
COBORN ROAD .. "	5 10	...	5 24	...	5 36	...	6 8	...	6 13	...	6 26	...	6 45
STRATFORD (Main) .. arr.	4 45	...	5 14	...	5 24	...	5 32	...	6 5	...	6 13	...	6 31	...	6 49
FENURCH STREET dep.	5 17	...	5 19	...	5 21	...	5 45	...	5 50	...	6 10	...	6 20
LEMAN STREET .. "	5 19	...	5 21	...	5 23	...	5 48	...	5 53	...	6 12	...	6 22
SHADWELL .. "	5 21	...	5 23	...	5 25	...	5 50	...	5 55	...	6 14	...	6 24
STEPNEY .. "	5 23	...	5 25	...	5 27	...	5 52	...	5 57	...	6 16	...	6 26
BURDETT ROAD .. "	5 25	...	5 27	...	5 29	...	5 54	...	5 59	...	6 18	...	6 28
BROMLEY .. "	5 27	...	5 29	...	5 31	...	5 56	...	6 01	...	6 20	...	6 30
BOW ROAD .. "	5 30	...	5 32	...	5 34	...	5 59	...	6 04	...	6 22	...	6 32
STRATFORD (Main) .. arr.	5 34	...	5 36	...	5 38	...	6 03	...	6 08	...	6 26	...	6 36
STRATFORD (L.L.) .. dep.	4 52	...	5 26	...	5 37	...	5 46	...	6 11	...	6 28	...	6 32	...	6 55
STRATFORD MARKET .. "	4 55	...	5 29	...	5 40	...	5 49	...	6 14	...	6 31	...	6 35	...	6 57
CANNING TOWN .. "	5 0	...	5 34	...	5 45	...	5 54	...	6 17	...	6 34	...	6 38	...	7 00
VICTORIA (TID. BASIN) .. "	5 05	...	5 39	...	5 50	...	5 59	...	6 20	...	6 37	...	6 41	...	7 03
DOCKS (CUS. HOUSE) .. "	5 15	...	5 49	...	6 00	...	6 09	...	6 22	...	6 39	...	6 43	...	7 05
SILVERTOWN .. "	5 20	...	5 54	...	6 05	...	6 14	...	6 27	...	6 44	...	6 48	...	7 10
NORTH WOOLWICH .. arr.	5 25	...	6 00	...	6 11	...	6 20	...	6 33	...	6 50	...	6 54	...	7 16
CUSTOM HOUSE dep.	6 03	...	6 14	...	6 23	...	6 36	...	6 53	...	6 57	...	7 19
CONNAUGHT RD. .. "	6 05	...	6 16	...	6 25	...	6 38	...	6 55	...	6 59	...	7 21
CENTRAL .. "	6 07	...	6 18	...	6 27	...	6 40	...	6 57	...	7 01	...	7 23
MANOR WAY .. "	6 09	...	6 20	...	6 29	...	6 42	...	7 00	...	7 04	...	7 26
GALLIONS .. arr.	6 11	...	6 22	...	6 31	...	6 44	...	7 02	...	7 06	...	7 28
CUSTOM HOUSE .. dep.	6 31	...	6 42	...	6 51	...	7 04	...	7 21	...	7 25	...	7 47
BECKTON .. arr.	6 37	...	6 48	...	6 57	...	7 10	...	7 27	...	7 31	...	7 53

JULY, 1920.]

Note.—The Trains during the night from 6 o p.m. to 5 59 a.m. are shown in *awk* figures, thus (12 45).

Liverpool St. & Fenchurch St. to Royal Albert Docks (Gallions) & Woolwich. [G.E.R.]

Table with columns for Week Days and stations: VICTORIA PARK, STRATFORD (L.L.), LIVERPOOL STREET, BISHOPSGATE, BETHNAL GREEN, GLOBE ROAD, COBORN ROAD, STRATFORD (Main), FENCHURCH STREET, LEMAN STREET, SHADWELL, STEPNEY, BURDETT ROAD, BROMLEY, BOW ROAD, STRATFORD (Main), STRATFORD (L.L.), STRATFORD MARKET, CANNING TOWN, VICTORIA (TID. BASIN), DOCKS (CUS. HOUSE), SILVERTOWN, NORTH WOOLWICH, CUSTOMHOUSE, CONNAUGHT RD., CENTRAL, MANOR WAY, GALLIONS, CUSTOM HOUSE, BECKTON.

Table with columns for Week Days and stations: VICTORIA PARK, STRATFORD (L.L.), LIVERPOOL STREET, BISHOPSGATE, BETHNAL GREEN, GLOBE ROAD, COBORN ROAD, STRATFORD (Main), FENCHURCH STREET, LEMAN STREET, SHADWELL, STEPNEY, BURDETT ROAD, BROMLEY, BOW ROAD, STRATFORD (Main), STRATFORD (L.L.), STRATFORD MARKET, CANNING TOWN, VICTORIA (TID. BASIN), DOCKS (CUS. HOUSE), SILVERTOWN, NORTH WOOLWICH, CUSTOMHOUSE, CONNAUGHT RD., CENTRAL, MANOR WAY, GALLIONS, CUSTOM HOUSE, BECKTON.

Table with columns for Week Days and stations: VICTORIA PARK, STRATFORD (L.L.), LIVERPOOL STREET, BISHOPSGATE, BETHNAL GREEN, GLOBE ROAD, COBORN ROAD, STRATFORD (Main), FENCHURCH STREET, LEMAN STREET, SHADWELL, STEPNEY, BURDETT ROAD, BROMLEY, BOW ROAD, STRATFORD (Main), STRATFORD (L.L.), STRATFORD MARKET, CANNING TOWN, VICTORIA (TID. BASIN), DOCKS (CUS. HOUSE), SILVERTOWN, NORTH WOOLWICH, CUSTOMHOUSE, CONNAUGHT RD., CENTRAL, MANOR WAY, GALLIONS, CUSTOM HOUSE, BECKTON.

JULY, 1920.]

Note.—The Trains during the night, from 6 p.m. to 5 59 a.m., are shown in dark figures, thus (12 45).

278

Woolwich & Royal Albert Docks (Gallions) to Fenchurch St. & Liverpool St.

For notes see p. 274.

Table with columns for Week Days, N, S, N, F, N, F, B, F, N, S, L, N, N, F, S, N, N, S, F, N, S, N, B. Rows include stations like BECKTON, GALLIONS, MANOR WAY, CENTRAL, CONNAUGHT R., CUSTOM HOUSE, NORTH WOOLWICH, SILVERTOWN, VICTORIA, DOCKS, CANNING TOWN, STRATFORD MKT., STRATFORD (L.L.), STRATFORD (Main), BOW ROAD, BROMLEY, BURDETT ROAD, STEPNEY, SHADWELL, LEMAN STREET, FENCHURCH ST., COBORN ROAD, GLOBE ROAD, BETHNAL GREEN, BISHOPSGATE, LIVERPOOL ST., STRATFORD (L.L.), VICTORIA PARK.

Table with columns for Weekdays, N, S, N, F, N, F, B, F, N, S, L, N, N, F, S, N, N, S, F, N, S, N, B. Rows include stations like BECKTON, GALLIONS, MANOR WAY, CENTRAL, CONNAUGHT R., CUSTOM HOUSE, NORTH WOOLWICH, SILVERTOWN, VICTORIA, DOCKS, CANNING TOWN, STRATFORD MKT., STRATFORD (L.L.), STRATFORD (Main), BOW ROAD, BROMLEY, BURDETT ROAD, STEPNEY, SHADWELL, LEMAN STREET, FENCHURCH ST., COBORN ROAD, GLOBE ROAD, BETHNAL GREEN, BISHOPSGATE, LIVERPOOL ST., STRATFORD (L.L.), VICTORIA PARK.

Table with columns for Sundays, N, S, N, F, N, F, B, F, N, S, L, N, N, F, S, N, N, S, F, N, S, N, B. Rows include stations like BECKTON, GALLIONS, MANOR WAY, CENTRAL, CONNAUGHT R., CUSTOM HOUSE, NORTH WOOLWICH, SILVERTOWN, VICTORIA, DOCKS, CANNING TOWN, STRATFORD MKT., STRATFORD (L.L.), STRATFORD (Main), BOW ROAD, BROMLEY, BURDETT ROAD, STEPNEY, SHADWELL, LEMAN STREET, FENCHURCH ST., COBORN ROAD, GLOBE ROAD, BETHNAL GREEN, BISHOPSGATE, LIVERPOOL ST., STRATFORD (L.L.), VICTORIA PARK.

Woolwich & Royal Albert Docks (Gallions) to Fenchurch St & Liverpool St.

Sundays.		F		F		F		F		F		F		F	
BECKTON	dep.
CUSTOM HOUSE	arr.
F. AL. REAL DOCKS	GALLIONS dep.
	MANOR WAY dep.
	CENTRAL " "
	CONNAUGHTR. CUSTOM HOUSE arr.
NORTH WOOLWICH	dep.	5 58	6 3	6 20	6 46
SILVERTOWN	...	6 1	6 6	6 23	6 49
VICTORIA (CUS. H.)	...	6 5	6 10	6 27	6 53
DOCKS (TID. B.)	...	6 9	6 14	6 31	6 57
CANNING TOWN	...	6 4	6 10	6 15	6 32
STRATFORD (MKT.)	...	6 10	6 15	6 20	6 37
STRATFORD (L.L.)	arr.	6 11	6 17
STRATF'D (Main)	dep.	6 55
BOW ROAD	6 25	6 59
EROMLEY
BURDETT ROAD	6 28	7 2
STEPNEY	6 31	7 5
SHADWELL
LEMAN STREET
FENCHURCH ST.	arr.	6 36	7 13
STRATFORD (Main)	dep.	6 28	...	7 3	7 10
COBORN ROAD	arr.	6 33	...	7 8	7 15
GLOBE ROAD
BETHNAL GREEN	...	6 37	...	7 12	7 19
BISHOPSGATE
LIVERPOOL ST.	...	6 41	...	7 15	7 22
STRATFORD (L.L.)	...	6 12
VICTORIA PARK	...	6 16

B These Trains run via Bromley.
 F Through Train to Fenchurch Street.
 L Through Train to Liverpool Street.
 N Does not run on Saturdays.
 S Runs on Saturdays only.
 † On Saturdays runs 10 minutes later.
 ‡ On Saturdays runs 4 minutes later.
 * Runs on Saturdays only.
 † Not on Saturdays.

Unless otherwise shown, passengers for Liverpool Street and stations Bow Road to Fenchurch St., inclusive change at Stratford.

The Free Ferry between North and South Woolwich is run at frequent intervals during the day and night, except between 12 0 and 5 0 on Week Days and between 12 0 on Sats. and 8 0 on Sun.

CASELL'S POPULAR SERIES

TEN NEW VOLUMES



- | | |
|-------------------------------------|-----------------------|
| THE TREE OF HEAVEN | MAY SINCLAIR |
| THE SPIDER'S EYE | WILLIAM LE QUEUX |
| MAGDALENE | E. S. STEVENS |
| THE LONG TRICK | "BARTIMEUS" |
| PAYMENT | OLIVE WADSLEY |
| THE ADVENTURES OF JIMMY DALE | FRANK L. PACKARD |
| THE EXPLOITS OF ARSÈNE LUPIN | MAURICE LEBLANC |
| THE KING'S WIDOW | MRS. BAILLIE REYNOLDS |
| THE LEAGUE OF THE SCARLET PIMPERNEL | BARONESS ORCZY |
| THE SOUL OF SUSAN YELLAM | H. A. VACHELL |

Table with columns for stations (Liverpool St., Bishopgate, Retinal Green, etc.) and rows for various services (Saturdays only, Not on Saturdays, etc.). Includes a section for 'To Woodford on Saturdays.' and '1st and 3rd Class only.' with numerical values.

Table with columns for stations (Liverpool St., Bishopgate, Retinal Green, etc.) and rows for various services (Saturdays only, Not on Saturdays, etc.). Includes a section for '1st and 3rd Class only.' and 'To Woodford.' with numerical values.

1s. NET

The NEW Magazine Now on Sale. Of all Booksellers

1s. NET

Great Eastern—Suburban 277

London to Barking, Ilford, Romford, and Chelmsford (continued).

Table with 24 columns and 15 rows. Columns represent various stations and services (e.g., Liverpool St., BishopsGate, Bethnal Green, Globe Road, Coborn Road, Fenchurch St., Leman Street, Shadwell, Stepney, Burdett Road, Bow Road, Stratford, Maryland Point, Forest Gate, Woodgrange Pk., Barking, Manor Park, Ilford, Seven Kings, Goodmayes, Chadwell Heath, Romford, Gidea Park, Harold Wood, Brentwood, Shenfield, Ingatestone, Chelmsford). Rows represent different services or routes, often with 'Not on' or 'Saturdays only' annotations. The rightmost column contains numerical values.

Notes and footnotes:
A Calls at Stratford to take up Passengers only.
B Passengers for Ilford are not conveyed by this train on Saturdays.
C Calls at Coborn Road at 2 7 to set down only.
K Calls at Shenfield at 9 17 to set down only.
L Does not run on Saturdays.
M Runs on Saturdays only.
N Except on Saturdays, calls at Ingatestone to set down passengers only.
P On Saturdays arrives at Chelmsford 6 28.
Q Calls to take up only.
R Saturdays only.
S Not on Saturdays.
T Gidea Park and Squirrel's Heath.
U Brentwood and Wsley.

CASSELL'S CLASSIFIED CATALOGUE ON RECEIPT OF POST CARD. Address: CASSELL & CO., LTD LA BELLE SAUVAGE - LONDON, E.C.4.

London to Barking, Ilford, Romford and Chelmsford. † Gidea Park and Squirrel's Heath. † Brentwood and Warley.

JULY, 1920.]

Note—The Trains during the night, from 6 0 p.m. to 5 9 a.m. are shown in 47% figures, thus (14 53).

Great Eastern—Suburban!

Station	4 20	7 53	8 20	8 29	8 36	9 10	9 15	9 25	10 14	10 18	10 40	11 5	11 18	11 48	12 18	12 42	1 0	1 28	2 0	2 18	2 42	3 20	3 40	3 48	4 15	4 20	4 48	5 18	
Sundays.																													
LIVERPOOL ST. dep.	4 20	7 53	8 20	8 29	8 36	9 10	9 15	9 25	10 14	10 18	10 40	11 5	11 18	11 48	12 18	12 42	1 0	1 28	2 0	2 18	2 42	3 20	3 40	3 48	4 15	4 20	4 48	5 18	
BISHOPSGATE	4 24	7 57	8 24	8 33	8 40	9 14	9 19	9 29	10 18	10 22	10 44	11 7	11 20	11 50	12 20	12 44	1 1	1 29	2 1	2 19	2 44	3 22	3 42	3 50	4 17	4 22	4 50	5 20	
BETHNAL GREEN																													
GLOBE ROAD																													
COBORN ROAD																													
FENCHURCH ST. dep.																													
LEMAN STREET																													
SHADWELL																													
STEPNEY																													
BURDETT ROAD																													
BOW ROAD																													
STRAITFORD																													
MARYLAND POINT																													
FOREST GATE																													
WOODGRANGE FK. †																													
BARKING - arr.																													
MANOR PARK - dep.																													
ILFORD																													
SEVEN KINGS																													
GOODMAYES																													
CHADWELL HEATH																													
ROMFORD																													
GIDEA PARK																													
HAROLD WOOD																													
BRENTWOOD																													
SHENFIELD																													
INGATSTONE																													
CHELMSFORD - arr.																													

POULTRY AND PROFIT
 By **WILLIAM W. BROOMHEAD**
 New Edition, 3s. net.

This book is written by Mr. Broomhead, Assistant Editor of "Poultry," Associate Editor "Illustrated Poultry Record," and a well-known Club Judge. It is done in a thoroughly modern and practical fashion, lightened up with helpful illustrations and likely to be a real aid to the poultry fancier who is out for profit

I Brentwood & Warley. J Gidea Park & Squirrels Heath. Chelmsford, Romford, Ilford, and Barking to London. For Notes see page 282.

Week Days	dep.	2	3	4	5	6	7	8	9	10	11	12	13	14	15	16	17	18	19	20	21	22	23	24	25	26	27	28	29	30	31	32	33	34	35	36	37	38	39	40	41	42	43	44	45	46	47	48	49	50	51	52	53	54	55	56	57	58	59	60	61	62	63	64	65	66	67	68	69	70	71	72	73	74	75	76	77	78	79	80	81	82	83	84	85	86	87	88	89	90	91	92	93	94	95	96	97	98	99	100	101	102	103	104	105	106	107	108	109	110	111	112	113	114	115	116	117	118	119	120	121	122	123	124	125	126	127	128	129	130	131	132	133	134	135	136	137	138	139	140	141	142	143	144	145	146	147	148	149	150	151	152	153	154	155	156	157	158	159	160	161	162	163	164	165	166	167	168	169	170	171	172	173	174	175	176	177	178	179	180	181	182	183	184	185	186	187	188	189	190	191	192	193	194	195	196	197	198	199	200
OHLMERFORD	dep.	2	3	4	5	6	7	8	9	10	11	12	13	14	15	16	17	18	19	20	21	22	23	24	25	26	27	28	29	30	31	32	33	34	35	36	37	38	39	40	41	42	43	44	45	46	47	48	49	50	51	52	53	54	55	56	57	58	59	60	61	62	63	64	65	66	67	68	69	70	71	72	73	74	75	76	77	78	79	80	81	82	83	84	85	86	87	88	89	90	91	92	93	94	95	96	97	98	99	100	101	102	103	104	105	106	107	108	109	110	111	112	113	114	115	116	117	118	119	120	121	122	123	124	125	126	127	128	129	130	131	132	133	134	135	136	137	138	139	140	141	142	143	144	145	146	147	148	149	150	151	152	153	154	155	156	157	158	159	160	161	162	163	164	165	166	167	168	169	170	171	172	173	174	175	176	177	178	179	180	181	182	183	184	185	186	187	188	189	190	191	192	193	194	195	196	197	198	199	200

LITTLE GARDENS: HOW TO MAKE THE MOST OF THEM

By H. H. THOMAS

Paper Covers, 1/6 net Of all Booksellers

CASSELL & COMPANY, LIMITED, LA BELLE SAUVAGE, E.C.4

Chelmsford, Romford, Ilford and Barking to London.

For Notes, see p. 232.

Table with columns for Week Days, Stations, and various train numbers and times. Includes rows for Chelmsford, Romford, Ilford, and Barking.

Table with columns for Week Days, Stations, and various train numbers and times. Includes rows for Gidea Park, Squirrels Heath, and other stations.

2/- NET

NET



THE KING'S WIDOW

By Mrs. Baillie Reynolds



At all Bookstalls

Great Eastern Suburban

Week Days.	ORLMSFORD dep.	INGATESTONE	SHENFIELD	BRENTWOOD J	HAROLD WOOD	GLIDE PARK I	ROMFORD	CHADWELL HTH	GOODMAYES	SEVEN KINGS	ILFORD	MANOR PARK	BARKING	WOODGRANCE PK	FOREST GATE	MARYLAND PNT	STRATFORD	BOW ROAD	BURDETT RD.	STEPNEY	SHADWELL	LEMAN ST	FENCHURCH ST. arr.	COBORN ROAD dep.	GLOBE ROAD	BETHNAL GREEN	BISHOPSGATE	LIVERPOOL ST. arr.	9 27	
	From Woodford	From Woodford	From Woodford	From Woodford	From Woodford	From Woodford	From Woodford	From Woodford	From Woodford	From Woodford	From Woodford	From Woodford	From Woodford	From Woodford	From Woodford	From Woodford	From Woodford	From Woodford	From Woodford	From Woodford	From Woodford	From Woodford	From Woodford	From Woodford	From Woodford	From Woodford	From Woodford	From Woodford	From Woodford	9 17
	10 10	10 15	10 20	10 25	10 30	10 35	10 40	10 45	10 50	10 55	11 00	11 05	11 10	11 15	11 20	11 25	11 30	11 35	11 40	11 45	11 50	11 55	12 00	12 05	12 10	12 15	12 20	12 25	12 30	9 36
	11 10	11 15	11 20	11 25	11 30	11 35	11 40	11 45	11 50	11 55	12 00	12 05	12 10	12 15	12 20	12 25	12 30	12 35	12 40	12 45	12 50	12 55	13 00	13 05	13 10	13 15	13 20	13 25	13 30	9 45
	12 10	12 15	12 20	12 25	12 30	12 35	12 40	12 45	12 50	12 55	13 00	13 05	13 10	13 15	13 20	13 25	13 30	13 35	13 40	13 45	13 50	13 55	14 00	14 05	14 10	14 15	14 20	14 25	14 30	9 54
	13 10	13 15	13 20	13 25	13 30	13 35	13 40	13 45	13 50	13 55	14 00	14 05	14 10	14 15	14 20	14 25	14 30	14 35	14 40	14 45	14 50	14 55	15 00	15 05	15 10	15 15	15 20	15 25	15 30	10 7

Week Days.	ORLMSFORD dep.	INGATESTONE	SHENFIELD	BRENTWOOD J	HAROLD WOOD	GLIDE PARK I	ROMFORD	CHADWELL HTH	GOODMAYES	SEVEN KINGS	ILFORD	MANOR PARK	BARKING	WOODGRANCE PK	FOREST GATE	MARYLAND POINT	STRATFORD	BOW ROAD	BURDETT ROAD.	STEPNEY	SHADWELL	LEMAN STREET	FENCHURCH ST. dep.	COBORN ROAD	GLOBE ROAD	BETHNAL GREEN	BISHOPSGATE	LIVERPOOL STREET arr.	10 7		
	From Woodford	From Woodford	From Woodford	From Woodford	From Woodford	From Woodford	From Woodford	From Woodford	From Woodford	From Woodford	From Woodford	From Woodford	From Woodford	From Woodford	From Woodford	From Woodford	From Woodford	From Woodford	From Woodford	From Woodford	From Woodford	From Woodford	From Woodford	From Woodford	From Woodford	From Woodford	From Woodford	From Woodford	From Woodford	From Woodford	10 16
	10 10	10 15	10 20	10 25	10 30	10 35	10 40	10 45	10 50	10 55	11 00	11 05	11 10	11 15	11 20	11 25	11 30	11 35	11 40	11 45	11 50	11 55	12 00	12 05	12 10	12 15	12 20	12 25	12 30	10 25	
	11 10	11 15	11 20	11 25	11 30	11 35	11 40	11 45	11 50	11 55	12 00	12 05	12 10	12 15	12 20	12 25	12 30	12 35	12 40	12 45	12 50	12 55	13 00	13 05	13 10	13 15	13 20	13 25	13 30	10 34	
	12 10	12 15	12 20	12 25	12 30	12 35	12 40	12 45	12 50	12 55	13 00	13 05	13 10	13 15	13 20	13 25	13 30	13 35	13 40	13 45	13 50	13 55	14 00	14 05	14 10	14 15	14 20	14 25	14 30	10 43	
	13 10	13 15	13 20	13 25	13 30	13 35	13 40	13 45	13 50	13 55	14 00	14 05	14 10	14 15	14 20	14 25	14 30	14 35	14 40	14 45	14 50	14 55	15 00	15 05	15 10	15 15	15 20	15 25	15 30	10 52	

THE EXPLOITS OF ARSÈNE LUPIN

BY MAURICE LEBLANC

At all Newsagents and **2/6** net Booksellers. Now Ready

M Calls at Stratford at 4.45 on Saturdays.
 N Does not run on Saturdays.
 S Runs on Saturdays only.
 & Arrives Brentwood 12.52
 * Calls to get down only. † Arrives Ingatestone 9.8.
 ‡ Arrives Glide Park 4.53.
 § Glide Park and Squirrels Heath. * Saturdays only.
 ¶ Brentwood and Waseley.

Chelmsford, Romford, Ilford and Barking to London.

JULY, 1920.]

Sundays ..	Chelmsford	Ingatesstone	Shenfield	Brentwood	Hakold Wood	Gidea Park	Romford	Chadwell Heath	Godmays	Seven Kings	Ilford	Manor Park	Barking	Woodgrange Park	Forest Gate	Maryland Point	Stratford	Bow Road	Burdett Road	Stepney	Shadwell	Leman Street	Fenchurch St.	Coborn Road	Globe Road	Bethnal Green	Bishopsgate	Liverpool Street																																					
1 58	2 9	3 15	4 22	5 29	6 36	7 43	8 50	9 57	10 4	11 11	12 18	1 25	2 32	3 39	4 46	5 53	6 59	7 59	8 59	9 59	10 59	11 59	12 59	1 59	2 59	3 59	4 59	5 59	6 59	7 59	8 59	9 59	10 59	11 59	12 59																														
2 17	3 24	4 31	5 38	6 45	7 52	8 59	10 6	11 13	12 20	1 27	2 34	3 41	4 48	5 55	6 55	7 55	8 55	9 55	10 55	11 55	12 55	1 55	2 55	3 55	4 55	5 55	6 55	7 55	8 55	9 55	10 55	11 55	12 55	1 55	2 55	3 55	4 55	5 55	6 55	7 55	8 55	9 55	10 55	11 55	12 55																				
3 26	4 33	5 40	6 47	7 54	9 1	10 8	11 15	12 22	1 29	2 36	3 43	4 50	5 57	6 57	7 57	8 57	9 57	10 57	11 57	12 57	1 57	2 57	3 57	4 57	5 57	6 57	7 57	8 57	9 57	10 57	11 57	12 57	1 57	2 57	3 57	4 57	5 57	6 57	7 57	8 57	9 57	10 57	11 57	12 57																					
4 35	5 42	6 49	7 56	9 3	10 10	11 17	12 24	1 31	2 38	3 45	4 52	5 59	6 59	7 59	8 59	9 59	10 59	11 59	12 59	1 59	2 59	3 59	4 59	5 59	6 59	7 59	8 59	9 59	10 59	11 59	12 59	1 59	2 59	3 59	4 59	5 59	6 59	7 59	8 59	9 59	10 59	11 59	12 59																						
5 44	6 51	8 58	10 5	11 12	12 19	1 26	2 33	3 40	4 47	5 54	7 1	8 8	9 8	10 8	11 8	12 8	1 8	2 8	3 8	4 8	5 8	6 8	7 8	8 8	9 8	10 8	11 8	12 8	1 8	2 8	3 8	4 8	5 8	6 8	7 8	8 8	9 8	10 8	11 8	12 8																									
6 53	8 60	10 67	12 74	1 81	2 88	3 95	4 102	5 109	6 116	7 123	8 130	9 137	10 137	11 137	12 137	1 137	2 137	3 137	4 137	5 137	6 137	7 137	8 137	9 137	10 137	11 137	12 137	1 137	2 137	3 137	4 137	5 137	6 137	7 137	8 137	9 137	10 137	11 137	12 137																										
8 0	9 7	11 14	13 21	15 28	17 35	19 42	21 49	23 56	25 63	27 70	29 77	31 84	33 84	35 84	37 84	39 84	41 84	43 84	45 84	47 84	49 84	51 84	53 84	55 84	57 84	59 84	61 84	63 84	65 84	67 84	69 84	71 84	73 84	75 84	77 84	79 84	81 84	83 84	85 84	87 84	89 84	91 84	93 84	95 84	97 84	99 84	101 84	103 84	105 84	107 84	109 84	111 84	113 84	115 84	117 84	119 84	121 84	123 84	125 84	127 84	129 84	131 84	133 84	135 84	137 84

* Calls to set down only. † Gidea Park and Squirrels Heath. ‡ Brentwood and Warley.

HOME HANDBOOKS

A Series of Useful Volumes for Every Household. Averaging from 200 to 300 pages each.

THE MAKING OF THE HOME
By MRS. S. A. BARNETT

VEGETARIAN COOKERY
By A. G. PAYNE

ETIQUETTE OF GOOD SOCIETY
Edited and Revised by LADY COLIN CAMPBELL

Paper Wrappers, net 1s. 6d. Of All Booksellers.

CASELL & COMPANY, LIMITED, LONDON, E.C.4.

Note—The Tables during the night, from 6 o'clk to 5 59 a.m. are shown in 20' & 40' degrees, thus (12 40).

Great Eastern—Suburban

Ilford and Woodford.

Table with columns for Week Days, Liverpool Street, Fenchurch Street, Stratford, and Ilford. Includes train numbers and times.

Table with columns for Week Days, Liverpool Street, Fenchurch Street, Stratford, and Ilford. Includes train numbers and times.

Table with columns for Week Days, Liverpool Street, Fenchurch Street, Stratford, and Ilford. Includes train numbers and times.

Table with columns for Week Days, Liverpool Street, Fenchurch Street, Stratford, and Ilford. Includes train numbers and times.

Table with columns for Sundays, Liverpool Street, Fenchurch Street, Stratford, and Ilford. Includes train numbers and times.

Unless otherwise shown passengers change at Woodford and Ilford.

Passengers should ascertain where (if at all) they may have to change carriages.

F Through Train from or to Fenchurch Street. L Through Train from or to Liverpool Street. N Does not run on Saturdays. S Runs on Saturdays only. a Arrives at Chigwell 7 46. b Arrives Chigwell at 6 52. c On Saturdays leaves Fenchurch Street at 7 49. d Arrives at Chigwell 9 7. e Arrives Chigwell at 4 7. f Arrives Chigwell at 4 5. g Arrives at Chigwell at 4 27. † Not on Saturdays.

London to Woodford, Loughton, Epping, and Ongar.

Sundays table with columns for various stations including LIVERPOOL ST. dep., BETHNAL GREEN, GLOBE ROAD, etc., and numerical values for each.

For Notes, see p. 285.

Week Days table with columns for various stations including ONGAR, BLAKE HALL, NORTH WEALD, etc., and numerical values. Includes 'Gais at Leman Street 7.35' and 'FROM HOVL.' annotations.

Week Days table with columns for various stations including ONGAR, BLAKE HALL, NORTH WEALD, etc., and numerical values. Includes 'FROM HOVL.' annotations.

Ongar to Epping, Loughton, Woodford, and London.

Week Days	L	N	N	L	N	L	N	L	N	L	N	L	N	L	N	L	N	L	N	L	N
ONGAR <i>dep.</i>	7	7	7	7	7	7	7	7	7	7	7	7	7	7	7	7	7	7	7	7	7
BLAKE HALL <i>arr.</i>	8	8	8	8	8	8	8	8	8	8	8	8	8	8	8	8	8	8	8	8	8
NORTH WEALED <i>arr.</i>	9	9	9	9	9	9	9	9	9	9	9	9	9	9	9	9	9	9	9	9	9
HEPPING <i>arr.</i>	10	10	10	10	10	10	10	10	10	10	10	10	10	10	10	10	10	10	10	10	10
THEYDON BOIS <i>arr.</i>	11	11	11	11	11	11	11	11	11	11	11	11	11	11	11	11	11	11	11	11	11
CHIGWELL LANE <i>arr.</i>	12	12	12	12	12	12	12	12	12	12	12	12	12	12	12	12	12	12	12	12	12
LOUGHTON <i>arr.</i>	13	13	13	13	13	13	13	13	13	13	13	13	13	13	13	13	13	13	13	13	13
BUCKHURST HILL <i>arr.</i>	14	14	14	14	14	14	14	14	14	14	14	14	14	14	14	14	14	14	14	14	14
WOODFORD T <i>arr.</i>	15	15	15	15	15	15	15	15	15	15	15	15	15	15	15	15	15	15	15	15	15
GEORGE LANE <i>arr.</i>	16	16	16	16	16	16	16	16	16	16	16	16	16	16	16	16	16	16	16	16	16
SNARES BROOK <i>arr.</i>	17	17	17	17	17	17	17	17	17	17	17	17	17	17	17	17	17	17	17	17	17
LEYTONSTONE <i>arr.</i>	18	18	18	18	18	18	18	18	18	18	18	18	18	18	18	18	18	18	18	18	18
LEYTON <i>arr.</i>	19	19	19	19	19	19	19	19	19	19	19	19	19	19	19	19	19	19	19	19	19
STRATFORD <i>arr.</i>	20	20	20	20	20	20	20	20	20	20	20	20	20	20	20	20	20	20	20	20	20
BOW ROAD <i>arr.</i>	21	21	21	21	21	21	21	21	21	21	21	21	21	21	21	21	21	21	21	21	21
BURDETT ROAD <i>arr.</i>	22	22	22	22	22	22	22	22	22	22	22	22	22	22	22	22	22	22	22	22	22
STENEY <i>arr.</i>	23	23	23	23	23	23	23	23	23	23	23	23	23	23	23	23	23	23	23	23	23
FENCHURCH ST <i>arr.</i>	24	24	24	24	24	24	24	24	24	24	24	24	24	24	24	24	24	24	24	24	24
COBORN ROAD <i>dep.</i>	25	25	25	25	25	25	25	25	25	25	25	25	25	25	25	25	25	25	25	25	25
GLOBE ROAD <i>dep.</i>	26	26	26	26	26	26	26	26	26	26	26	26	26	26	26	26	26	26	26	26	26
BETHNAL GREEN <i>arr.</i>	27	27	27	27	27	27	27	27	27	27	27	27	27	27	27	27	27	27	27	27	27
LIVERPOOL ST <i>arr.</i>	28	28	28	28	28	28	28	28	28	28	28	28	28	28	28	28	28	28	28	28	28

Sundays	L	N	N	L	N	L	N	L	N	L	N	L	N	L	N	L	N	L	N	L	N
ONGAR <i>dep.</i>	8	8	8	8	8	8	8	8	8	8	8	8	8	8	8	8	8	8	8	8	8
BLAKE HALL <i>arr.</i>	9	9	9	9	9	9	9	9	9	9	9	9	9	9	9	9	9	9	9	9	9
NORTH WEALED <i>arr.</i>	10	10	10	10	10	10	10	10	10	10	10	10	10	10	10	10	10	10	10	10	10
HEPPING <i>arr.</i>	11	11	11	11	11	11	11	11	11	11	11	11	11	11	11	11	11	11	11	11	11
THEYDON BOIS <i>arr.</i>	12	12	12	12	12	12	12	12	12	12	12	12	12	12	12	12	12	12	12	12	12
CHIGWELL LANE <i>arr.</i>	13	13	13	13	13	13	13	13	13	13	13	13	13	13	13	13	13	13	13	13	13
LOUGHTON <i>arr.</i>	14	14	14	14	14	14	14	14	14	14	14	14	14	14	14	14	14	14	14	14	14
BUCKHURST HILL <i>arr.</i>	15	15	15	15	15	15	15	15	15	15	15	15	15	15	15	15	15	15	15	15	15
WOODFORD T <i>arr.</i>	16	16	16	16	16	16	16	16	16	16	16	16	16	16	16	16	16	16	16	16	16
GEORGE LANE <i>arr.</i>	17	17	17	17	17	17	17	17	17	17	17	17	17	17	17	17	17	17	17	17	17
SNARES BROOK <i>arr.</i>	18	18	18	18	18	18	18	18	18	18	18	18	18	18	18	18	18	18	18	18	18
LEYTONSTONE <i>arr.</i>	19	19	19	19	19	19	19	19	19	19	19	19	19	19	19	19	19	19	19	19	19
LEYTON <i>arr.</i>	20	20	20	20	20	20	20	20	20	20	20	20	20	20	20	20	20	20	20	20	20
STRATFORD <i>arr.</i>	21	21	21	21	21	21	21	21	21	21	21	21	21	21	21	21	21	21	21	21	21
BOW ROAD <i>arr.</i>	22	22	22	22	22	22	22	22	22	22	22	22	22	22	22	22	22	22	22	22	22
BURDETT RD. <i>arr.</i>	23	23	23	23	23	23	23	23	23	23	23	23	23	23	23	23	23	23	23	23	23
STENEY <i>arr.</i>	24	24	24	24	24	24	24	24	24	24	24	24	24	24	24	24	24	24	24	24	24
FENCHURCH ST <i>arr.</i>	25	25	25	25	25	25	25	25	25	25	25	25	25	25	25	25	25	25	25	25	25
COBORN ROAD <i>dep.</i>	26	26	26	26	26	26	26	26	26	26	26	26	26	26	26	26	26	26	26	26	26
GLOBE ROAD <i>dep.</i>	27	27	27	27	27	27	27	27	27	27	27	27	27	27	27	27	27	27	27	27	27
BETHNAL GREEN <i>arr.</i>	28	28	28	28	28	28	28	28	28	28	28	28	28	28	28	28	28	28	28	28	28
LIVERPOOL ST <i>arr.</i>	29	29	29	29	29	29	29	29	29	29	29	29	29	29	29	29	29	29	29	29	29

Notes for Up Trains.

- 1 Arrives at Epping 7 1/2.
- 2 Arrives at Loughton 11 0.
- 3 Arrives at Epping 9 30.
- 4 Through Trains to Fenchurch Street.
- 5 Through Trains to Leafoot Street.
- 6 Runs on Saturdays only.
- 7 Not on Saturdays.
- 8 Globe Road and Devonish Street.
- 9 Woodford for Woodford Bridge.
- 10 Sharnbrook and Watstead.

CASSELL'S MAGAZINE OF FICTION

A Pleasant Companion on Your Journey

Of all Newsagents I/- net. and Bookstalls

Liverpool Street to Clapton, Walthamstow and Chingford.

Table with columns for Week Days and rows for Liverpool Street, Bishops Gate, Bethnal Green, Cambridge Heath, London Fields, Hackney Downs, Clapton, St. James' Street, Hoe Street, Wood Street, Highbury Park (Hale End), and Chingford.

Table with columns for Week Days and rows for Liverpool Street, Bishops Gate, Bethnal Green, Cambridge Heath, London Fields, Hackney Downs, Clapton, St. James' Street, Hoe Street, Wood Street, Highbury Park (Hale End), and Chingford.

Table with columns for Week Days and rows for Liverpool Street, Bishops Gate, Bethnal Green, Cambridge Heath, London Fields, Hackney Downs, Clapton, St. James' Street, Hoe Street, Wood Street, Highbury Park (Hale End), and Chingford.

Table with columns for Week Days and rows for Liverpool Street, Bishops Gate, Bethnal Green, Cambridge Heath, London Fields, Hackney Downs, Clapton, St. James' Street, Hoe Street, Wood Street, Highbury Park (Hale End), and Chingford.

WALTHAMSTOW. G. ERNEST CLARKE & Co., HOUSE, LAND, & ESTATE AGENTS, 225, 199, ROYAL SEEP.

N Does not run on Saturdays. S Runs on Saturdays only. V Second Class Passengers not conveyed by this train.

JULY, 1920.]

Note.—The Trains during the night, from 6 o.p.m., to 5.59 a.m. are shown in *dev's* figures, thus (12 45).

291

Liverpool Street to Palace Gates and Enfield Town.

N Does not run on Saturdays. S Runs on Saturdays only. *Saturdays only. † Does not run on Saturdays.

Table with columns for Week Days, Liverpool Street, Bishopsgate, Bethnal Green, Cambridge Heath, London Fields, Hackney Downs, Rectory Road, Stoke Newington, Stamford Hill, Seven Sisters, West Green, Noel Park (Wood Green), Palace Gates, Bruce Grove, White Hart Lane, Silver Street, Lower Edmonton, Bush Hill Park, Enfield Town. Includes times and service indicators.

Table with columns for Week Days, Liverpool Street, Bishopsgate, Bethnal Green, Cambridge Heath, London Fields, Hackney Downs, Rectory Road, Stoke Newington, Stamford Hill, Seven Sisters, West Green, Noel Park (Wood Green), Palace Gates, Bruce Grove, White Hart Lane, Silver Street, Lower Edmonton, Bush Hill Park, Enfield Town. Includes times and service indicators.

Table with columns for Week Days, Liverpool Street, Bishopsgate, Bethnal Green, Cambridge Heath, London Fields, Hackney Downs, Rectory Road, Stoke Newington, Stamford Hill, Seven Sisters, West Green, Noel Park (Wood Green), Palace Gates, Bruce Grove, White Hart Lane, Silver Street, Lower Edmonton, Bush Hill Park, Enfield Town. Includes times and service indicators.

Table with columns for Week Days, Liverpool Street, Bishopsgate, Bethnal Green, Cambridge Heath, London Fields, Hackney Downs, Rectory Road, Stoke Newington, Stamford Hill, Seven Sisters, West Green, Noel Park (Wood Green), Palace Gates, Bruce Grove, White Hart Lane, Silver Street, Lower Edmonton, Bush Hill Park, Enfield Town. Includes times and service indicators.

Table with columns for Week Days, Liverpool Street, Bishopsgate, Bethnal Green, Cambridge Heath, London Fields, Hackney Downs, Rectory Road, Stoke Newington, Stamford Hill, Seven Sisters, West Green, Noel Park (Wood Green), Palace Gates, Bruce Grove, White Hart Lane, Silver Street, Lower Edmonton, Bush Hill Park, Enfield Town. Includes times and service indicators.

Great Eastern—Suburban

292

Note.—The Trains during the night, from 6 o p.m. to 5 59 a.m., are shown in dark figures, thus (12 45).

[JULY, 1920.]

Liverpool Street to Palace Gates and Enfield Town.

N Does not run on Saturdays. S Runs on Saturdays only. † Silver Street and Upper Edmonton.

Table with columns for Week Days, Liverpool Street, Bishopsgate, Bethnal Green, Cambridge Heath, London Fields, Hackney Downs, Rectory Road, Stoke Newington, Stamford Hill, Seven Sisters, West Green, Noel Park (Wood Green), Palace Gates, Bruce Grove, White Hart Lane, Silver Street †, Lower Edmonton, Bush Hill Park, and Enfield Town. Rows show train numbers and times.

Table with columns for Week Days, Liverpool Street, Bishopsgate, Bethnal Green, Cambridge Heath, London Fields, Hackney Downs, Rectory Road, Stoke Newington, Stamford Hill, Seven Sisters, West Green, Noel Park (Wood Green), Palace Gates, Bruce Grove, White Hart Lane, Silver Street †, Lower Edmonton, Bush Hill Park, and Enfield Town. Rows show train numbers and times.

Table with columns for Sundays, Liverpool Street, Bishopsgate, Bethnal Green, Cambridge Heath, London Fields, Hackney Downs, Rectory Road, Stoke Newington, Stamford Hill, Seven Sisters, West Green, Noel Park (Wood Green), Palace Gates, Bruce Grove, White Hart Lane, Silver Street †, Lower Edmonton, Bush Hill Park, and Enfield Town. Rows show train numbers and times.

Table with columns for Sundays, Liverpool Street, Bishopsgate, Bethnal Green, Cambridge Heath, London Fields, Hackney Downs, Rectory Road, Stoke Newington, Stamford Hill, Seven Sisters, West Green, Noel Park (Wood Green), Palace Gates, Bruce Grove, White Hart Lane, Silver Street †, Lower Edmonton, Bush Hill Park, and Enfield Town. Rows show train numbers and times.

D Calls at the intermediate stations to set down Passengers only.

POCKET REFERENCE LIBRARY

CASSELL'S POCKET ENGLISH-FRENCH DICTIONARY. A DICTIONARY OF PROSE QUOTATIONS. By W. GURNEY BENHAM. A DICTIONARY OF POETICAL QUOTATIONS. By W. GURNEY BENHAM. WHEN WAS THAT? A Dictionary of Dates—Historical, Literary, Geographical. By L. H. DAWSON.

Cloth, 1s. 3d. net; j full leather gilt, 1s. 9d. net. Of All Booksellers.

CASSELL & COMPANY, LIMITED, LONDON, E.C.4.

JULY, 1920.]

Note.—The Trains during the night, from 6 0 p.m. to 5 59 a.m., are shown in dark figures, thus (12 45).

Enfield Town and Palace Gates to Liverpool Street.

For Notes see Page 294.

Table with columns for Week Days, Enfield Town, Bush Hill Park, Lower Edmonton, Silver Street, White Hart Lane, Bruce Grove, Palace Gates, Noel Park (Wood Green), West Green, Seven Sisters, Stamford Hill, Stoke Newington, Rectory Road, Hackney Downs, London Fields, Cambridge Heath, Bethnal Green, Bishopsgate, Liverpool Street. Includes train numbers and times.

Table with columns for Week Days, Enfield Town, Bush Hill Park, Lower Edmonton, Silver Street, White Hart Lane, Bruce Grove, Palace Gates, Noel Park (Wood Green), West Green, Seven Sisters, Stamford Hill, Stoke Newington, Rectory Road, Hackney Downs, London Fields, Cambridge Heath, Bethnal Green, Bishopsgate, Liverpool Street. Includes train numbers and times.

Table with columns for Week Days, Enfield Town, Bush Hill Park, Lower Edmonton, Silver Street, White Hart Lane, Bruce Grove, Palace Gates, Noel Park (Wood Green), West Green, Seven Sisters, Stamford Hill, Stoke Newington, Rectory Road, Hackney Downs, London Fields, Cambridge Heath, Bethnal Green, Bishopsgate, Liverpool Street. Includes train numbers and times.

Table with columns for Week Days, Enfield Town, Bush Hill Park, Lower Edmonton, Silver Street, White Hart Lane, Bruce Grove, Palace Gates, Noel Park (Wood Green), West Green, Seven Sisters, Stamford Hill, Stoke Newington, Rectory Road, Hackney Downs, London Fields, Cambridge Heath, Bethnal Green, Bishopsgate, Liverpool Street. Includes train numbers and times.

Table with columns for Week Days, Enfield Town, Bush Hill Park, Lower Edmonton, Silver Street, White Hart Lane, Bruce Grove, Palace Gates, Noel Park (Wood Green), West Green, Seven Sisters, Stamford Hill, Stoke Newington, Rectory Road, Hackney Downs, London Fields, Cambridge Heath, Bethnal Green, Bishopsgate, Liverpool Street. Includes train numbers and times.

JULY, 1920.]

Note.—The Trains during the night, from 6 o p.m. to 5 59 a.m., are shown in dark figures, thus (11 45).

London to Tottenham (Hale), Broxbourne, Buntingford, and Hertford.

For Notes see page 238.

Table with columns for stations and times. Rows include: Sundays, ST. PANCRAS dep., KENTISH TOWN, LIVERPOOL ST., BISHOPSGATE, BETHNAL GREEN, CAMBRIDGE HEATH, LONDON FIELDS, HACKNEY DOWNS, CLAPTON, GLOBE ROAD, COBORN ROAD, STRATFORD, LEA BRIDGE, TOTTENHAM (Hale), PARK, ANGEL ROAD, L. EDMONTON arr., PONDER'S END, BRIMSDOWN, ENFIELD LOCK, WALTHAM CROSS, CHESHUNT, BROXBORNE & f arr., HODDESDON, RYE HOUSE, ST. MARGARET'S arr., ST. MARGARET'S dep., MARDOCK, WIDFORD, HADHAM, STANDON, BRAUGHING, WEST MILL, BUNTINGFORD, ST. MARGARET'S dep., WARE, HERTFORD.

Table with columns for stations and times. Rows include: Week Days, HERTFORD, WARE, ST. MARGARET'S arr., BUNTINGFORD dep., WEST MILL, BRAUGHING, STANDON, HADHAM, WIDFORD, MARDOCK, ST. MARGARET'S dep., ST. MARGARET'S arr., RYE HOUSE, BROXBORNE & f arr., HODDESDON, CHESHUNT, WALTHAM CROSS, ENFIELD LOCK, BRIMSDOWN, PONDER'S END, L. EDMONTON dep., ANGEL ROAD, PARK, TOTTENHAM (Hale), LEA BRIDGE, STRATFORD, COBORN ROAD, GLOBE ROAD, CLAPTON, HACKNEY DOWNS, LONDON FIELDS, CAMBRIDGE HEATH, BETHNAL GREEN, BISHOPSGATE, LIVERPOOL ST. arr., KENTISH TOWN, ST. PANCRAS arr.

Buntingford Branch.

Table with columns for stations and times. Rows include: Week Days, LIVERPOOL STREET, TOTTENHAM, BROXBORNE, RYE HOUSE, ST. MARGARET'S, HERTFORD, WARE, ST. MARGARET'S, ST. MARGARET'S, MARDOCK, WIDFORD, HADHAM, STANDON, BRAUGHING, WEST MILL, BUNTINGFORD. Includes a 'Sundays' column and a note: 'N Does not run on Saturdays. B Runs on Saturdays only. S at 4 45 days leaves Tottenham on Fridays leaves Hertford 4 47. Ware 4 53; and arrives at St. Margaret's at 4 58. * Not Saturdays. + Saturdays only.'

JULY, 1920.]

Note.—The Trains during the night, from 6 o p.m. to 5 59 a.m. are shown in *dark* figures, thus (12 45).

Hertford, Buntingford, Broxbourne, and Tottenham (Hale) to London.

For Notes see page 298.

Week Days.		Sundays.	
HERTFORD	dep. 8 21	HERTFORD	dep. 8 4
WARE	8 45	WARE	8 10
ST. MARGARET'S arr.	9 31	ST. MARGARET'S arr.	8 14
BUNTINGFORD - dep.	1st and 3rd Class only.	BUNTINGFORD - dep.	1st and 3rd Class only.
WEST MILL	1st & 3rd Class only.	WEST MILL	1st & 3rd Class only.
BRAUGHING	1st & 3rd Class only.	BRAUGHING	1st & 3rd Class only.
STANDON	1st & 3rd Class only.	STANDON	1st & 3rd Class only.
HADHAM	1st & 3rd Class only.	HADHAM	1st & 3rd Class only.
WIDFORD	1st & 3rd Class only.	WIDFORD	1st & 3rd Class only.
MARDOCK	1st & 3rd Class only.	MARDOCK	1st & 3rd Class only.
ST. MARGARET'S arr.	1st & 3rd Class only.	ST. MARGARET'S arr.	1st & 3rd Class only.
ST. MARGARET'S dep.	9 32	ST. MARGARET'S dep.	8 20
RYE HOUSE	9 36	RYE HOUSE	8 24
BROXBOURNE & f arr.	9 40	BROXBOURNE & f arr.	8 28
HODDESDON	9 42	HODDESDON	8 32
CESHUNT	9 46	CESHUNT	8 36
WALTHAM CROSS ..	9 50	WALTHAM CROSS ..	8 40
ENFIELD LOCK 1- ..	9 54	ENFIELD LOCK 1- ..	8 44
BRIMSDOWN &	9 58	BRIMSDOWN &	8 48
PONDER'S END	10 02	PONDER'S END	8 52
L. EDMONTON .. dep.	10 04	L. EDMONTON .. dep.	8 56
ANGEL ROAD	10 09	ANGEL ROAD	9 01
PARK	10 12	PARK	9 04
TOTTENHAM (Hale)	10 15	TOTTENHAM (Hale)	9 07
LEA BRIDGE	10 19	LEA BRIDGE	9 11
STRATFORD	10 23	STRATFORD	9 15
COBORN ROAD	10 27	COBORN ROAD	9 19
GLOBE ROAD	10 31	GLOBE ROAD	9 23
CLAPTON	10 35	CLAPTON	9 27
HACKNEY DOWNS ..	10 39	HACKNEY DOWNS ..	9 31
LONDON FIELDS ..	10 43	LONDON FIELDS ..	9 35
CAMBRIDGE HEATH ..	10 47	CAMBRIDGE HEATH ..	9 39
BETHNAL GREEN ..	10 51	BETHNAL GREEN ..	9 43
BISHOPSGATE	10 55	BISHOPSGATE	9 47
LIVERPOOL ST. ... arr.	10 59	LIVERPOOL ST. ... arr.	9 51
KENTISH TOWN ..	11 03	KENTISH TOWN ..	9 55
ST. PANCRAS ... arr.	11 07	ST. PANCRAS ... arr.	9 59
A			
Sundays.			
HERTFORD	dep. 8 4	HERTFORD	dep. 8 10
WARE	8 10	WARE	8 16
ST. MARGARET'S arr.	8 14	ST. MARGARET'S arr.	8 20
BUNTINGFORD - dep.	1st and 3rd Class only.	BUNTINGFORD - dep.	1st and 3rd Class only.
WEST MILL	1st & 3rd Class only.	WEST MILL	1st & 3rd Class only.
BRAUGHING	1st & 3rd Class only.	BRAUGHING	1st & 3rd Class only.
STANDON	1st & 3rd Class only.	STANDON	1st & 3rd Class only.
HADHAM	1st & 3rd Class only.	HADHAM	1st & 3rd Class only.
WIDFORD	1st & 3rd Class only.	WIDFORD	1st & 3rd Class only.
MARDOCK	1st & 3rd Class only.	MARDOCK	1st & 3rd Class only.
ST. MARGARET'S arr.	1st & 3rd Class only.	ST. MARGARET'S arr.	1st & 3rd Class only.
ST. MARGARET'S dep.	8 20	ST. MARGARET'S dep.	8 28
RYE HOUSE	8 24	RYE HOUSE	8 32
BROXBOURNE & f arr.	8 28	BROXBOURNE & f arr.	8 36
HODDESDON	8 32	HODDESDON	8 40
CESHUNT	8 36	CESHUNT	8 44
WALTHAM CROSS ..	8 40	WALTHAM CROSS ..	8 48
ENFIELD LOCK 1- ..	8 44	ENFIELD LOCK 1- ..	8 52
BRIMSDOWN &	8 48	BRIMSDOWN &	8 56
PONDER'S END	8 52	PONDER'S END	9 00
L. EDMONTON .. dep.	8 56	L. EDMONTON .. dep.	9 04
ANGEL ROAD	9 01	ANGEL ROAD	9 09
PARK	9 04	PARK	9 12
TOTTENHAM (Hale)	9 07	TOTTENHAM (Hale)	9 15
LEA BRIDGE	9 11	LEA BRIDGE	9 19
STRATFORD	9 15	STRATFORD	9 23
COBORN ROAD	9 19	COBORN ROAD	9 27
GLOBE ROAD	9 23	GLOBE ROAD	9 31
CLAPTON	9 27	CLAPTON	9 35
HACKNEY DOWNS ..	9 31	HACKNEY DOWNS ..	9 39
LONDON FIELDS ..	9 35	LONDON FIELDS ..	9 43
CAMBRIDGE HEATH ..	9 39	CAMBRIDGE HEATH ..	9 47
BETHNAL GREEN ..	9 43	BETHNAL GREEN ..	9 51
BISHOPSGATE	9 47	BISHOPSGATE	9 55
LIVERPOOL ST. ... arr.	9 51	LIVERPOOL ST. ... arr.	9 59
KENTISH TOWN ..	9 55	KENTISH TOWN ..	10 03
ST. PANCRAS ... arr.	9 59	ST. PANCRAS ... arr.	10 07
A			

PAYMENT 2/-
By OLIVE WADSLEY net.

Cassell and Co., Ltd., La Belle Sauvage, London, E.C.4.

East London Railway. All Trains 1st and 3rd Class only.

A—EXCEPTING the following which are earlier at:—12 6, 12 26, 12 46 and 1 6 from Hammersmith

Table with columns for station names and train times. Includes stations like NEW CROSS, SURREY DOCKS, ROTHERHITHE, etc.

Table with columns for station names and train times. Includes stations like NEW CROSS, SURREY DOCKS, ROTHERHITHE, etc.

Table with columns for station names and train times. Includes stations like NEW CROSS, SURREY DOCKS, ROTHERHITHE, etc.

Table with columns for station names and train times. Includes stations like NEW CROSS, SURREY DOCKS, ROTHERHITHE, etc.

Table with columns for station names and train times. Includes stations like NEW CROSS, SURREY DOCKS, ROTHERHITHE, etc.

THE STORY-TELLER

Contains Short Stories written by high-class Authors

1/- Net. Of all Bookstalls.

CASSELL & COMPANY, LIMITED, LA BELLE SAUVAGE, LONDON, E.C.

Fenchurch Street and St. Pancras to Upminster, Tilbury, Southend-on-Sea, and Shoeburyness.

For Notes see p. 309.

Table with columns for Week Days, Fenchurch St., Stepney, Burdett Road, Ealing, Hammersmith, Earl's Court, S. Kensington, Victoria, Charing Cross, Temple, Blackfriars, Mansion House, Mark Lane, Aldgate East, Whitechapel, Stepney Green, Mile End, Bromley, West Ham, Plaistow, Upton Park, St. Pancras, Kentish Town, East Ham, Barking, Dagenham, Hornchurch, Upminster, East Horndon, Laidon, Dagenham Dock, Rainham, Purfleet, Grays, Tilbury Docks, Tilbury, Gravesend (Town Pier), Tilbury, Low Street, Stanford-Lb-Hope, Fittlea Junction, Benfleet, Leigh, Westcliff-on-Sea, Southend-on-Sea, Thorpe Bay, Shoeburyness. Includes arrival and departure times and train directions.

Table with columns for Sundays, Fenchurch St., Stepney, Burdett Road, Ealing, Hammersmith, Earl's Court, S. Kensington, Victoria, Charing Cross, Temple, Blackfriars, Mansion House, Mark Lane, Aldgate East, Whitechapel, Stepney Green, Mile End, Bromley, West Ham, Plaistow, Upton Park, St. Pancras, Kentish Town, East Ham, Barking, Dagenham, Hornchurch, Upminster, East Horndon, Laidon, Dagenham Dock, Rainham, Purfleet, Grays, Tilbury Docks, Tilbury, Gravesend (Town Pier), Tilbury, Low Street, Stanford-Lb-Hope, Fittlea Junction, Benfleet, Leigh, Westcliff-on-Sea, Southend-on-Sea, Thorpe Bay, Shoeburyness. Includes arrival and departure times and train directions.

Fenchurch Street and St. Paneras to Upminster, Tilbury, Southend-on-Sea and Shoeburyness.

Note.—Numerous electric trains run between Bromley and East Ham throughout the day—Week Days and Sundays.

Table of train schedules including stations such as Fenchurch St., Stepney, Burdett Road, Barking, Dagenham, Upminster, and Tilbury. It lists departure and arrival times for various lines and services.

Note.—Passengers from District Line can alight at Mark Lane for Fenchurch Street Station for NON-STOP Trains from that Station to Leigh-on-Sea, Westcliff-on-Sea, Southend-on-Sea, &c.

Romford and Ockendon Branch.

N Does not run on Saturdays. S Runs on Saturdays only.

Table of train schedules for the Romford and Ockendon Branch, detailing services for Week Days, Sundays, and specific routes like Romford to Ockendon.

Cassell's Health Handbooks

Healthy Brain and Healthy Body. Health Culture for Busy Men. Health Habits and How to Train Them. Health for the Young.

Each volume contains numerous illustrations.

Cloth 1/6 net each.

Of all Booksellers.

CASSELL & COMPANY, LIMITED, LA BELLE SAUVAGE, LONDON, E.C.4

Shoeburyness, Southend-on-Sea, Tilbury, and Upminster to St. Pancras and Fenchurch Street.

For Notes see page 309.

Week Days.	1010	1015	1020	1025	1030	1035	1040	1045	1050	1100	1105	1110	1115	1120	1125	1130	1135	1140	1145	1150	1155	1160	1165	1170	1175	1180	1185	1190	1195	1200	1205	1210	1215	1220	1225	1230	1235	1240	1245	1250	1255	1260	1265	1270	1275	1280	1285	1290	1295	1300	1305	1310	1315	1320	1325	1330	1335	1340	1345	1350	1355	1360	1365	1370	1375	1380	1385	1390	1395	1400	1405	1410	1415	1420	1425	1430	1435	1440	1445	1450	1455	1460	1465	1470	1475	1480	1485	1490	1495	1500	1505	1510	1515	1520	1525	1530	1535	1540	1545	1550	1555	1560	1565	1570	1575	1580	1585	1590	1595	1600	1605	1610	1615	1620	1625	1630	1635	1640	1645	1650	1655	1660	1665	1670	1675	1680	1685	1690	1695	1700	1705	1710	1715	1720	1725	1730	1735	1740	1745	1750	1755	1760	1765	1770	1775	1780	1785	1790	1795	1800	1805	1810	1815	1820	1825	1830	1835	1840	1845	1850	1855	1860	1865	1870	1875	1880	1885	1890	1895	1900	1905	1910	1915	1920	1925	1930	1935	1940	1945	1950	1955	1960	1965	1970	1975	1980	1985	1990	1995	2000
SHOEBURYNESS—dep.	1010	1015	1020	1025	1030	1035	1040	1045	1050	1100	1105	1110	1115	1120	1125	1130	1135	1140	1145	1150	1155	1160	1165	1170	1175	1180	1185	1190	1195	1200	1205	1210	1215	1220	1225	1230	1235	1240	1245	1250	1255	1260	1265	1270	1275	1280	1285	1290	1295	1300	1305	1310	1315	1320	1325	1330	1335	1340	1345	1350	1355	1360	1365	1370	1375	1380	1385	1390	1395	1400	1405	1410	1415	1420	1425	1430	1435	1440	1445	1450	1455	1460	1465	1470	1475	1480	1485	1490	1495	1500	1505	1510	1515	1520	1525	1530	1535	1540	1545	1550	1555	1560	1565	1570	1575	1580	1585	1590	1595	1600	1605	1610	1615	1620	1625	1630	1635	1640	1645	1650	1655	1660	1665	1670	1675	1680	1685	1690	1695	1700	1705	1710	1715	1720	1725	1730	1735	1740	1745	1750	1755	1760	1765	1770	1775	1780	1785	1790	1795	1800	1805	1810	1815	1820	1825	1830	1835	1840	1845	1850	1855	1860	1865	1870	1875	1880	1885	1890	1895	1900	1905	1910	1915	1920	1925	1930	1935	1940	1945	1950	1955	1960	1965	1970	1975	1980	1985	1990	1995	2000

Week Days.	1010	1015	1020	1025	1030	1035	1040	1045	1050	1100	1105	1110	1115	1120	1125	1130	1135	1140	1145	1150	1155	1160	1165	1170	1175	1180	1185	1190	1195	1200	1205	1210	1215	1220	1225	1230	1235	1240	1245	1250	1255	1260	1265	1270	1275	1280	1285	1290	1295	1300	1305	1310	1315	1320	1325	1330	1335	1340	1345	1350	1355	1360	1365	1370	1375	1380	1385	1390	1395	1400	1405	1410	1415	1420	1425	1430	1435	1440	1445	1450	1455	1460	1465	1470	1475	1480	1485	1490	1495	1500	1505	1510	1515	1520	1525	1530	1535	1540	1545	1550	1555	1560	1565	1570	1575	1580	1585	1590	1595	1600	1605	1610	1615	1620	1625	1630	1635	1640	1645	1650	1655	1660	1665	1670	1675	1680	1685	1690	1695	1700	1705	1710	1715	1720	1725	1730	1735	1740	1745	1750	1755	1760	1765	1770	1775	1780	1785	1790	1795	1800	1805	1810	1815	1820	1825	1830	1835	1840	1845	1850	1855	1860	1865	1870	1875	1880	1885	1890	1895	1900	1905	1910	1915	1920	1925	1930	1935	1940	1945	1950	1955	1960	1965	1970	1975	1980	1985	1990	1995	2000
SHOEBURYNESS—dep.	1010	1015	1020	1025	1030	1035	1040	1045	1050	1100	1105	1110	1115	1120	1125	1130	1135	1140	1145	1150	1155	1160	1165	1170	1175	1180	1185	1190	1195	1200	1205	1210	1215	1220	1225	1230	1235	1240	1245	1250	1255	1260	1265	1270	1275	1280	1285	1290	1295	1300	1305	1310	1315	1320	1325	1330	1335	1340	1345	1350	1355	1360	1365	1370	1375	1380	1385	1390	1395	1400	1405	1410	1415	1420	1425	1430	1435	1440	1445	1450	1455	1460	1465	1470	1475	1480	1485	1490	1495	1500	1505	1510	1515	1520	1525	1530	1535	1540	1545	1550	1555	1560	1565	1570	1575	1580	1585	1590	1595	1600	1605	1610	1615	1620	1625	1630	1635	1640	1645	1650	1655	1660	1665	1670	1675	1680	1685	1690	1695	1700	1705	1710	1715	1720	1725	1730	1735	1740	1745	1750	1755	1760	1765	1770	1775	1780	1785	1790	1795	1800	1805	1810	1815	1820	1825	1830	1835	1840	1845	1850	1855	1860	1865	1870	1875	1880	1885	1890	1895	1900	1905	1910	1915	1920	1925	1930	1935	1940	1945	1950	1955	1960	1965	1970	1975	1980	1985	1990	1995	2000

Midland (London, Tilbury and Southend)—Suburban

308 Shoeburyness, Southend-on-Sea, Tilbury, & Upminster to St. Pancras and Fenchurch Street.
For notes see page 309.

Station	Week Days	Sundays	Notes
SHOEBURYNESS dep.	55 0 0	8 0 0	
THORPE BAY	7 7 14	8 18 5	
SOUTHEND-ON-SEA	10 14 19	21 26 31	
WESTCLIFF-ON-SEA	14 19 24	25 30 35	
LEIGH	17 22 27	28 33 38	
BENFLEET	19 24 29	30 35 40	
PITSEA JUNCTION	21 26 31	32 37 42	
STANFORD-LB-HOPE	23 28 33	34 39 44	
LOW STREET	25 30 35	36 41 46	
TILBURY	27 32 37	38 43 48	
GRAVESEND (Town Pier)	29 34 39	40 45 50	
TILBURY	31 36 41	42 47 52	
TILBURY DOCKS	33 38 43	44 49 54	
GRAYS	35 40 45	46 51 56	
FURFLEET	37 42 47	48 53 58	
RAINHAM	39 44 49	50 55 60	
DAGENHAM DOCKARY	41 46 51	52 57 62	
LAINDON	43 48 53	54 59 64	
EAST HORNDON	45 50 55	56 61 66	
UPMINSTER	47 52 57	58 63 68	
FENCHURCH ST.	49 54 59	60 65 70	
DAGENHAM	51 56 61	62 67 72	
BARKING	53 58 63	64 69 74	
EAST HAM	55 60 65	66 71 76	
KENTISH TOWN	57 62 67	68 73 78	
ST. PANCRAS	59 64 69	70 75 80	
UPTON PARK	61 66 71	72 77 82	
PLAISTOW	63 68 73	74 79 84	
WEST HAM	65 70 75	76 81 86	
BROMLEY	67 72 77	78 83 88	
MILE END	69 74 79	80 85 90	
STEPNEY GREEN	71 76 81	82 87 92	
WHITECHAPL	73 78 83	84 89 94	
ALDGATE EAST	75 80 85	86 91 96	
MARK LANE	77 82 87	88 93 98	
MANSION HOUSE	79 84 89	90 95 100	
BLACKFRIARS	81 86 91	92 97 102	
TEMPLE	83 88 93	94 99 104	
CHARING CROSS	85 90 95	96 101 106	
VICTORIA	87 92 97	98 103 108	
S. KENSINGTON	89 94 99	100 105 110	
EARL'S COURT	91 96 101	102 107 112	
HAMMERSMITH	93 98 103	104 109 114	
EALING	95 100 105	106 111 116	
BURDETT ROAD	97 102 107	108 113 118	
STEPNEY	99 104 109	110 115 120	
FENCHURCH ST.	101 106 111	112 117 122	

Shoeburyness, Southend-on-Sea, Tilbury, and Upminster to
St. Pancras and Fenchurch Street.

309

NOTE—Numerous electric trains run throughout the day between East Ham and Bromley—Week Days and Sundays.

Notes to pp. 302-309.
 † Does not run on Saturdays. ‡ Runs on Saturdays only. § Saturdays only. † Not on Saturdays.

Sundays.		† Does not run on Saturdays.		‡ Runs on Saturdays only.		§ Saturdays only.		† Not on Saturdays.	
SHOEBURYNESS—dep.	7 18	7 22	7 27	7 35	7 49	7 53	8 0	8 15	8 29
THORPE BAY " "	7 22	7 27	7 32	7 40	7 54	8 0	8 15	8 30	8 44
SOUTHEND-ON-SEA " "	7 27	7 32	7 37	7 45	8 0	8 15	8 30	8 45	9 0
WESTCLIFF-ON-SEA " "	7 32	7 37	7 42	7 50	8 15	8 30	8 45	9 0	9 15
LEIGH " "	7 37	7 42	7 47	8 0	8 30	8 45	9 0	9 15	9 30
BENFLEET " "	7 42	7 47	7 52	8 15	8 45	9 0	9 15	9 30	9 45
PITSEA JUNCTION " "	7 47	7 52	7 57	8 30	9 0	9 15	9 30	9 45	10 0
STANFORD-LE-HOPE " "	7 52	7 57	8 0	8 45	9 15	9 30	9 45	10 0	10 15
LOW STREET " "	7 57	8 0	8 5	9 0	9 30	9 45	10 0	10 15	10 30
TILBURY " "	8 0	8 5	9 0	9 30	10 0	10 15	10 30	10 45	11 0
GRAVESEND—arr. (Town Pier)	7 25	7 30	7 35	7 45	8 0	8 15	8 30	8 45	9 0
TILBURY " dep.	7 37	7 42	7 47	7 57	8 15	8 30	8 45	9 0	9 15
TILBURY DOCKS " "	7 40	7 45	7 50	8 0	8 30	8 45	9 0	9 15	9 30
GRAYS " "	7 45	7 50	7 55	8 15	8 45	9 0	9 15	9 30	9 45
PURFLEET " "	7 50	7 55	8 0	8 30	9 0	9 15	9 30	9 45	10 0
RAINHAM " "	7 55	8 0	8 5	8 45	9 15	9 30	9 45	10 0	10 15
DAGENHAM DOCK arr.	8 0	8 5	9 0	9 0	9 30	9 45	10 0	10 15	10 30
LAINDON " dep.	8 0	8 5	9 0	9 0	9 30	9 45	10 0	10 15	10 30
EAST HORNDON " dep.	8 1	8 6	8 11	8 15	8 45	9 0	9 15	9 30	9 45
UPMINSTER " arr.	7 59	8 4	8 9	8 20	8 50	9 0	9 15	9 30	9 45
HORNCHURCH " dep.	8 1	8 6	8 11	8 15	8 45	9 0	9 15	9 30	9 45
DAGENHAM " "	8 11	8 16	8 21	8 25	8 55	9 0	9 15	9 30	9 45
BARKING " "	8 11	8 16	8 21	8 25	8 55	9 0	9 15	9 30	9 45
EAST HAM " "	8 12	8 17	8 22	8 26	8 56	9 0	9 15	9 30	9 45
KENTISH TOWN " arr. ST. PANCRAS	9 12	9 17	9 22	9 26	9 56	10 0	10 15	10 30	10 45
UPTON PARK " dep.	9 18	9 23	9 28	9 32	10 0	10 15	10 30	10 45	11 0
PLAISTOW " "	9 18	9 23	9 28	9 32	10 0	10 15	10 30	10 45	11 0
WEST HAM " "	9 18	9 23	9 28	9 32	10 0	10 15	10 30	10 45	11 0
BROMLEY " "	9 18	9 23	9 28	9 32	10 0	10 15	10 30	10 45	11 0
MILE END " arr.	9 18	9 23	9 28	9 32	10 0	10 15	10 30	10 45	11 0
STEPNEY GREEN " "	9 18	9 23	9 28	9 32	10 0	10 15	10 30	10 45	11 0
WHITECHAPEL " "	9 18	9 23	9 28	9 32	10 0	10 15	10 30	10 45	11 0
ALDGATE EAST " "	9 18	9 23	9 28	9 32	10 0	10 15	10 30	10 45	11 0
MARK LANE " "	9 18	9 23	9 28	9 32	10 0	10 15	10 30	10 45	11 0
MANSION HOUSE " "	9 18	9 23	9 28	9 32	10 0	10 15	10 30	10 45	11 0
BLACKFRIARS " "	9 18	9 23	9 28	9 32	10 0	10 15	10 30	10 45	11 0
TEMPLE " "	9 18	9 23	9 28	9 32	10 0	10 15	10 30	10 45	11 0
CHARING CROSS " "	9 18	9 23	9 28	9 32	10 0	10 15	10 30	10 45	11 0
VICTORIA " "	9 18	9 23	9 28	9 32	10 0	10 15	10 30	10 45	11 0
S. KENSINGTON " "	9 18	9 23	9 28	9 32	10 0	10 15	10 30	10 45	11 0
EARL'S COURT " "	9 18	9 23	9 28	9 32	10 0	10 15	10 30	10 45	11 0
HAMMERSMITH " "	9 18	9 23	9 28	9 32	10 0	10 15	10 30	10 45	11 0
EALING " "	9 18	9 23	9 28	9 32	10 0	10 15	10 30	10 45	11 0
BURDETT ROAD " dep.	8 44	8 49	8 54	9 0	9 30	9 45	10 0	10 15	10 30
STEPNEY " "	8 47	8 52	8 57	9 0	9 30	9 45	10 0	10 15	10 30
FENCHURCH ST " arr.	8 52	8 57	9 0	9 0	9 30	9 45	10 0	10 15	10 30

MORNING STAR

By H. RIDER HAGGARD

2/- net

Of all Booksellers and Bookstalls

THE HOUSE OF CASSELL, LONDON, E.C.4

For the best advice on all gardening matters, read

POPULAR GARDENING

Every week this journal contains practical illustrated articles on topical garden matters, up-to-date articles, and useful hints

Published every Friday, 2d.

Cassell & Co. Ltd., London, E.C.4