

NOTICE.

The Summer Services shown herein for the London and North Western, North Staffordshire, Great Eastern, Great Western, and London and South Western Railway Companies do not begin until the 11th July. Passengers are therefore recommended to consult the June Tables for services prior to that date.

The new...
an every...

THE SWAN OPEN PEN

Sold by Stationers everywhere.

NOTE.—Trains during the night, from 6.0 p.m. to 6.59 a.m., are shown in DARK figures, thus (12 45).

57TH Year.

CASSELL'S

No. 676.

See p. 229
£500
INSURANCE COUPON

1/6
NET

Containing a LIST of HOTELS and BOARDING HOUSES.

Time Tables JULY, 1920

Also of HOUSE AGENTS and REMOVERS in the London and Country Districts.

A.B.C. Arrangement, combining also TRAIN SERVICES.

BOOK IN ADVANCE
for
All Lines of Steamers
Also Overseas Travel.

VOUCHERS EXCHANGED FREE.

SEWELL & CROWTHER,

87, BISHOPSGATE, City, E.C.
Telephone, Wail 2828.

11, Onslow Pl., S. Kensington, S.W.
Telephone, Kensington 689.

Issued by all Railways
dated in advance.

Freight & Goods Collected,
Shipped, Forwarded
and Insured

TO ALL PARTS OF THE WORLD.

BELTS, TRUSSES.
94 Page Catalogue Free.

EVERYTHING FOR SICK NURSING.

ELASTIC STOCKINGS
for Varicose & Enlarged Veins.

"VARIX," all about Elastic Stockings, how to wear, clean, and repair them, post free.

W. H. BAILEY & SON,
38, OXFORD STREET,
LONDON, W.

IMPERIAL HOTEL, RUSSELL SQUARE, LONDON
Postal Portion—Frost Turkish Baths in the World. Orchestra Daily in Winter Garden. 1000 Rooms. Room & Table d'Hotel Breakfast.

NEITHER SCRATCH NOR SPURT.
Attention is also drawn to the New Patent Anti-Blotting Pen.

C. BRANDAUER & CO. LTD. CIRCULAR PRINTED PENS

SEVEN PRIZE MEDALS.
Wholesale Warehouse:
124, Newgate Street, E.C.
WORKS, BIRMINGHAM.

'S STORES, LTD., FOR COMPLETE OUTFITS
See Pages H1, H2, H3.

VICTORY BONDS

Purchased now will not be available for the payment of Death Duties for their full face value until six months have elapsed.

THE VICTORY BOND POLICIES

ISSUED BY THE

NATIONAL PROVIDENT INSTITUTION

Provide for the payment of the full amount of the face value of the Bond from the date of issue.

Particulars post free on application to 48 GRACECHURCH STREET, E.C.3.
Telephone 1773 Avenue.



IN SPRINKLER-TOP
CANISTERS

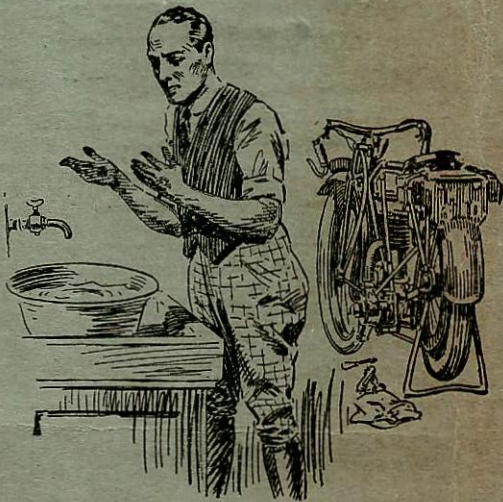
Of all Grocers, Stores, Oilmen,
Chandlers, etc.

“Come and help Father!”

FATHER has been busy overhauling his motor-cycle, and his hands look as if they would never come clean again. This is just where “My Vimmy” proves invaluable, for with his assistance all the dirt is speedily removed, leaving the hands clean without making the skin red and rough.

In the household also Vim lightens the work of the housewife considerably. It cleans and polishes everything that needs cleaning and polishing. It quickly removes dirt and gives a brilliant and lasting shine to all kinds of Metals.

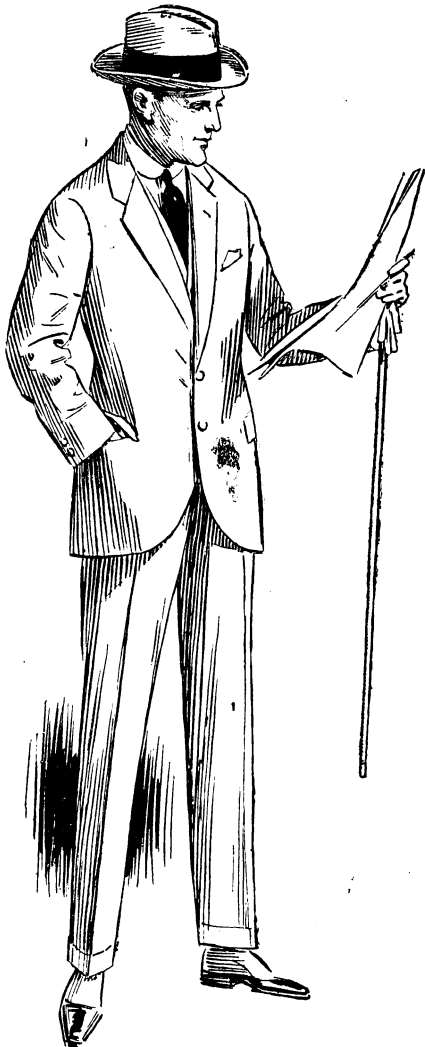
VIM is splendid for removing dirt, however ingrained, from the hands. It also cleans and polishes Pots, Pans, Cutlery and Crockery, Glassware and Earthenware, Windows, Oilcloth and Linoleum, Floors, and Kitchen Tables, plain and painted Woodwork, etc. Don't apply the VIM dry.



GENTLEMEN'S SUITS

CHAS. BAKER & CO. hold the Largest Stock in London of
GENTLEMEN'S SUITS and OVERCOATS

Ready for Immediate Wear—and being Actual Manufacturers,
are supplying the Best Value Obtainable.



Having anticipated the present shortage of supplies CHAS. BAKER & CO. offer an unusually large selection of

Clothing, Hosiery & Boots

and draw special attention to their extensive stock of **SUITINGS**, both in the Made-up Garment and the Bespoke Departments.

Bespoke Departments

are open at each Branch.

Only the most experienced Cutters and Tailors employed.

THE HOUSE WITH FORTY YEARS' REPUTATION.

Chas. Baker & Co.'s
STORES, LTD.

Head Depot and Letter Order Dept.:
271 to 274 HIGH HOLBORN, W.C.1.

41 and 43 Ludgate Hill, E.C.4.
137 to 140 Tottenham Court Rd., W.1.

256 Edgware Road, W.2.

27 to 33 King St., Hammersmith, W.6.

5 to 9 Seven Sisters Road, N.7.

Croydon Branch:
Whitgift House, North End.

CHAS. BAKER & CO'S

Head Depot, Export, and Letter Order Dept.

STORES, LTD.

271 to 274 HIGH HOLBORN, W.C.1.

City Branch:

41 and 43 LUDGATE HILL, E.C.4.

West End Branches:

137 to 140 TOTTENHAM COURT ROAD,
W.1.

256 EDWARE ROAD, W.2.

27 to 33 KING STREET, HAMMERSMITH,
W.6.

Northern Branch:

5 to 9 SEVEN SISTERS ROAD,
HOLLOWAY, N.7.

Croydon Branch:

WHITGIFT HOUSE, 38 and 40 NORTH
END.

We hold the Largest and Best selection in London of Boys' and Youths' School Clothing, and being the actual manufacturers offer the best value obtainable.

Special School Outfit Catalogue Post Free on Application.

SCHOOL OUTFITS.

ETON
HARROW
RUGBY
WINCHESTER
CHARTERHOUSE
HAILEYBURY
CHELTENHAM
MALVERN

ST. NEOTS
MARLBOROUGH
WELLINGTON
ST. PETERS
SHREWSBURY
CLIFTON
BEDFORD

&c.



CHAS. BAKER & CO. LTD.

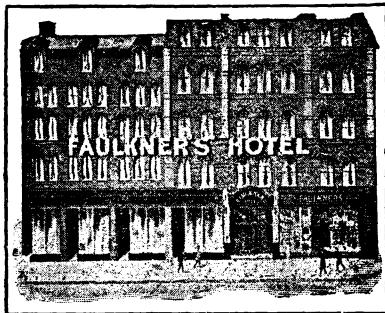
BOYS' SUMMER CLOTHING.



SPECIAL NOTICE.—Owing to shortage of Supplies CHAS. BAKER & CO. recommend early purchases of **CLOTHING, HOSIERY and BOOTS.**

FAULKNER'S HOTELS.

LONDON & BRIGHTON.



FAULKNER'S HOTEL
VILLIERS STREET STRAND
 ALONGSIDE CHARING CROSS STATION. **LONDON.**

BED, BREAKFAST, BATH,
and ATTENDANCE from 7/6

LUNCHEON, 12.30 to 2.30.
DINNER, 6.30 to 8.0.
BILLIARD ROOM.

TELEGRAMS: "NEIGHBORLY, LONDON."
 'PHONES: { 3051 GERRARD,
 3439 REGENT.



ARLINGTON PRIVATE
HOTEL.
MARINE PARADE.
BRIGHTON.

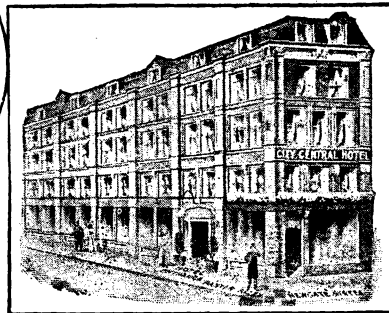
OVERLOOKING SEA, PALACE PIER & AQUARIUM

Moderate Inclusive Terms.
 Apply **MANAGERESS.**

TELEGRAMS: "OZONE, BRIGHTON."
 'PHONE: 6983 KEMP TOWN.

SPECIALITIES.

LIBERAL TABLE. EXCELLENT COOKING.
HOME COMFORTS. SEPARATE TABLES.
 :: **SEA VIEW FROM ALL WINDOWS** ::
 :: **TRAMS DIRECT FROM STATION** ::



CITY CENTRAL HOTEL,
NEWGATE ST & PANYER ALLEY
LONDON.:

BED, BREAKFAST, BATH,
and ATTENDANCE from 6/6

LUNCHEON, 12.30 to 2.30.

TELEGRAMS: "COMFORTABLE, LONDON."
 'PHONES: { 5319 CENTRAL,
 6904 CITY.

LONDON**LONDON.**

Self-contained Suite of Rooms, with Hotel Service
for two or more persons; in best part of West End,
near principal Theatres and Shops

HOTEL CRANBOURN,

67a, Shaftesbury Avenue, W.1.

Double Bedroom, Drawing, Bath, Hall, and Tele-
phone, including Breakfast, from £1:7:0 per
day; or with Lunch, Dinner, or Supper also, served
in Apartment, from £2:2:0.

WEEKLY TERMS ARRANGED.

Telephone: 2212 Gerrard.

LONDON

THREE CENTRAL HOTELS—ONE MINUTE FROM CHARING CROSS STATION.

THE
BUCKINGHAM HOTEL,

28, Buckingham Street, STRAND.

Room, Attendance, **10/6**
Bath and Breakfast

THE
TERMINUS HOTEL,

3 & 4, Adelaide Street, STRAND.

Room, Attendance, **7/6**
Bath and Breakfast

THE
MARION HOTEL,

9, 10, 11, Agar Street, STRAND.

Room, Attendance, **6/6**
Bath and Breakfast

LONDON

Telephone—
Avenue
4745

WATTAM'S TEMPERANCE
7 and 8, ALDGATE HIGH STREET, CITY.
Within 4 minutes' walk of Fenchurch Street and Liverpool Street Stations.

Bed and Breakfast

from **6/6**

MOST CENTRAL AND COMFORTABLE.

HOTEL

LONDON.**TRAFALGAR HOTEL**

(Adjoining Charing Cross S.E.R. Station)

37, CRAVEN STREET, STRAND, W.C.2.

FIRST-CLASS FAMILY HOTEL. Best Central Position in London. Electric Light throughout. Within easy
access of the Theatres and Principal Amusements. MODERATE TERMS. PROPRIETOR.

BOGNOR.

ROCK GARDENS HOTEL. Beautifully situated. Facing Sea. Close to West End Bandstand. Two Dining Rooms. Separate Tables. Lounge. Smoking Room. Garage. Cars for Hire.

Telephone: "Bognor 25."

N. M. E. PULLIN, Proprietress.

Telegrams: "Gardens, Bognor."

BOURNEMOUTH**BOURNEMOUTH.****WIMBLEDON HALL**

EAST CLIFF (within easy walking distance of Central Station).

Magnificent Situation Among the Pines. Four Minutes Sea.

BILLIARDS (full size).

ENTERTAINMENTS.

HOUSE WELL WARMED.

OWN VEGETABLE AND POULTRY FARM AT BRANSGORE, NEW FOREST.

Thoroughly Comfortable Board-Residence from 9/- per day.

Fine Lounge.

Dining Hall (seats 110); Separate Tables.

Illustrated Tariff free.

Tel.: 886.

BRIGHTON**BRIGHTON.****THE OLD SHIP HOTEL**

An Old-Established Family Hotel, situated on the Sea Front, where visitors can obtain

**COMFORTABLE ROOMS and
GOOD ENGLISH COOKING**

At Moderate Charges.

TELEPHONE: 4680 BRIGHTON.

TELEGRAMS: "OLD SHIP, BRIGHTON."

R. BACON & CO., LTD., Proprietors.

ILFRACOMBE.

THE COLLINGWOOD, ILFRACOMBE.

Smoking Room. 120 Bedrooms. Hot and Cold Baths.
Terms moderate. Electric Lift. Electric Light throughout.

Central. First-Class. Old Established. Close to and facing Sea. Spacious Dining and Drawing Rooms. Table d'Hôte, Separate Tables. Billiards (Table by Burroughes and Watts). Garage with Pit. Address—PROPRIETOR.

LOWESTOFT.

LOWESTOFT.

GRAND HOTEL.

Magnificent Position on Private Cliff.

300 FEET SEA FRONTAGE.

Standing in well-wooded Grounds and Lawns. Near Links.

NOTED CHEFS. . . NEW BALLROOM.

SPECIAL WINTER TERMS.

Fully Equipped Garage to overhaul Cars of any make.

RESIDENT ENGINEERS.

'Phone: 190 Lowestoft.

MARGATE.

GLIFTONVILLE

Old Established
and
High-Class.

DALKEITH

Ideally situated on Queen's Promenade.

COMMANDING ABSOLUTELY UNINTERRUPTED SEA VIEW.
REPLETE WITH EVERY COMFORT.

Telegrams: "Stoddart, Margate."

THE MISSES STODDART.

MARGATE (continued)

Splendidly Situated near the Sea and Downs.

MAPLE DINING AND SLEEPING ACCOMMODATION FOR 200 GUESTS.

NORTHDOWN HALL, CLIFTONVILLE.

FIRST-CLASS PRIVATE HOTEL,

**FAMOUS FOR ITS
CATERING AND SERVICE**

SPECIAL FEATURES.

- | | |
|---|---|
| <ol style="list-style-type: none"> 1. All Meat guaranteed best English. 2. Milk, Eggs, and Poultry direct from the Farms. 3. Superior and most liberal catering. 4. Redecorated; handsomely furnished throughout. 5. Moderate and inclusive tariff. 6. Billiard Table (Free). | <ol style="list-style-type: none"> 7. Spacious and Comfortable Smoking Room. 8. New Veranda 70 ft. long, opening on Lawn. 9. Handsome New Lounge, 60 ft. long. 10. Over 100 Bedrooms, 8 Bathrooms (hot and cold). 11. Double Drawing Room. 12. Large Recreation Room, 50 ft. long, opening on New Veranda, 50 ft. long. |
|---|---|

Winter Arrangements.

NORTHDOWN HALL is open all the year round.

N.B.—Northdown Hall has never been without Visitors for 10 years, and is the recognised Winter Hotel in Cliftonville and Margate.

ELECTRIC LIGHT THROUGHOUT.

THE CATERING IS ON A MOST LIBERAL SCALE.

Reduced Terms from October until Easter. *Chef and good Staff always kept.*

Apply to W. STOCK, B.A. (Univ. of Lond.), Proprietor.

Telephone: 166 MARGATE.

Telegrams: "NORTHDOWN HALL, MARGATE."

QUEEN'S HIGHCLIFFE AND **THE GRAND**

THE PREMIER AND BEST HOTELS IN CLIFTONVILLE.

Unique positions directly facing the Sea and Principal Promenades.

THOROUGHLY UP-TO-DATE. CHOICE CUISINE AND CELLARS.
MAGNIFICENT BALLROOMS AND CAFÉ.
CINDERELLAS AND DANCE TEAS THROUGHOUT THE YEAR.

FIRST-CLASS ORCHESTRAS AT EACH HOTEL.

Billiards, Tennis, Croquet, etc.

For Illustrated Tariffs apply to the respective Managers.

QUEEN'S { Telephone, 586 (five lines).
HIGHCLIFFE { Telegrams, "OZONE."

GRAND { Telephone, 63.
HOTEL { Telegrams, "GRAND."

MARGATE (continued)**MARGATE.****WHITE HART HOTEL**

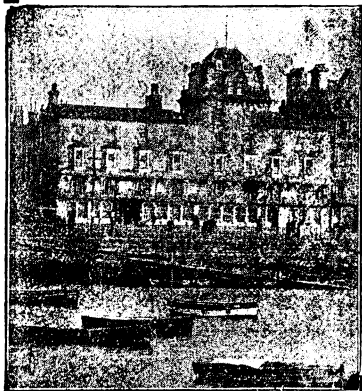
The position of this Hotel is unique. It is thoroughly sheltered from the North-East and East Winds. Noted for its comfortable surroundings. Quite close to the New Concert Pavilion.

MOST PICTURESQUE OUTLOOK IN MARGATE.

HANDSOME OAK DINING ROOM & LOUNGE.

HOTEL FACES THE SEA.

Famed for Comfort and Excellent Cuisine.



A MOST COMFORTABLE HOTEL.

Pleasant Private Sitting Rooms:

Electric Light throughout.

POINTS TO BE NOTED.

NO EAST WIND. ALL PRODUCE FROM OUR OWN FARM AND KITCHEN GARDENS. KENT BUTTER AND EGGS. FRESH FISH CONTINUALLY DURING DAY. LARGE CELLAR OF WINES AT REASONABLE PRICES. MODERATE INCLUSIVE TERMS.

R.A.C., A.A., A.C.U.

Telegrams: "White Hart."

Telephone: 44 Margate.

Address: DIRECTOR.

CLIFTONVILLE, MARGATE.**SURREY COURT HOTEL,**

EDGAR ROAD.

Telegraphic Address: "Invigorating, Margate."

Telephone No. 195.

CENTRALLY SITUATED.

Half minute from Esplanade. Beautifully Furnished and Decorated.

ACCOMMODATION FOR 130 GUESTS.

Electric Light throughout. Lounge. Billiards. Recreation Room.

EXCELLENT CUISINE. GARAGE.

Prospectus on application.

MARGATE (continued)**MARGATE, CLIFTONVILLE.****FORT PARAGON HOTEL.***Central. Convenient. Comfortable.***OLD-ESTABLISHED FIRST-CLASS HOTEL.***Redecorated and Refurnished.***Premier Position in Cliftonville. Immediately on the Front.***Grand New Dining Room overlooking Sea.***Fully Licensed. Excellent Cuisine. Choice Wines.***Accommodation 150 Guests.**Telephone: 521.**Telegrams: "COAST, MARGATE."**Tariff, apply MANAGERESS.**Managing Director, W. STOCK, B.A.Lond.***MATLOCK.****SMEDLEY'S HYDRO,**
Matlock, Derbyshire.

ONE OF THE LARGEST AND MOST COMPLETE IN THE KINGDOM. EXTENSIVELY PATRONISED ALL THE YEAR ROUND BY PLEASURE-SEEKERS AS WELL AS THOSE REQUIRING HYDROPATHIC TREATMENT. DAILY AVERAGE OF VISITORS IN RESIDENCE OVER 240.

*Unrivalled Suite of Hydropathic Baths,
including up-to-date Electrical Appliances.*

— CONSULTING AND RESIDENT PHYSICIANS. —

Illustrated Prospectus on application to—

H. CHALLAND, Managing Director.

Matlock Golf Links, 18 Holes, 15 minutes' walk.

RAMSGATE

ROYAL HOTEL

This old-established Hotel has recently undergone extensive alterations, and has been redecorated throughout.

Sanitation remodelled on latest principles.
New Bathrooms.

ELECTRIC LIGHT.

Close to Station. S.E. & C. Railway.

Facing Harbour, Channel, and Downs.

First-class Cuisine.
MODERATE TARIFF.

Under the Direction of
ARTHUR HOWITT.

And at

**ROYAL FOREST HOTEL,
CHINGFORD**

(In the heart of Epping Forest),

GREEN'S HOTEL, HASTINGS,
and

"THE CASTLE," RICHMOND.

Table d'Hôte.

Boarders en pension.

**GOOD FISHING AND GOLF
LINKS IN DISTRICT.**

Telephone : 286.

SOUTHPORT.

HOTELS & BOARDING ESTABLISHMENTS.

"WHERE TO STAY."

SOUTHPORT'S PREMIER HYDRO.

HESKETH PARK HYDRO,

IDEAL POSITION.

Ltd.

Excellent Cuisine. Lift. Lounge.
Near Golf Links.

Baths of every description—
Turkish, Russian, Electric Light, etc.

Telephone : 1355.

Telegrams : "ROCKLEY."

Illustrated tariff on application.

**KENWORTHY'S
HYDROPATHIC.**

Phone : 80.

Telegrams : "KENWORTHY'S."

Visitors or Patients.

Tariff from Manageress.

BADEN HOUSE,

46, PROMENADE, SOUTHPORT.

For Comfortable Apartments.

With good attendance and cooking.

Moderate charges.

Apply—Mrs. Sucksmith.

THE MIDLANDS ENGINEERING AND ALLIED TRADES

Advertised in these pages of Cassell's Time Tables will prove a great help to those busy reconstructing their plant for the forthcoming Trade Boom.

WIREWORKERS, WEAVERS, FENDER & FIREGUARD MAKERS.

RIDDLES, SIEVES, BUILDERS' SCREENS,

Wirework for Horticultural, Domestic and Manufacturing Purposes.

Price Lists on application.

F. L. and E. SMALL,
72, MOSELEY STREET, BIRMINGHAM.

Folding Boxes

FOR ALL TRADES.

J. W. GILL, PEOPLE'S HALL
WORKS,
LOVEDAY ST., BIRMINGHAM.

HERBERT W. PERIAM, Ltd.,

Floodgate Street Works,
BIRMINGHAM.

TELEGRAPHIC ADDRESS—

"Floodgate, Birmingham."

TELEPHONE—

Central 595 & 596
(2 Lines).

Over
250,000 gross
in stock.



STONE & CO.,

Aluminium Ware Specialists.

Saucepans, Steamers, Frypans, Kettles, Tumblers,
Jardinières, Fish Slicers, Plate Covers, Porrhers,
Ladles, Skimmers, Serviette Rings, Hat
and Coat, Wardrobe and Moulding Hooks,
Letter Plates, Tray Handles, Figures, &c.,

DELIVERED FROM STOCK.

**46 & 47, UPPER DEAN STREET,
BIRMINGHAM.**

THE BRITISH GLASS ENGINEERING CO.,

B. G. E. Co.

**ALLIANCE WORKS,
87, CECIL STREET, NEWTOWN ROW,
BIRMINGHAM.**

Specialities.

BOTTLE WORKS.

Machine Moulds.
Hand Operated Moulds.
Open and Shut Moulds.
Trap Moulds.
Foot Operated Moulds.
Stopper Press Moulds.
Presses.
Special Detachable Blowing Irons.
Gathering Irons for Machines.
Finishing Neck Tools.
Finishing Punty Irons.
Marvering Tables.
Marvering Spoons (Aluminium
and Iron).
Lehr Pans.
Sheet Metal Work, etc., etc.

FLINT HOUSES.

Globe Moulds.
Shade Moulds.
Press Moulds.
Stopper Moulds.
Presses.
Special Blowing Irons.
Cutting Down Tools.
Gadjetts.
Automatic Boys (Foot Operated).
Mould Dipping Machines (Power
Operated).
Machinery.
Mechanical Appliances.
Etc., Etc.

**Plant and Machinery made to your own rough sketches
or designed for your requirements.**

"The bells are ringing for me and my gal."

So Buy Sensible Wedding Presents.

My useful crate of **HOUSEHOLD UTENSILS** comprises
the following articles :—

- | | |
|--------------------------------|------------------------|
| 1 Copper-bottom Kettle | 1 Aluminium Frying Pan |
| 1 Iron Kettle | 1 Enamel Colander |
| 1 Iron Saucepan | 1 Enamel Bowl |
| 1 set of 3 Aluminium Saucepans | 1 set Meat Tins |

Delivered free in the United Kingdom on receipt of remittance.

Nett Cash £2 5s.

Satisfaction guaranteed.

A. DALBY,

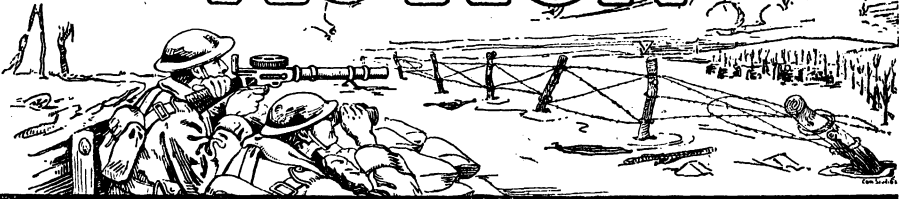
MAIL ORDER HARDWARE SPECIALIST,

**61, MASON ROAD, ERDINGTON,
BIRMINGHAM.**

TELEPHONE
CENTRAL. 5977.

ACTION

BRANCH OFFICE
COVENTRY



IS NECESSARY TO BRING YOUR BUSINESS TO THE FRONT. THIS
IS DONE BY ADVERTISING UNDER OUR UP-TO-DATE METHODS OF
ILLUSTRATING, DESIGNING, ETC., IN WOOD, LINE AND HALF-TONE

THE COMMERCIAL STUDIOS

Catalogue
Illustrators

**41, CHURCH STREET
BIRMINGHAM**

Advertising
Advisors

ROUGH DESIGNS SENT FOR APPROVAL

THE VICTORIA OXY-ACETYLENE WELDING AND CUTTING CO.

(Proprietor—JAMES ROGERS.)

Quick Repairs to Broken Machinery and
Motor Cylinders.

BOILER WELDING AND CUTTING.

SPECIALITY :

Oxy-Acetylene Welding of Aluminium Castings for
Aero and Motor Work and other quick Repetition
Orders by thoroughly experienced Workmen.

**74, CAMBRIDGE STREET,
BIRMINGHAM.**

THE RIGHT PRICE FOR THE RIGHT QUANTITY.

METAL SMALLWARES TURNED from the BAR.
STAMPED or PRESSED.

 Motor and Electrical Accessories

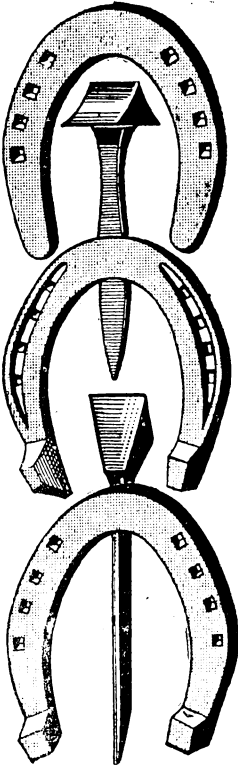
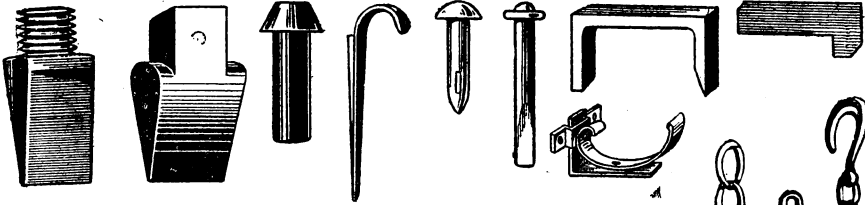
HOLLOW METAL BALLS. ELECTRO - PLATE PARTS.

GRIFFITHS, GILBART, LLOYD & CO., LTD.

SPECIALITY—
The "ELOYGO" (Regd.)
LONG THREAD
BEDSTEAD
RAIL KNOB.

HEAD OFFICE
(to which all communications should be addressed):
EMPIRE WORKS, Guest Street,
BIRMINGHAM; and
METAL BALL WORKS, Camden Street
(near Clissold Street), BIRMINGHAM.

Ring up Northern 13. Wire "AHEAD," BIRMINGHAM.



**THOMAS PARISH
& SON,**

RUMBOW WORKS,

HALESOWEN, near BIRMINGHAM.

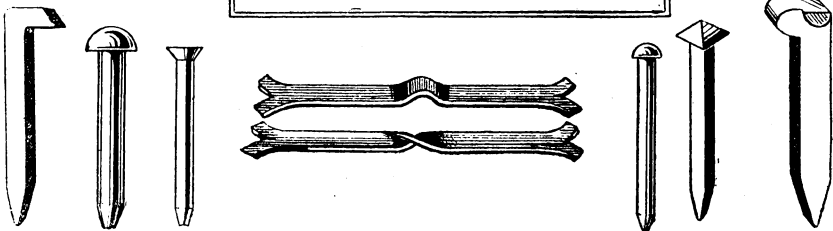
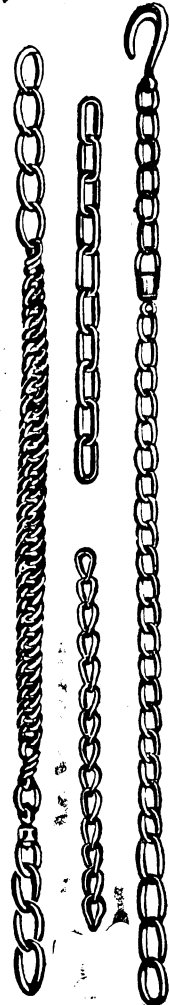
Contractors to
ADMIRALTY, WAR OFFICE,
AND PRINCIPAL RAILWAYS.

Manufacturers of

Wrought Nails, Railway Spikes,
Meat Hooks, Timber Dogs, Builders'
Ironwork, Rivets, Short and
Long Link Chains, Traces, Horse
and Mule Shoes, all kinds of
Cotter Bolts, Pins and Chains for
Wagon Builders, Frost Studs and
Nails, etc., Ox, Pig, and Horse
Rings, all kinds of Wrought
Ironwork.

**EXPORT REQUIREMENTS
SPECIALLY CATERED FOR.**

Telegrams: "PARISH HALESOWEN."
Telephone: "18 HALESOWEN."



**THE WINDSOR CYCLE WORKS,
48, PRINCIP STREET, BIRMINGHAM.**

Manufacturers of
CYCLES, FRAMES and FORKS
For Home and Export.

WIGGIN & DUNNING,

Wholesale and Retail Cabinet Makers.

BEDROOM SUITES A SPECIALITY.

All orders receive prompt and personal attention.

58, ALMA STREET, ASTON, BIRMINGHAM.

Telephone
No. 25 WILLENHALL.

Telegrams:
"STAR FOUNDRY," WILLENHALL.

WILLIAM HARPER, SON & CO.,

MALLEABLE AND SOFT GREY IRONFOUNDERS,

"STAR FOUNDRY,"

Birmingham Street, WILLENHALL, Staffs.

*CASTINGS—
FOR ENGINEERS, MOTOR TRADES, &c.*

CASTINGS SAND-BLASTED.

Telegraphic Address: "FAIRLEY, BIRMINGHAM."

Telephone No. 253.

JAMES FAIRLEY & SONS, Ltd.

Manufacturers of CAST STEEL of every description ;

**Also SHEAR, BLISTER, SPRING, SIEMENS-MARTIN (ACID),
AND BESSEMER STEEL.**

**LIGHT AND HEAVY STEEL FORGINGS,
AND TOOL BLANK SPECIALTIES.**

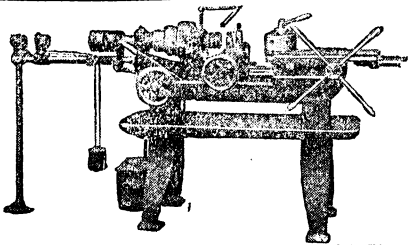
Chief Offices and Warehouse : OLD MINT, Shadwell Street, BIRMINGHAM.

**Works : Bramall Lane, SHEFFIELD; Mill Street Forge and
Rolling Mills, BIRMINGHAM.**



HIGH-SPEED

CAPSTAN LATHES.



THE

TIMBRELL & WRIGHT

MACHINE TOOL AND ENG. CO., LTD.,

SLANEY STREET, BIRMINGHAM.

Phone: CENTRAL 3723.

Telegrams: REVOLVING, BIRMINGHAM.

INDIGESTION

PAINS AFTER EATING, ACIDITY, BILIOUSNESS, CONSTIPATION

The sure way to get rid of Indigestion is to tone, strengthen, and stimulate the tired or overworked organs so that they are capable of performing their important task easily. This Mother Seigel's Syrup has done in tens of thousands of cases.

Mother Seigel's Syrup is made from the medicinal extracts of more than ten varieties of roots, barks, and herbs, which, in combination, exert a remarkably beneficial tonic effect on stomach, liver and bowels, toning, strengthening and stimulating them to healthy activity. With these in proper working order Indigestion is impossible. Test it yourself.

AND
STOMACH
AND LIVER
TROUBLES
ARE
BANISHED
BY



MOTHER SEIGEL'S SYRUP

Sold everywhere.

NOSTROLINE

TRADE MARK REGD.

"OUGHT TO BE LOCKED UP."

A man or a woman going about with a cold in the head ought to be locked up or put in quarantine. But as that can't be done, the force of public opinion urges them to use "Nostroline" Nasal Specific. Had they only used "Nostroline" before the cold developed, they would never have become a misery to themselves and a danger to others. School teachers ought to insist upon the children who have colds using "Nostroline," and Mothers who would keep the kiddies free from sickness should give them some before they go to School or to the Pictures. Just a little smeared in the nostrils and sniffed up and you have the best protection against infection. Use "Nostroline" Nasal Specific to prevent and cure Nasal Catarrh, Cold in the Head, Influenza, and Sore Throat.

All Chemists, 1/3 and 3/-.
In case of delay, send P.O. 1/5 or 3/3 to

NOSTROLINE LABORATORIES, 520, CLIFTON, BRISTOL.

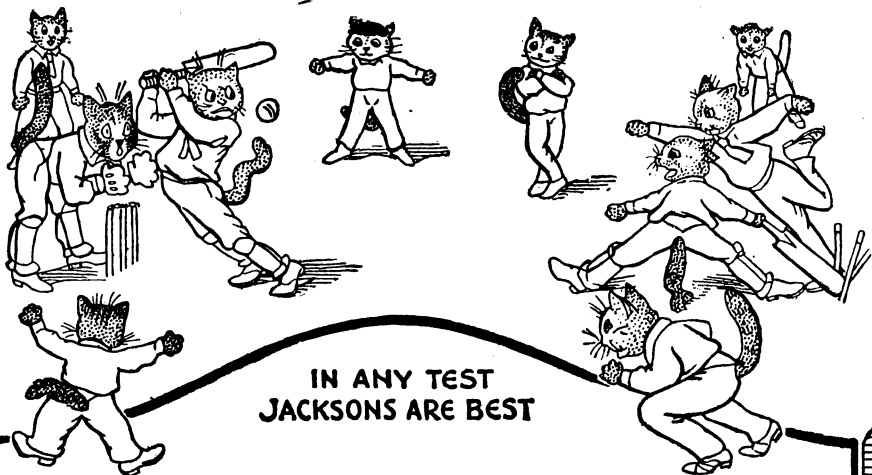


For Your Holidays

THE G.C.R. HEALTH AND HOLIDAY RESORTS GUIDE

**Will give you just the
Information you want.**

Sent post free on application to the Superintendent of
the Line, Great Central Railway, Marylebone Station,
London, N.W.1.



**IN ANY TEST
JACKSONS ARE BEST**

THERE is no question about the economy of purchasing at Jacksons. If you have not already seen the remarkable value of the goods we specialise in, we invite you to visit one of our many branches.

There is sure to be something you are in need of in the way of Hats, Boots, Raincoats, etc., and by obtaining your requirements at Jacksons, you will be sure of getting up-to-date goods at wonderfully low prices.

Jacksons'

World Famous

Gent's Hats, Ladies' Trimmed Hats, ready to wear, Ladies' and Gent's Boots, Shoes, Mackintoshes and Umbrellas.

All in the Latest Styles.



© MS

MAIL ORDER DEPARTMENT If you cannot visit one of our Branches you can easily order by mail, if you send for Illustrated Catalogue of the Latest Fashions. Fit & Style guaranteed.

Value always the Best.

JACKSONS LTD.

Victoria Works, Stockport, Eng.

Branches in all large towns.



CUNARD LINE



Regular Passenger & Freight Services

FROM

LIVERPOOL LONDON SOUTH-AMPTON BRISTOL QUEENSTOWN CHERBOURG ANTWERP ROTTERDAM HAMBURG AND DANTZIG TO UNITED STATES AND CANADA

MEDITERRANEAN TO NEW YORK

Regular Freight Sailings from

LIVERPOOL LONDON MANCHESTER SWANSEA ANTWERP & ROTTERDAM

TO

FRENCH MEDITERRANEAN LEVANT AND BLACK SEA PORTS

SAILINGS TO INDIA AUSTRALIA NEW ZEALAND JAPAN AND CHINA

LIVERPOOL :

CUNARD BUILDING, PIER HEAD

London, E.C. 2 : 51, Bishopsgate.

London, S.W. 1 : 29-31, Cockspur St.

Offices and Agencies everywhere.

69



LAMPOR T AND HOLT LINE

TO

SOUTH AMERICA.

SERVICES.

FIRST-CLASS PASSENGER AND MAIL STEAMERS.

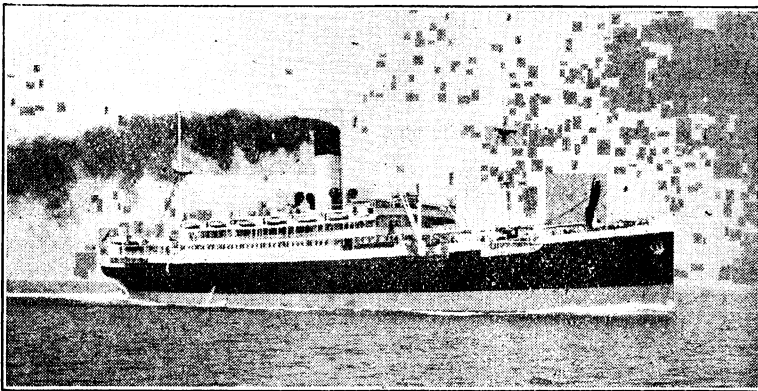
Between NEW YORK, BRAZIL and RIVER PLATE.

FIRST-CLASS CARGO STEAMERS.

NEW YORK to RIVER PLATE. Between NEW YORK and MANCHESTER.
BRAZIL to NEW ORLEANS. BRAZIL to NEW YORK.

FIRST-CLASS CARGO STEAMERS (carrying Passengers).

Separate Services: GLASGOW and LIVERPOOL, and from LONDON (fortnightly)
Direct to BAHIA, RIO DE JANEIRO and SANTOS.
Direct to MONTE VIDEO and BUENOS AIRES.



FLEET.

	Gross Tons.		Gross Tons.		Gross Tons.
VAUBAN (T.S.S.)	10,660	PLUTARCH	5,613	THESPIA	4,343
VESTRIS (T.S.S.)	10,494	ARCHIMEDES	5,364	SIDDONS	4,189
VASARI	10,117	BRONTÉ	5,313	TINTORETTO	4,181
MARCONI (T.S.S.)	7,402	BROWNING	5,300	CAMOENS	0,70
DELAMBRE	7,351	BRUYÈRE	5,300	BYRON	3,909
MILLAIS	7,300	BALFE	5,300	TENNYSON	3,901
LAPLACE	7,237	BERNINI	5,298	SALLUST	3,628
MTRILLO (T.S.S.)	7,206	RAEBURN	5,183	VIRGIL	3,338
MERISSONIER (T.S.S.)	7,205	RIELA	5,150		
MOLÈRE (T.S.S.)	7,205	SOCRATES	4,979		
CONDÉ	7,200	CAVOUR	4,914	Building.	
NEWTON	6,509	STRABO	4,910	Steamer (T.S.S.)	13,500
NASMYTH	6,508	EUCLID	4,770	Steamer (T.S.S.)	13,500
ROSSETTI	6,508	RAPHAEL	4,699	LALANDE	7,240
HERSCHEL	6,293	REMBRANDT	4,667	HOGARTH	6,300
HOLBEIN	6,278	SHERIDAN	4,665	BONHEUR	5,300
DRYDEN	5,839	SWINBURNE	4,658	BOSWELL	5,300
PHIDIAS	5,623	ROMNEY	4,501	BALZAC	5,300
				Steamer	5,300

For Rates of Freight and Passage apply to:—

LAMPOR T & HOLT, LIMITED,

Royal Liver Building, LIVERPOOL; 36, Lime Street, LONDON, E.C.3;
21, York Street, MANCHESTER; 42, Broadway, NEW YORK.

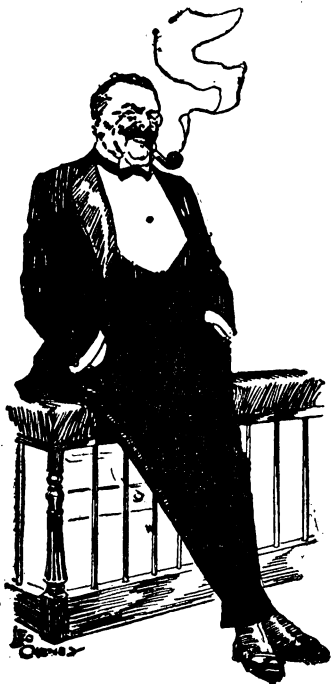
Telegraphic Addresses: "LAMPOR T," LIVERPOOL; "LAMPOR T, GRACE," LONDON;
"LAMPOR T," MANCHESTER; "LAMPOR T," NEW YORK.

There are qualities in
Chairman

that make it as nearly perfect a tobacco as is possible, and a sure source of pleasure with every pipe.

—about six hours to every ounce.

Fragrant — cool — clean.



Boardman's is the same tobacco but milder, and Recorder the same but fuller flavoured.

In 1 and 2 oz. lead packets and 4, 8 and 16 oz. tins at
1/1 per oz.
 from all tobacconists.

R. J. Lea, Ltd.,

Manchester.

VENTNOR, Isle of Wight.—THE MARINE BOARDING HOUSE AND PRIVATE HOTEL The most popular. Facing Sea. Uninterrupted Sea Views. See page civ.

I.W.R.] Victoria, London Bridge and Waterloo to Ryde and Ventnor.

Table with columns for Week Days and Sundays, listing departure and arrival times for routes between Victoria, London Bridge, Waterloo, Ryde Pier Head, Ryde (Esplanade), Ryde (St. John's Rd.), Brading Junction, Sandown Junction, Shanklin, Wroxall, and Ventnor.

NOTE.—Through Passengers travelling via Southsea Pier must make their own way between Portsmouth Town Station and Clarence Pier. S Runs on Saturdays only. P Runs on Saturdays only. Q Calls to set down on Saturdays only. R Runs on Saturdays only. U Calls to set down on Saturdays only. V Calls to set down on Saturdays only. W Calls to set down on Saturdays only. X Calls to set down on Saturdays only. Y Calls to set down on Saturdays only. Z Calls to set down on Saturdays only.

Table with columns for Week Days and Sundays, listing departure and arrival times for routes between Victoria, London Bridge, Waterloo, Ryde Pier Head, Ryde (Esplanade), Ryde (St. John's Rd.), Brading Junction, Sandown Junction, Shanklin, Wroxall, and Ventnor.

I.W.C.R.] London, Portsmouth, Ryde, Newport, and Cowes.

Table with columns for Week Days and Sundays, listing departure and arrival times for routes between Victoria, Waterloo, London Bridge, Portsmouth Harb., Stokes Bay, Southsea Pier, Ryde (Pier Head), Ryde (Esplanade), Ryde (St. John's Road), Ashley, Haven Street, Wootton, Whippingham, Newport, Mill Hill, and Cowes.

NOTE.—Passengers who find their own way between Ryde Pier Head and St. John's R. Station. N Does not run on Saturdays. P This is Sunday night time from Ryde Pier Head to St. John's R. Station. Q Calls by signal only. R Runs on Saturdays only. S Portsmouth Waterloop. U Calls to set down on notice being given to the station. V Calls to set down on notice being given to the station. W Calls to set down on notice being given to the station. X Calls to set down on notice being given to the station. Y Calls to set down on notice being given to the station. Z Calls to set down on notice being given to the station.

Table with columns for Week Days and Sundays, listing departure and arrival times for routes between Cowes, Mill Hill, Newport, Whippingham, Wootton, Haven Street, Ashley, Ryde (St. John's Road), Ryde (Esplanade), Ryde (Pier Head), Ryde (Pier Head), Ryde (to Stokes Bay), Waterloo, Southsea Pier, Portsmouth Harb., London Bridge, and Victoria.

Brading Harbour Branch.

Table with columns for Week Days and Sundays, listing departure and arrival times for routes between Brading Junc., St. Helens, and Bembridge.

I.W.C.R.] Cowes, Sandown, Newport, and Freshwater Subject to alteration during the month.

Table with columns for Week Days and Sundays, listing departure and arrival times for routes between Cowes, Sandown, Newport, Calisbrook (for Castle), Calisbrook (for Shellfish), Ringwood, Yarmouth, Freshwater, Freshwater, Yarmouth, Ringwood, Calisbrook, Calisbrook (for Castle), Newport, Sandown, and Cowes.

NOTE.—Via Ryde St. John's Roads (I.W.R. Stations). U Calls to set down on Saturdays only. V Calls to set down on Saturdays only. W Calls to set down on Saturdays only. X Calls to set down on Saturdays only. Y Calls to set down on Saturdays only. Z Calls to set down on Saturdays only.

I.W.C.R.] Cows, Newport, Ventnor Town, and Sandown.

Table with columns for Week Days, WATERLOO, SOUTHAMPTON TOWN, SOUTHAMPTON (Steamer), COWES (Steamer), COWES, MILL HILL, NEWPORT, SHIDE, BLACKWATER, MERSTONE, MERSTONE, GODSHILL, WHITWELL, ST. LAWRENCE, VENTNOR TOWN, MERSTONE, HORRINGFORD, NEWBURCH, ALVERSTON, SANDOWN.

Table with columns for Week Days, SANDOWN, ALVERSTON, NEWBURCH, HORRINGFORD, MERSTONE, VENTNOR TOWN, ST. LAWRENCE, WHITWELL, GODSHILL, MERSTONE, MERSTONE, BLACKWATER, SHIDE, NEWPORT, MILL HILL, COWES, COWES (Steamer), SOUTHAMPTON, SOUTHAMPTON TOWN, WATERLOO.

Breakfast Car & Luncheon or Dining Car. Via Southampton West. Does not run on Saturdays.

Table with columns for Sundays, WATERLOO, SOUTHAMPTON TOWN, SOUTHAMP. (Steamer), COWES (Steamer), COWES, MILL HILL, NEWPORT, SHIDE, BLACKWATER, MERSTONE, MERSTONE, GODSHILL, WHITWELL, VENTNOR TOWN, MERSTONE, HORRINGFORD, NEWBURCH, ALVERSTON.

Table with columns for Sundays, SANDOWN, ALVERSTON, HORRINGFORD, MERSTONE, VENTNOR TOWN, ST. LAWRENCE, WHITWELL, GODSHILL, MERSTONE, MERSTONE, BLACKWATER, SHIDE, NEWPORT, MILL HILL, COWES, COWES (Steamer), SOUTHAMPTON TOWN, WATERLOO.

Joint Railway Companies' Steam Packet Service.

Table with columns for Week Days, PORTSMOUTH HARBOUR, SOUTHSEA (Clarence Pier), RYDE FERR, COWES PIER, COWES PIER, RYDE FERR, SOUTHSEA (Clarence Pier), PORTSMOUTH HARBOUR.

Southampton, Cowes and Portsmouth Steam Packet Service.

Table with columns for Week Days, SOUTHAMPTON (Royal Pier), COWES, RYDE, SOUTHSEA (Clarence Pier), PORTSMOUTH HARBOUR, SOUTHAMPTON (Royal Pier), COWES, RYDE, SOUTHSEA (Clarence Pier), PORTSMOUTH HARBOUR.

Passengers must make their own way between Southampton Town or West Stations and the Royal Pier.

One of the minor results of the War is that the
Samples of

CRAIG'S

VELVET BLOTTING

which have so much delighted the users of "Cassell's
Time Tables" can no longer be inserted between its
leaves, but you can

ORDER FROM YOUR STATIONERS.

ONLY GENUINE IF EACH SHEET BEARS
THIS WATERMARK

The
perfect
product
of
Practical
Experience,

NO 6 MILL
EXTRA SUPERFINE
Robt Craig & Sons
VELVET BLOTTING

Scientific
Investiga-
tion,
and
Technical
Skill.

SOLE MANUFACTURERS—

ROBT CRAIG & SONS LTD

THE LARGEST MAKERS OF BLOTTING PAPERS IN THE WORLD.