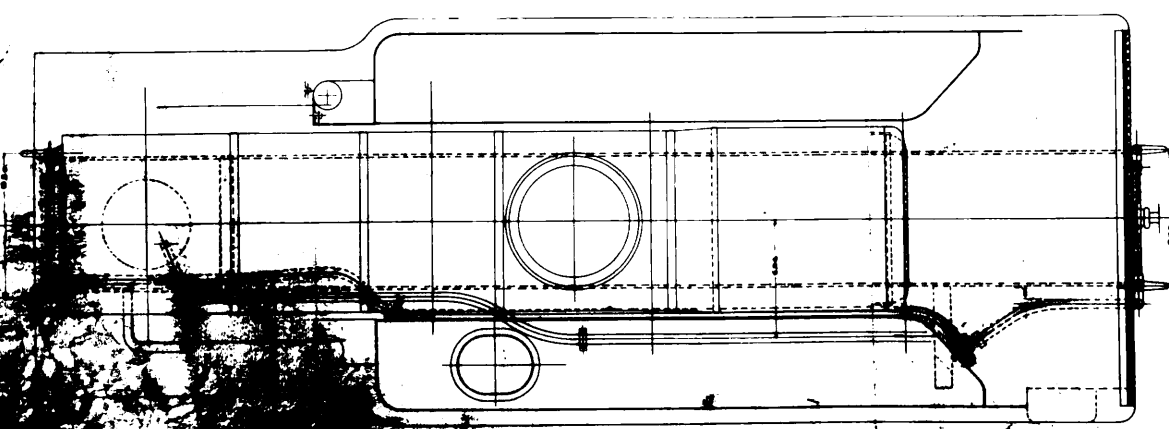
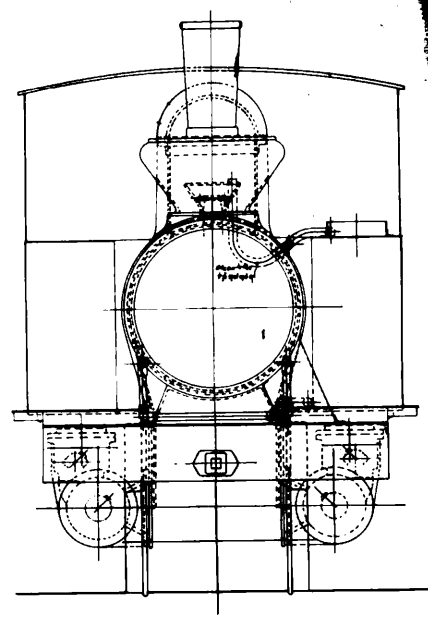
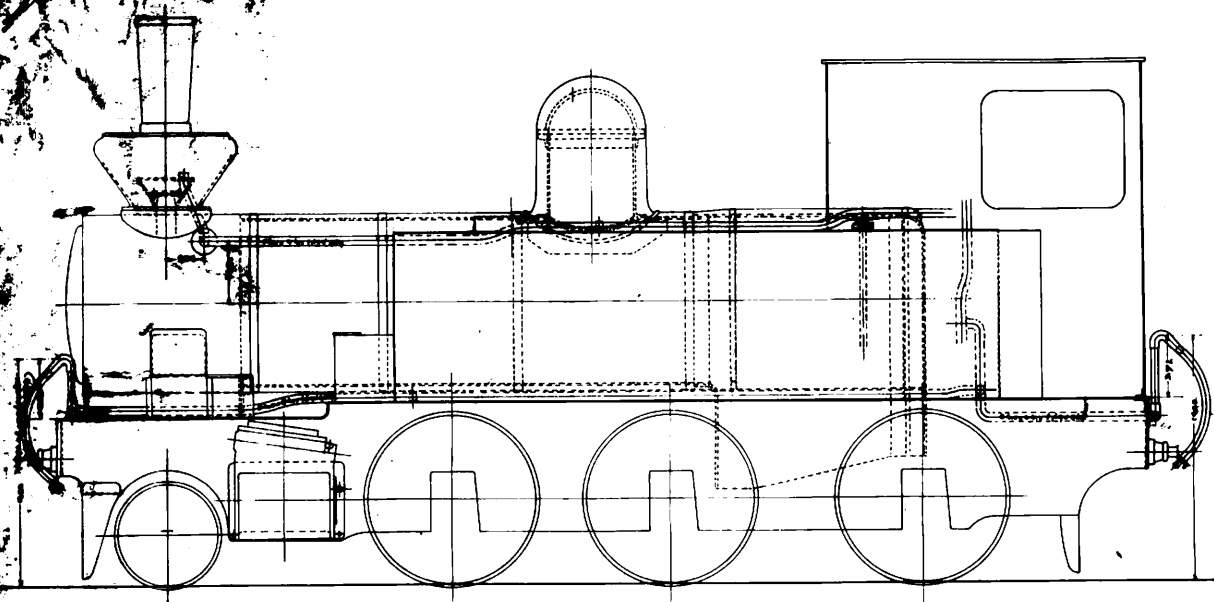


RÖR-RITNING

Tilskilte Tekniske Tegninger - 2. udgave 1971/72, 2. udgave 1971/72

AG 100 - L 10

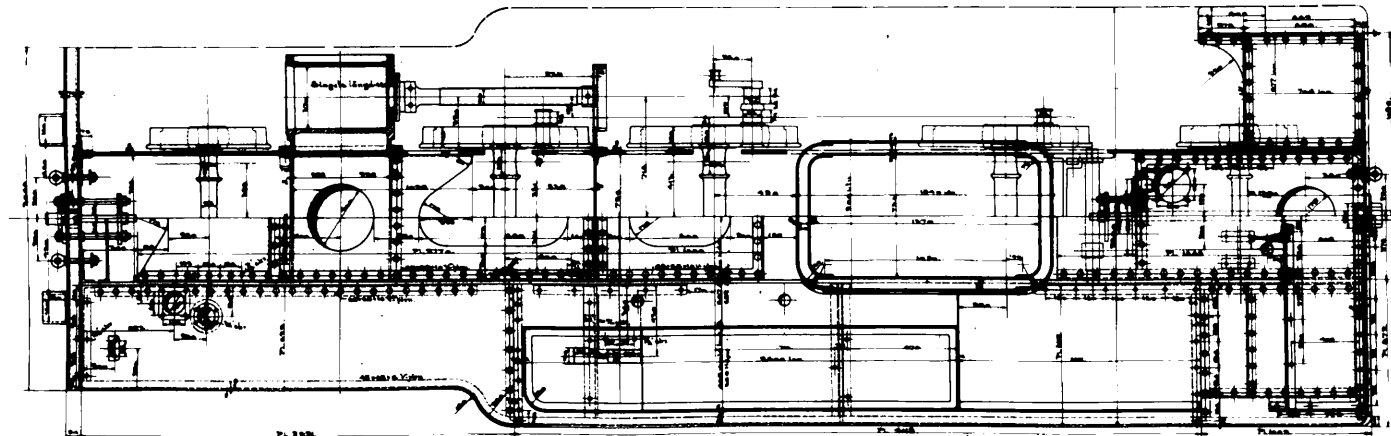
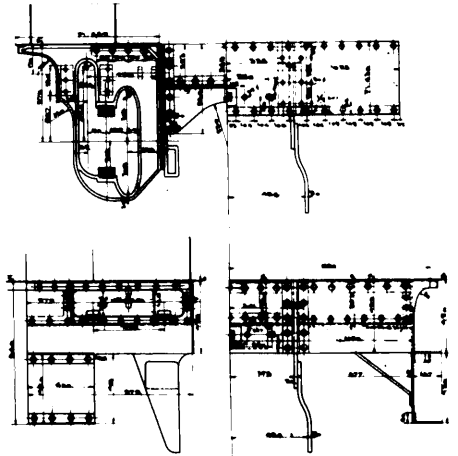
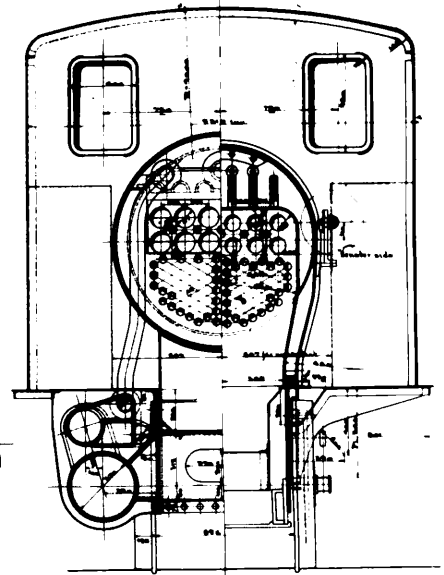
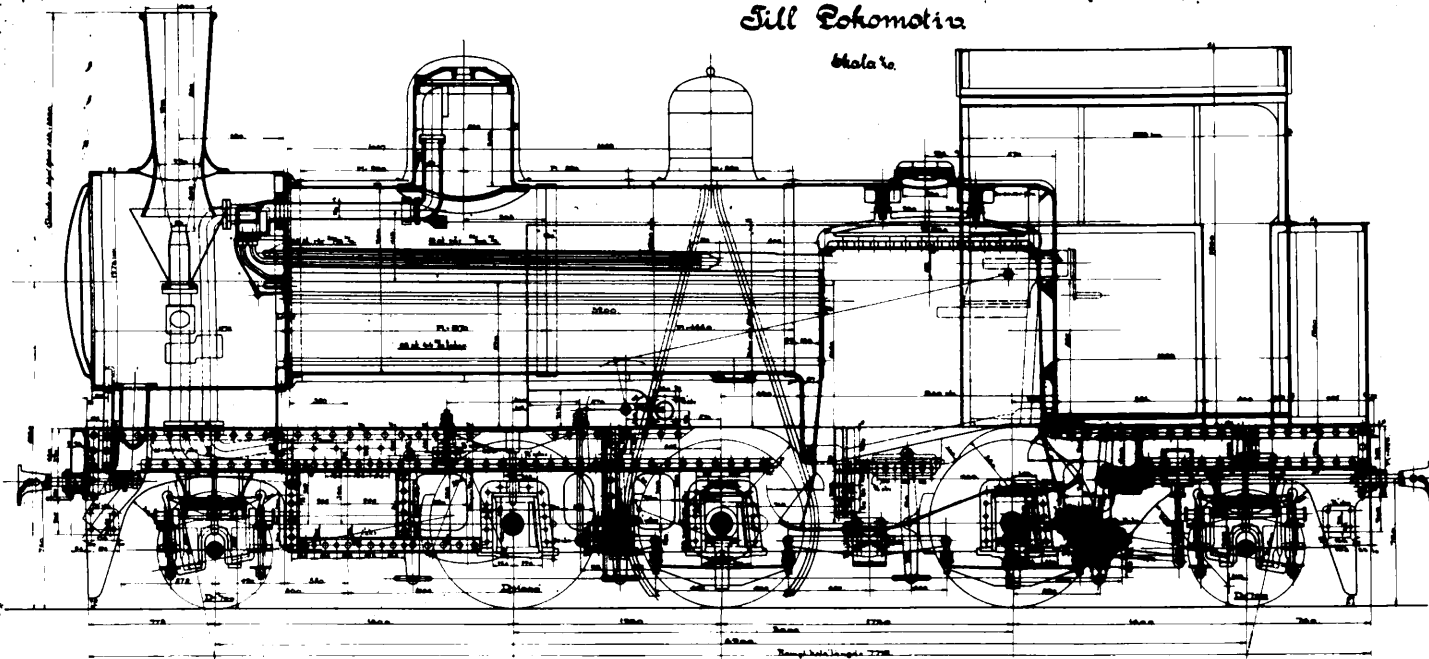


Model 100, 2. udgave 1971/72

1971

Sill Lokomotiva

Mala

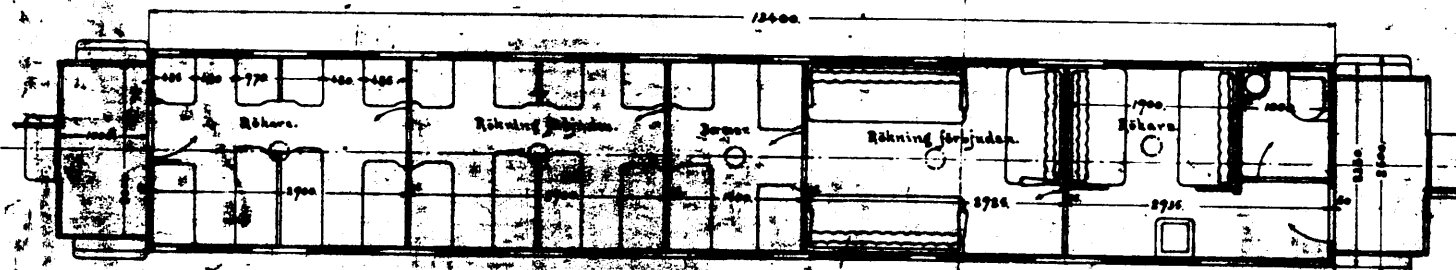
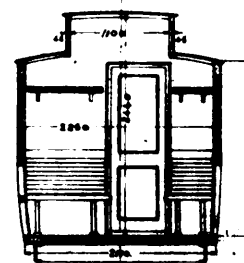
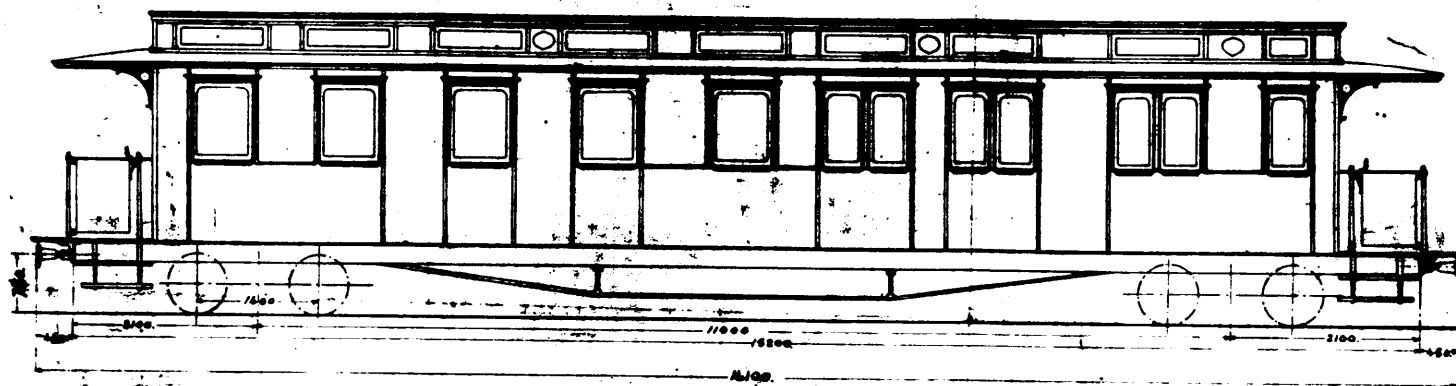


№	Имя	Дата

2.8190  
K 16

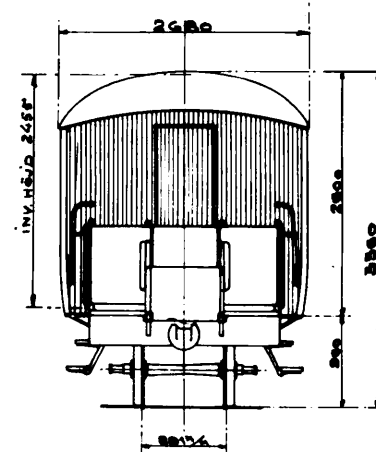
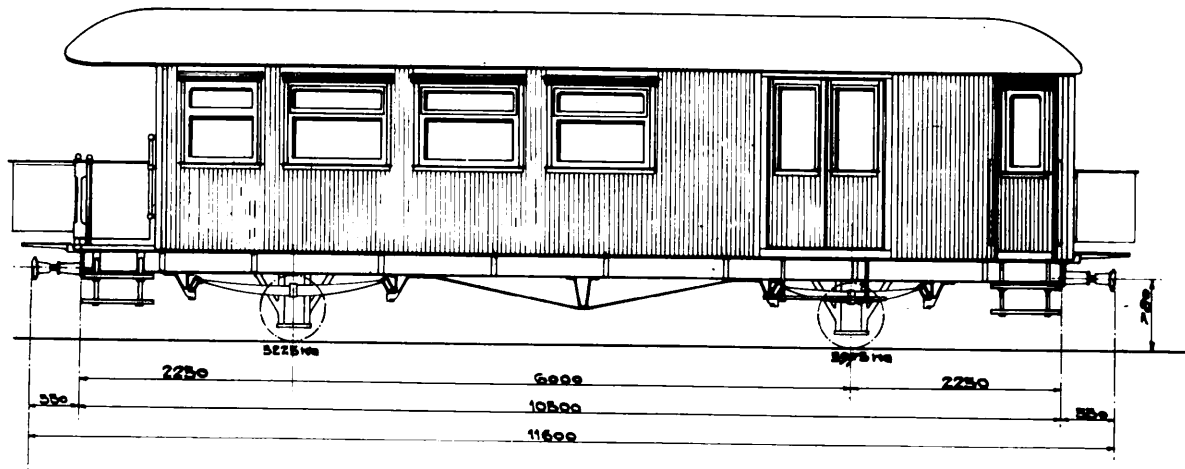


Komb. 2<sup>de</sup> & 3<sup>de</sup> klass bogiepersonvagn  
 för 891 mm. spår.  
 Skala 1/40.

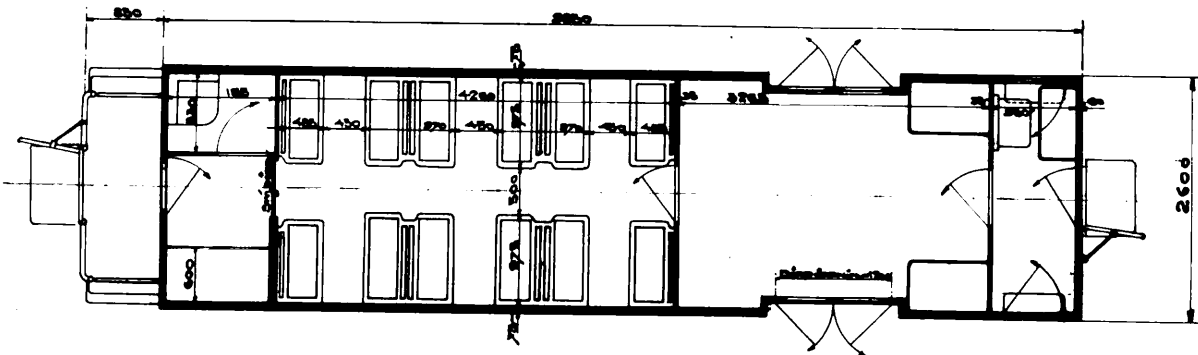


**VAGNFABRIKS  
 AKTIEBOLAGET**  
 I SÖDERTELGÅ  
 den 10. 6. 1908.  
 A. L.

3518.



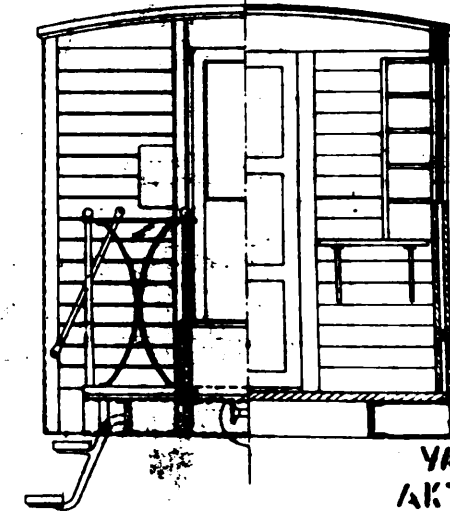
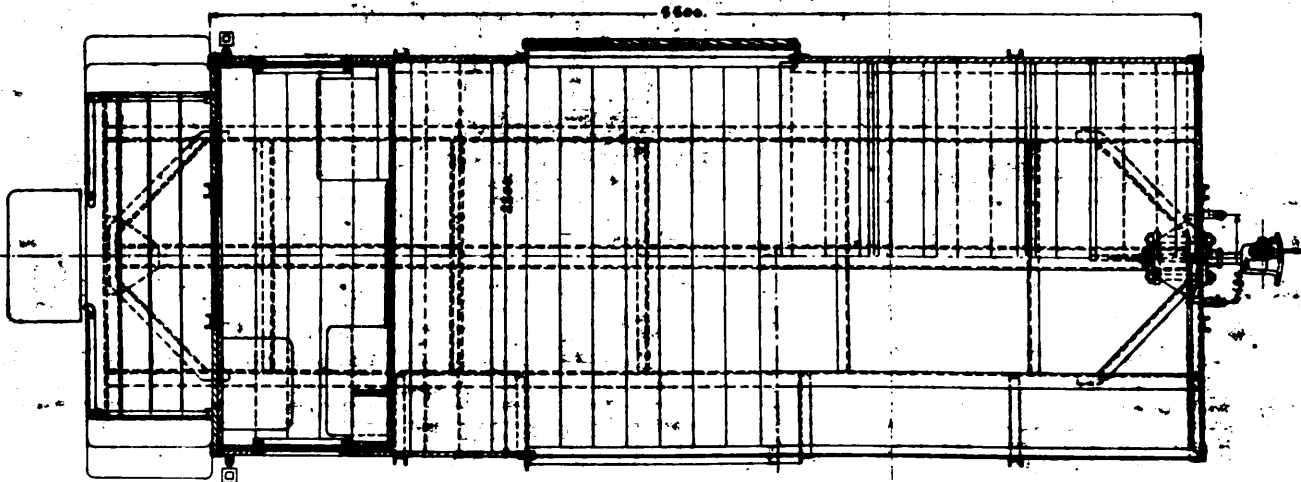
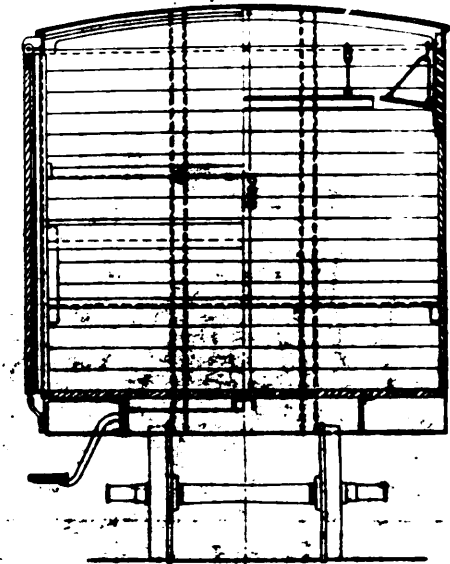
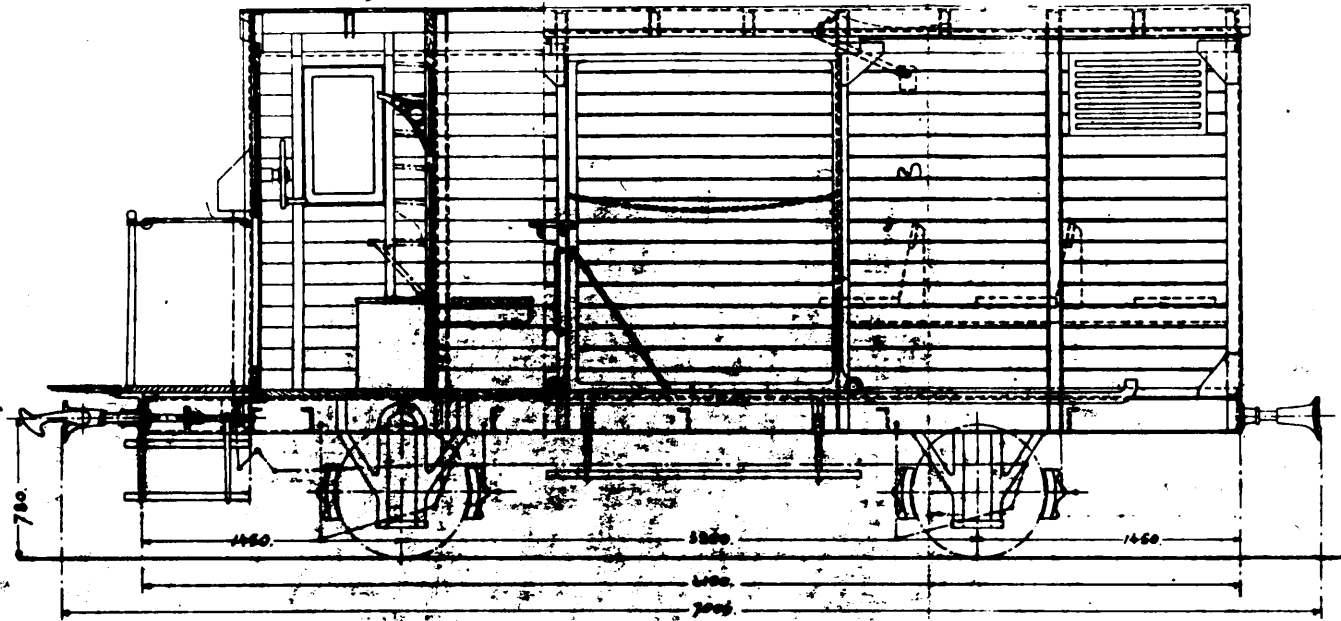
VÄGGEN VÄGER 112 TON (TON)



LIT C F MED RIBBING FÖR 801<sup>7</sup>/m GÅNG  
 RITN. N: 4681 **2R.4681**  
 SHÅP N: 4/1  
 PÅCK N: 3.  
 0. 26/26.

Godsvagn lit. F för 891 2 sprv.

Skala 1/20.



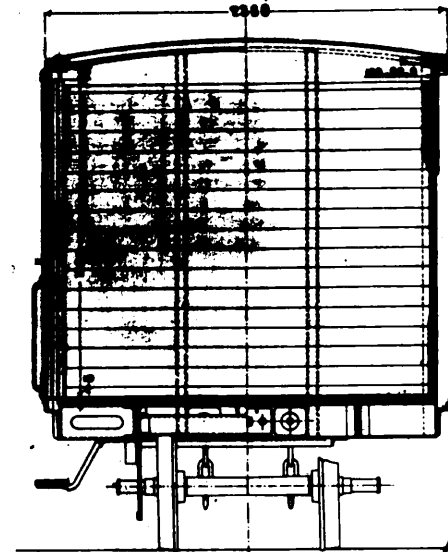
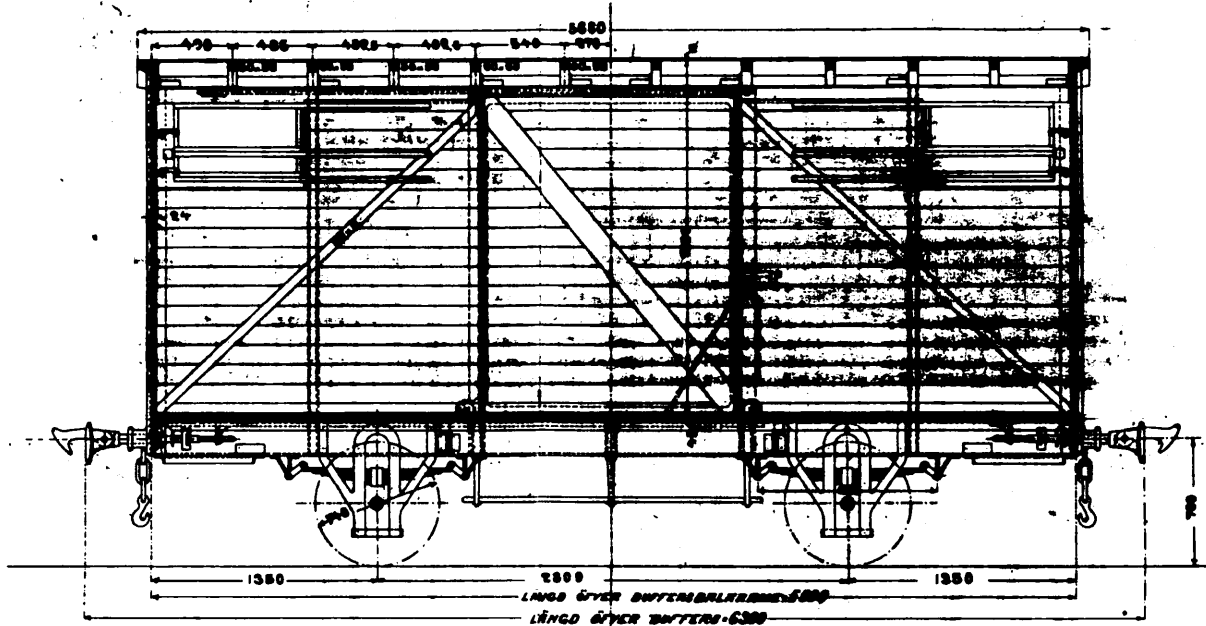
3526.

VAGNEN  
AKTIEBOLAGET  
I SÖDER

SAJ-2

LÖP. N<sup>o</sup> 14400.

G. M. W. D. 21-10-1903.



GOLFPLANK 178.45 <sup>1</sup>/<sub>16</sub> M.  
PANELBRÄDER 116.24 <sup>1</sup>/<sub>16</sub> M.  
TÄNBRÄDER 116.15 <sup>1</sup>/<sub>16</sub> M.



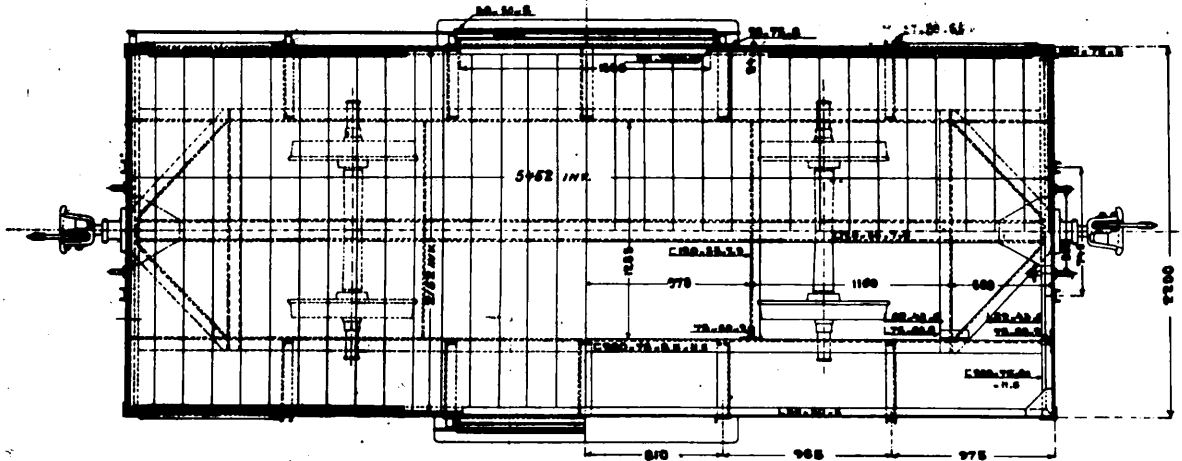
GÖDSVAGN LITT. G FÖR 830 <sup>1</sup>/<sub>16</sub> M SPÄRVIDD.

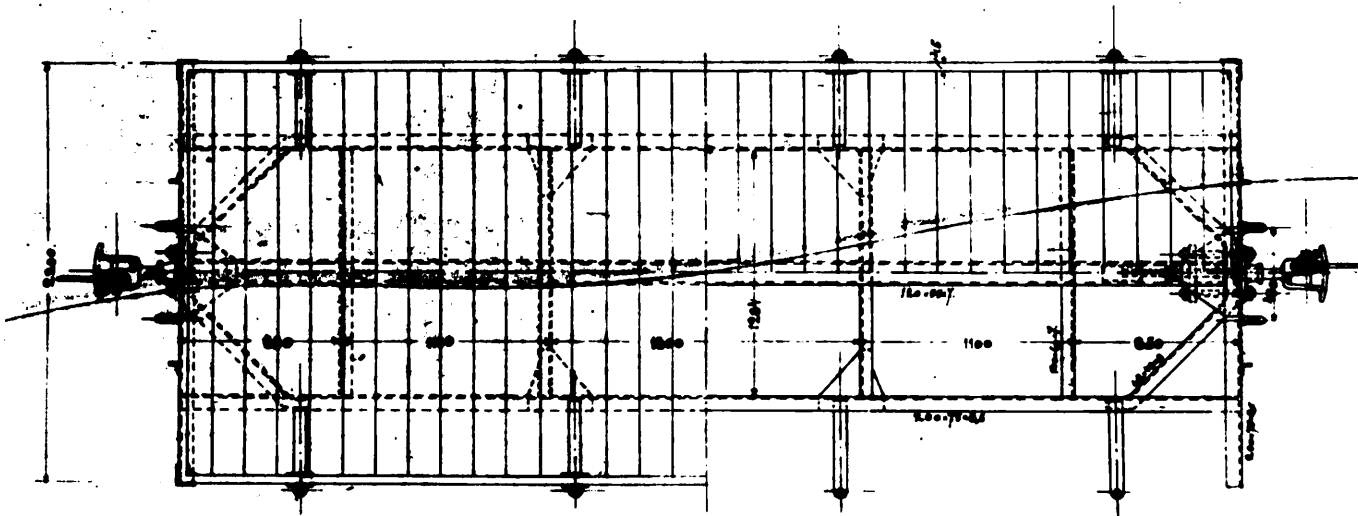
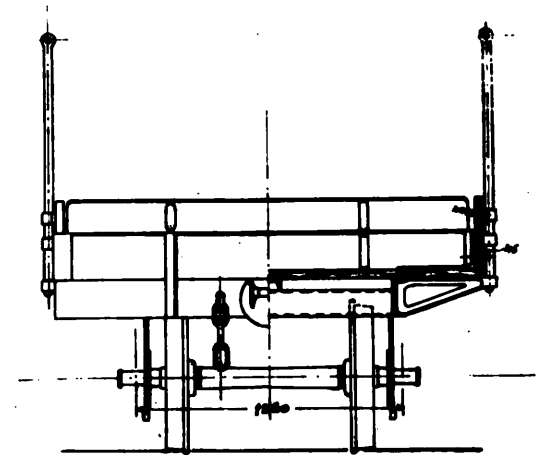
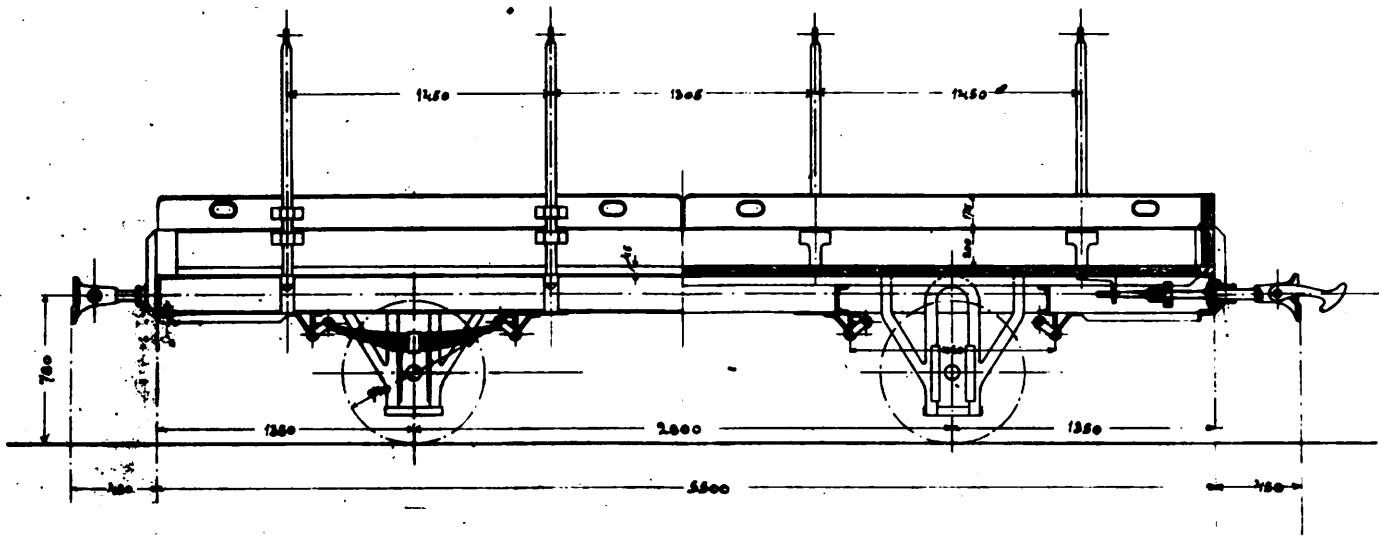
SKALA 1:20. <sup>1</sup>/<sub>16</sub> M MÅTT.

VAGNEN VÄGER TON.

" LASTAR "

GOLFYTAN 11.4 M<sup>2</sup>.





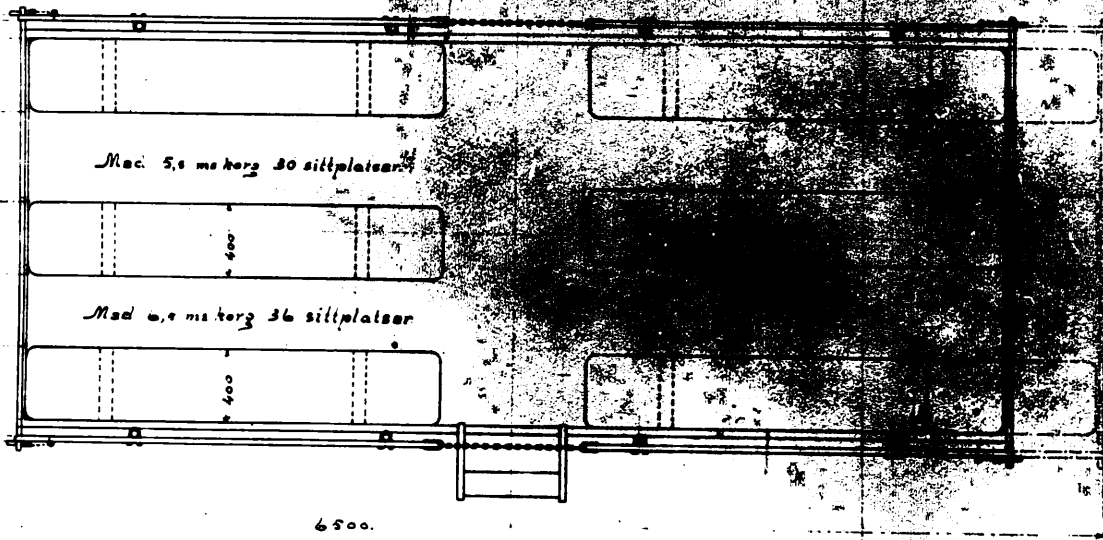
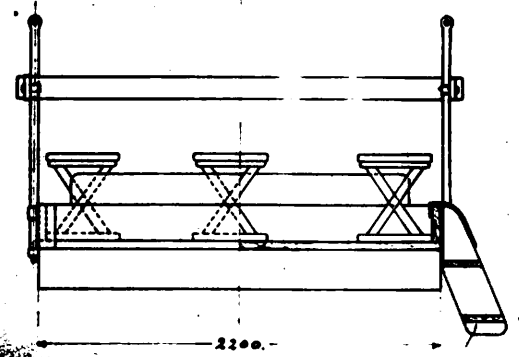
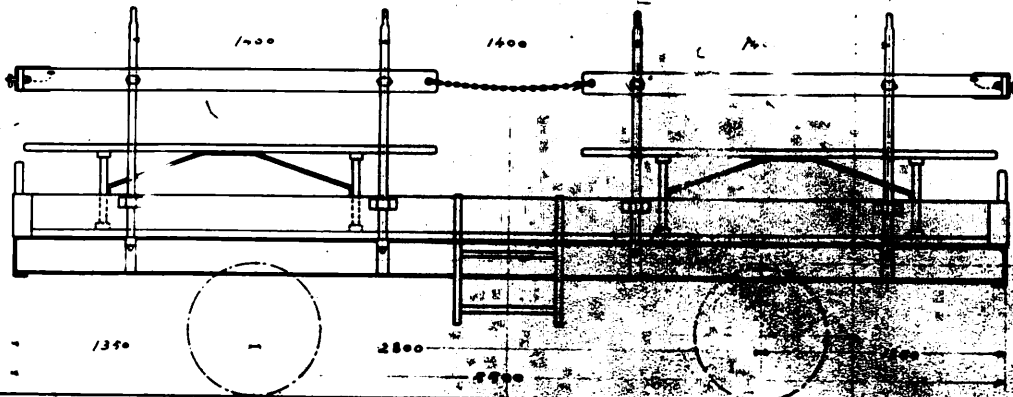
Godsvagn lit. 276

för 891 mm spår

Skala 1:400

**VAGNFABRIKS  
AKTIEBOLAGET**  
I SÖDERTÄLJE  
den 10. 8. 1902  
A.B.



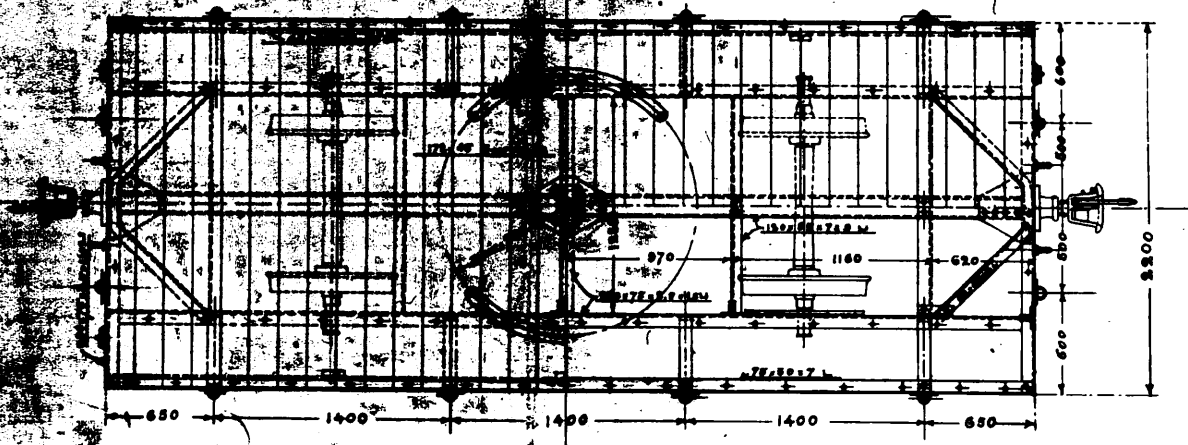
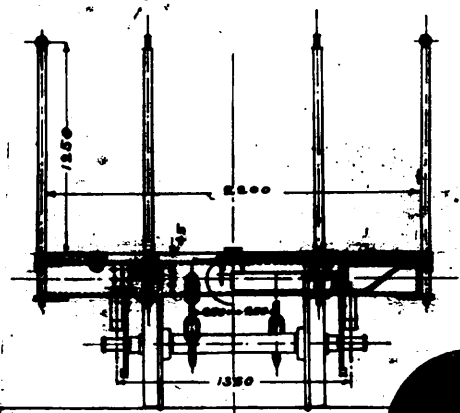
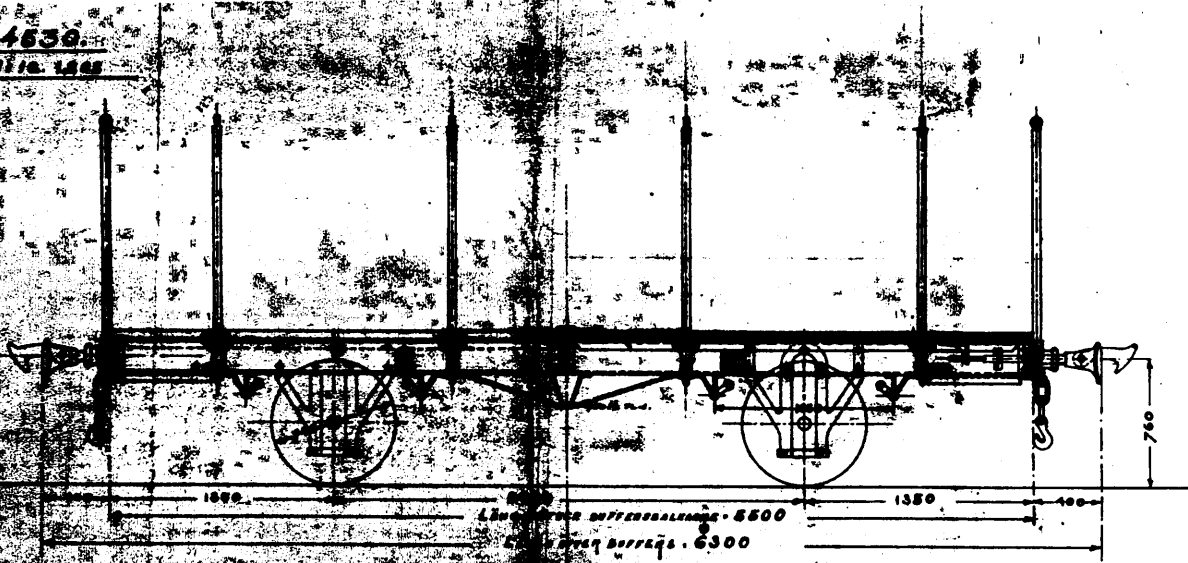


Anordning af bänkar  
å lit. T6-vagn för 891 m/m.  
spårvidd.  
Skala 1/20.

VAGNFABRIKS  
 AKTIEBOLAGET  
 I SÖDERTELJE  
 den 14. 3. 1902.  
 9.1.2.

3484.

Typ. № 14630.  
g.m.w. till 1905



Godsvagn Lit. NN.  
 MED FÖRSTÄRKNING OCH ANORDNING FÖR SVÄNGL.  
800<sup>1/2</sup> spårvidd.  
 Vagnen väger ton  
 Lastar 2 - -  
 GOLFVATTA 12,5 MM.

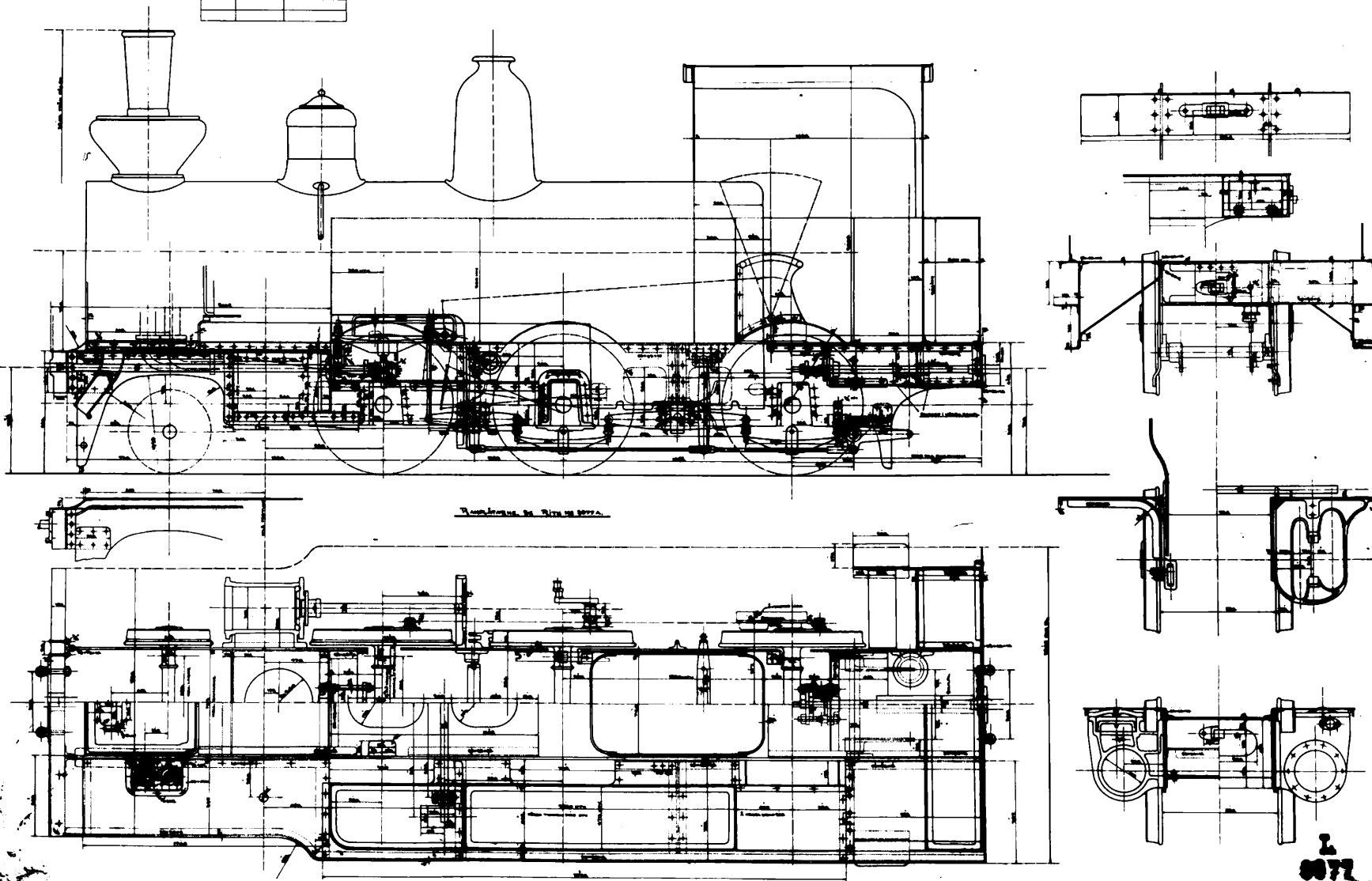
SWALA H.B.C. NYN MITT.

10 svänsstänger med 10 mm sida och 2,5 mm djup.  
 2 stölpåsar för svänsen i båda ändarna samt med golfvatt.  
 2 stölpåsar för svänsen med nettingar med timmkläd.

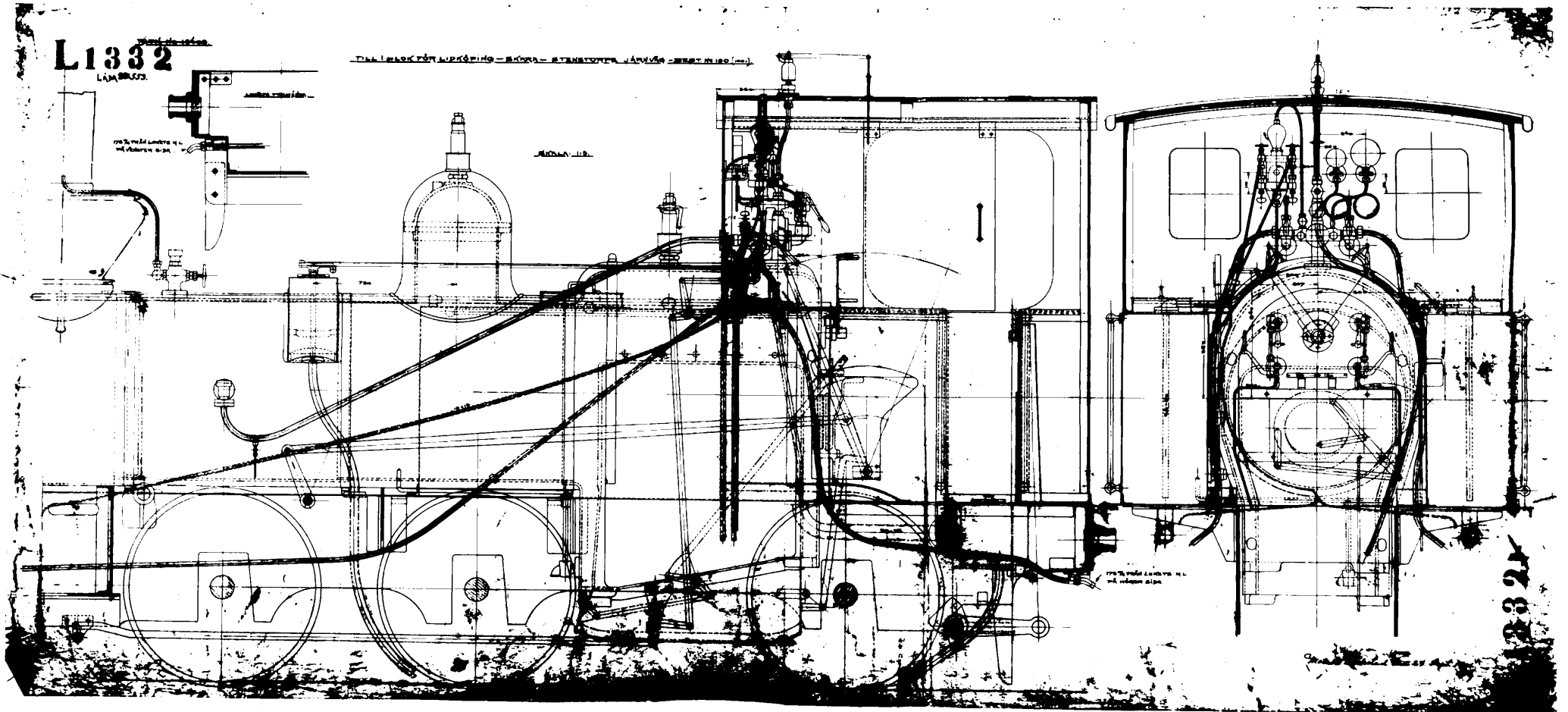
TILL LOKOMOTIV

SKALA 1/10 MÅTT

№	Benämning	Antal



1  
5077

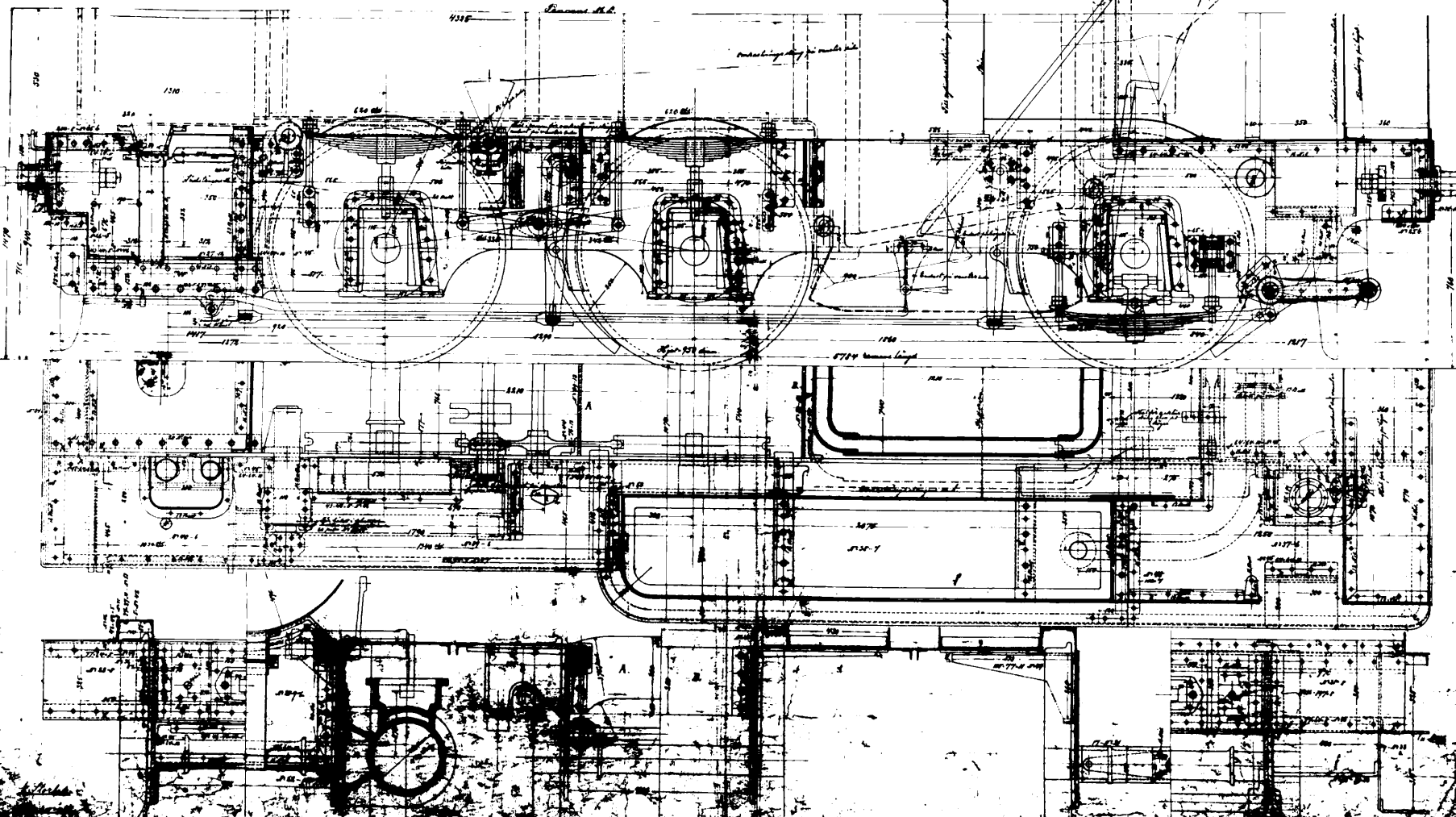


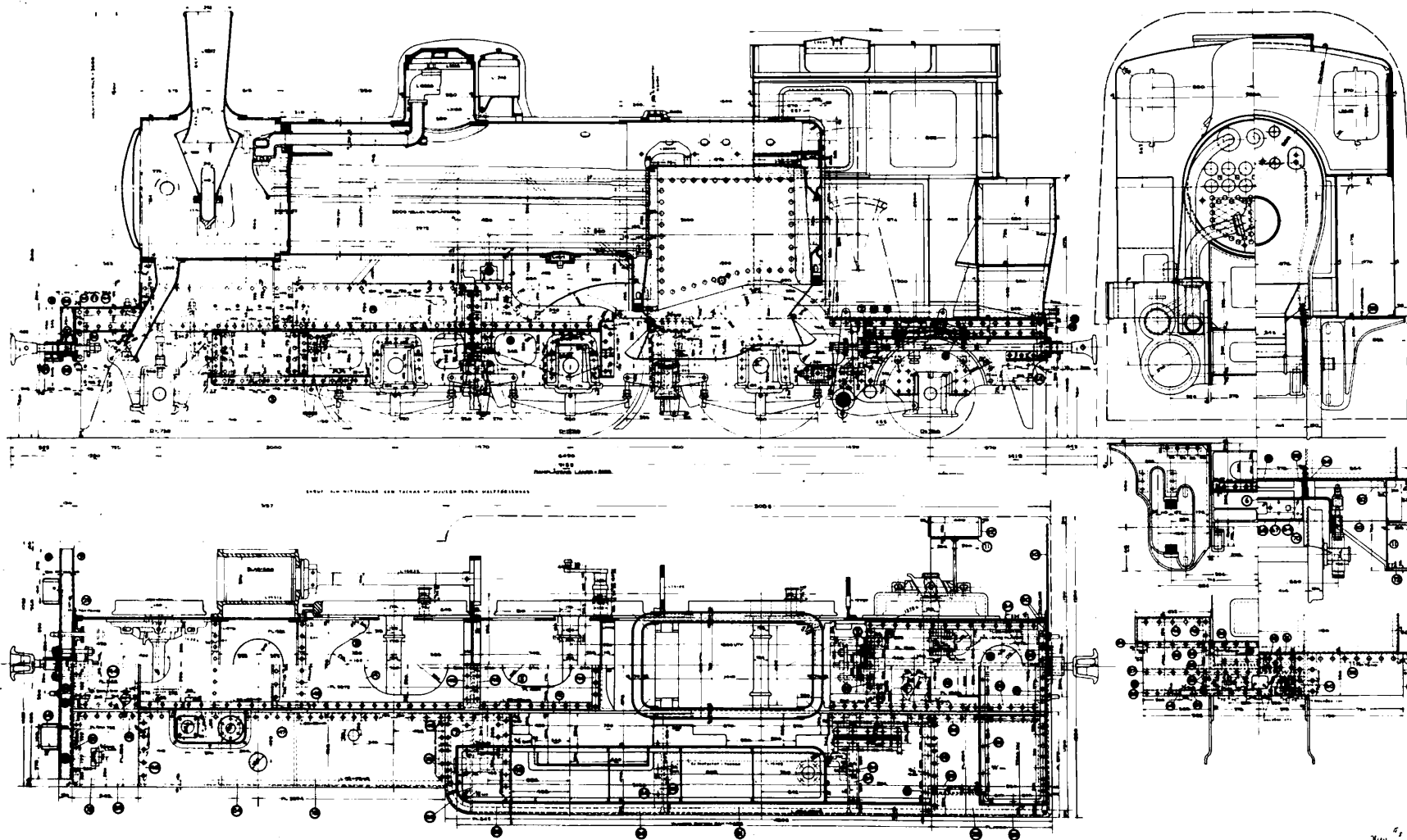
LSSJ-1

L1343

L1343.26

*Plan 11. Konstruktion für Kettengänge - Antrieb - Formgebung - Blatt 11/1343 (1911)*





№	Имя	Профессия	№	Имя
1	...	...	1	...
2	...	...	2	...
3	...	...	3	...
4	...	...	4	...
5	...	...	5	...
6	...	...	6	...
7	...	...	7	...
8	...	...	8	...
9	...	...	9	...
10	...	...	10	...
11	...	...	11	...
12	...	...	12	...
13	...	...	13	...
14	...	...	14	...
15	...	...	15	...
16	...	...	16	...
17	...	...	17	...
18	...	...	18	...
19	...	...	19	...
20	...	...	20	...
21	...	...	21	...
22	...	...	22	...
23	...	...	23	...
24	...	...	24	...
25	...	...	25	...
26	...	...	26	...
27	...	...	27	...
28	...	...	28	...
29	...	...	29	...
30	...	...	30	...
31	...	...	31	...
32	...	...	32	...
33	...	...	33	...
34	...	...	34	...
35	...	...	35	...
36	...	...	36	...
37	...	...	37	...
38	...	...	38	...
39	...	...	39	...
40	...	...	40	...
41	...	...	41	...
42	...	...	42	...
43	...	...	43	...
44	...	...	44	...
45	...	...	45	...
46	...	...	46	...
47	...	...	47	...
48	...	...	48	...
49	...	...	49	...
50	...	...	50	...
51	...	...	51	...
52	...	...	52	...
53	...	...	53	...
54	...	...	54	...
55	...	...	55	...
56	...	...	56	...
57	...	...	57	...
58	...	...	58	...
59	...	...	59	...
60	...	...	60	...
61	...	...	61	...
62	...	...	62	...
63	...	...	63	...
64	...	...	64	...
65	...	...	65	...
66	...	...	66	...
67	...	...	67	...
68	...	...	68	...
69	...	...	69	...
70	...	...	70	...

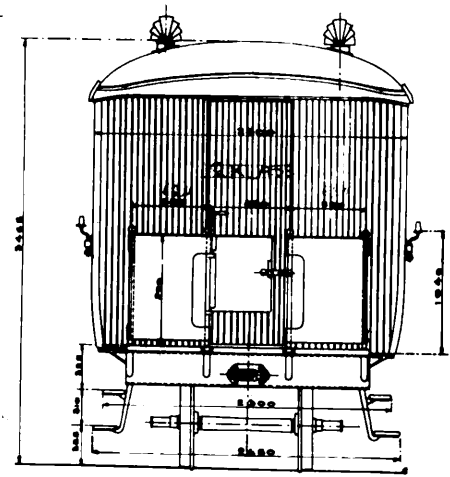
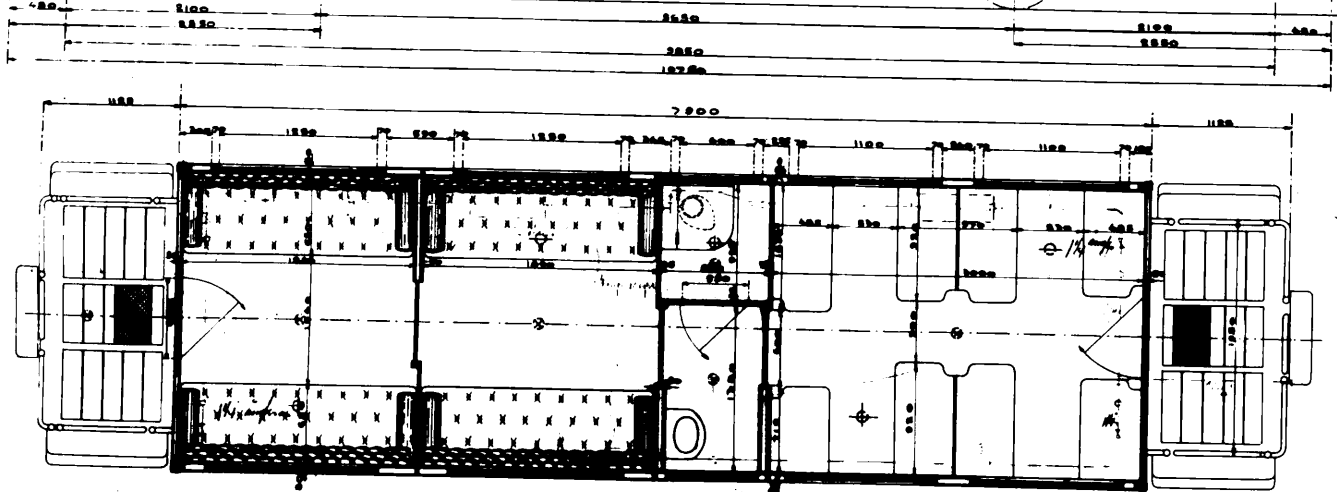
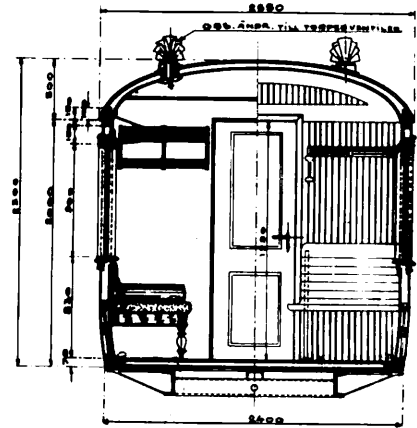
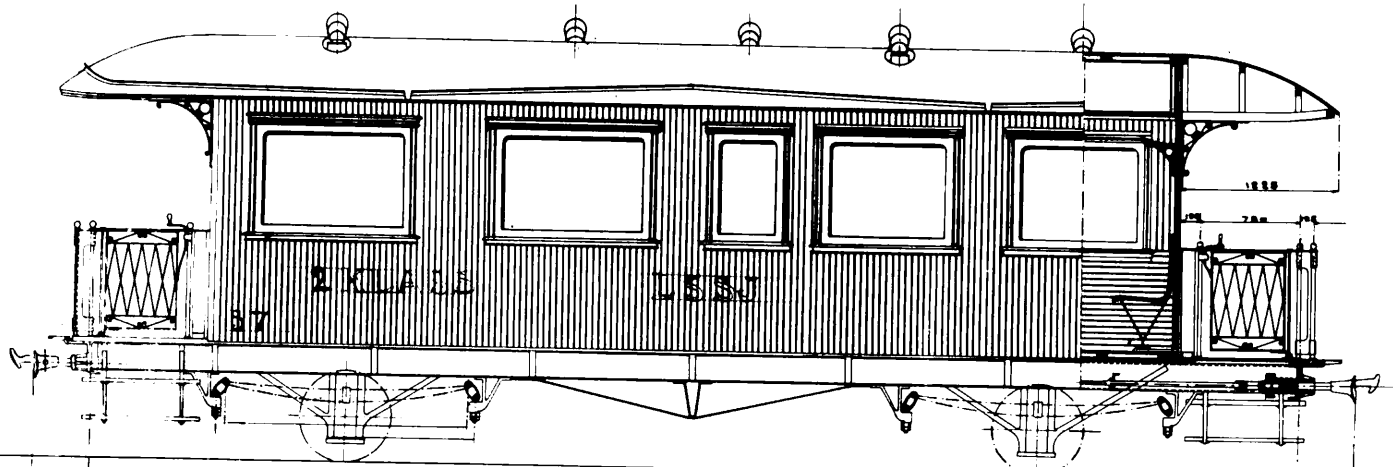
ТИЛЛ ЛОКОМОТИВ  
 РАМВЕРК  
 ШКАЛА 1:10

L  
 14070

5, 11  
 M...

KOMBILKASS PERSONVAGN FÖR 891/M SPÄRVÄG

Ritning No. 222  
Fack No. 222



8 1/2" 10000

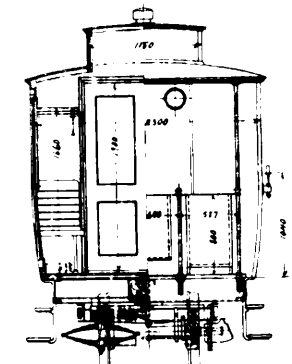
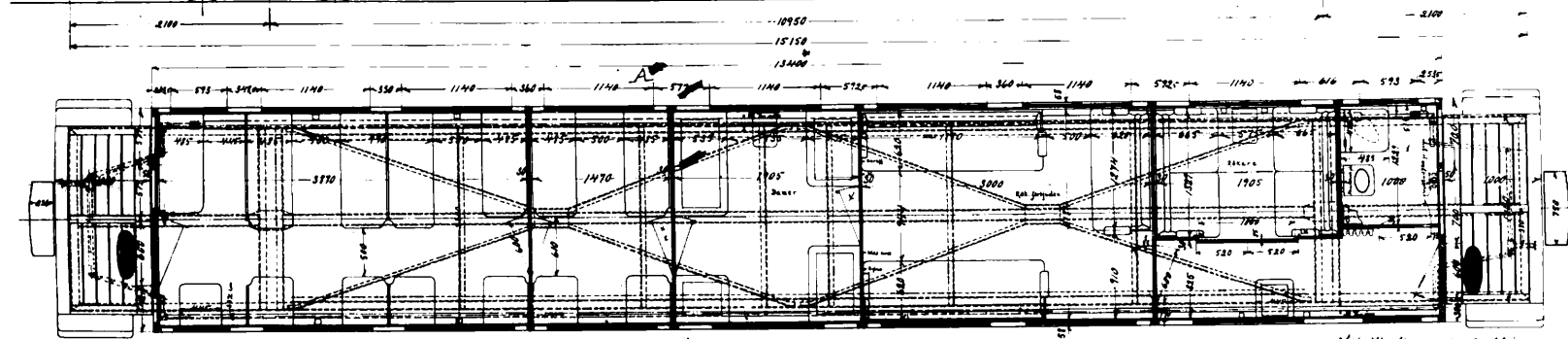
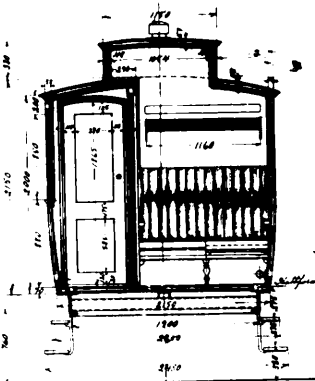
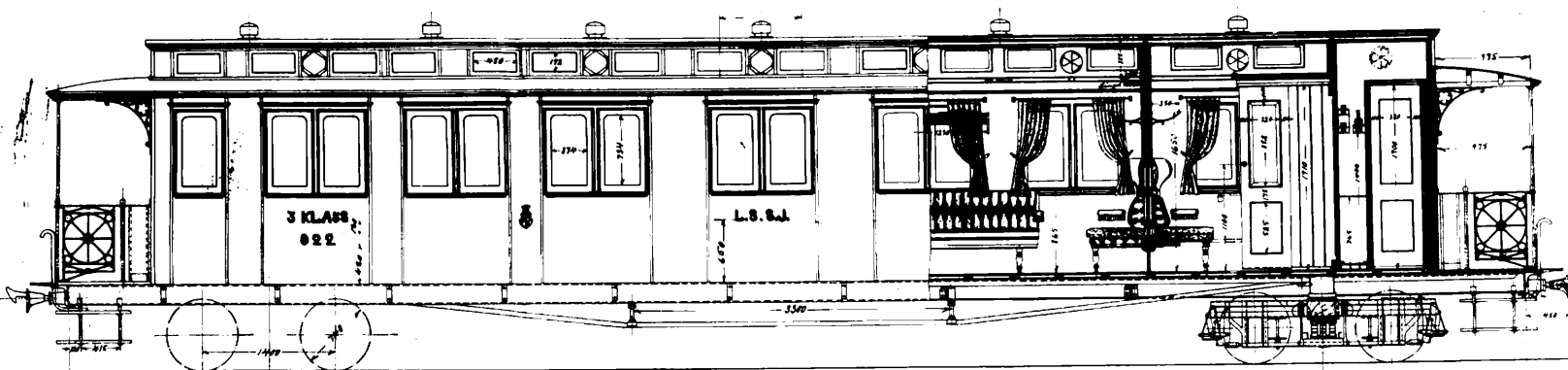
17002

LSSJ-2

# Kombi 2<sup>de</sup> och 3<sup>de</sup> kl. bogievagn.

för Rindöping-Skara-Årstad-Jönköping-järnväg.  
Stalen: 2/10 7/10 mått.

LSSJ  
No. 102



Stål. Alla dimensioner 35 mm godkännt

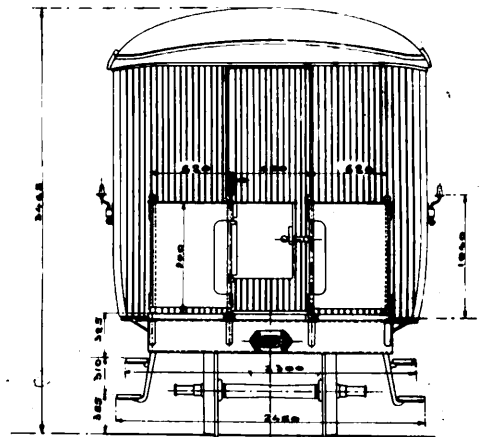
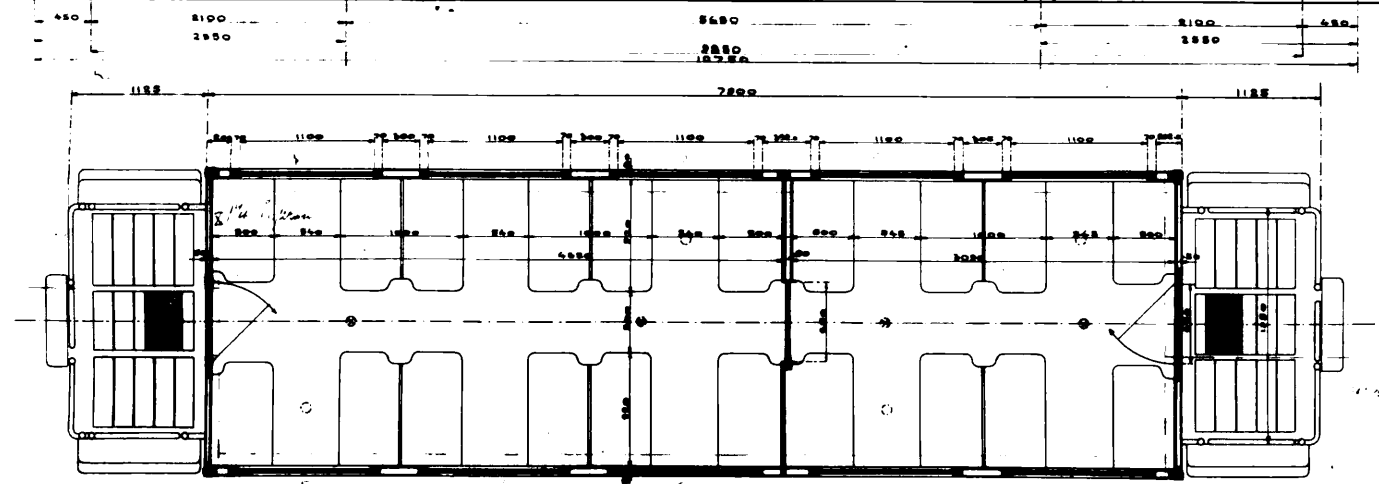
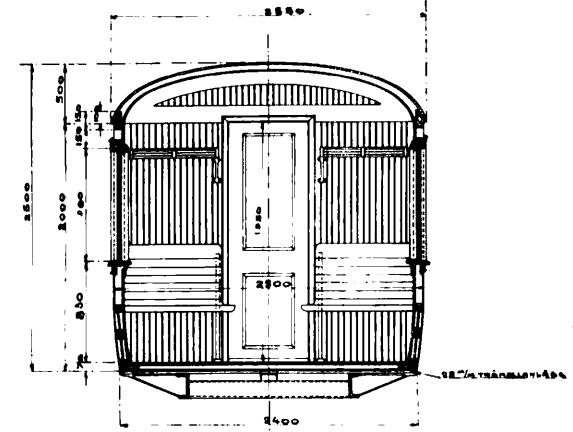
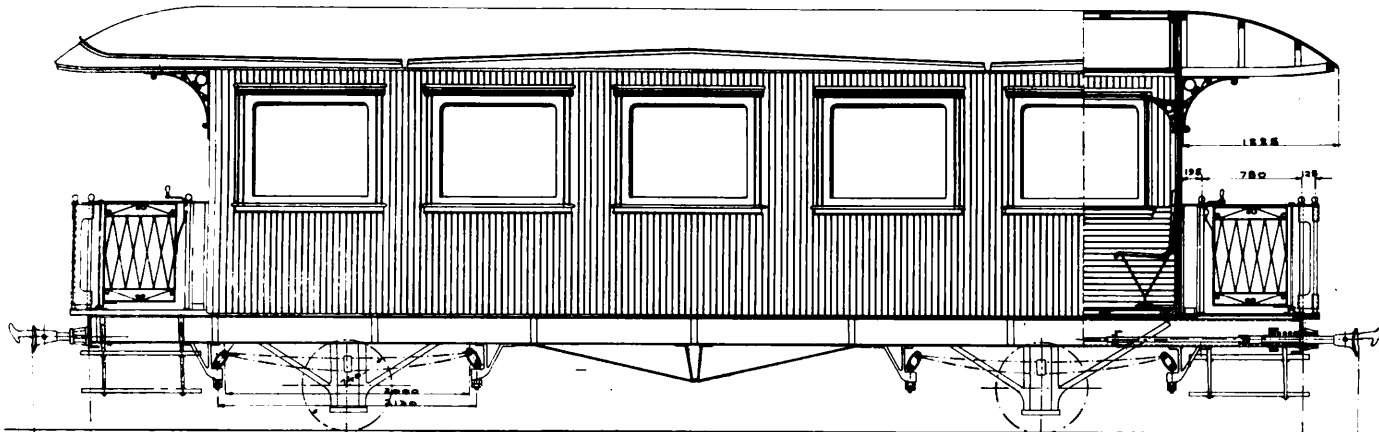
LSSJ 1

LSSJ-2



III KLASS PERSONVAGN FÖR 831/7A SPÄRVIDD

Ritning No. 880  
Fack No. 82

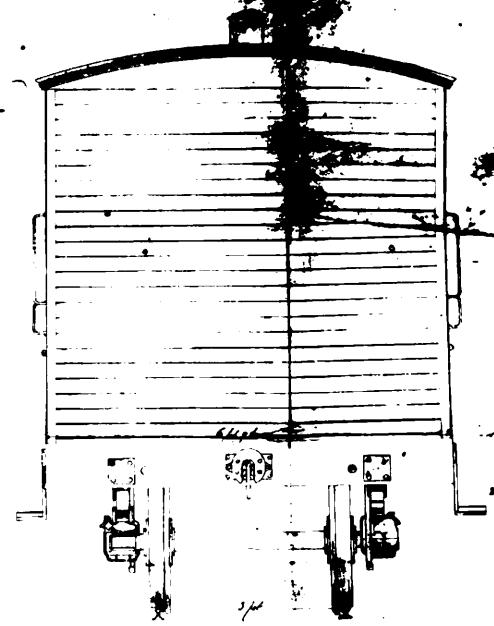
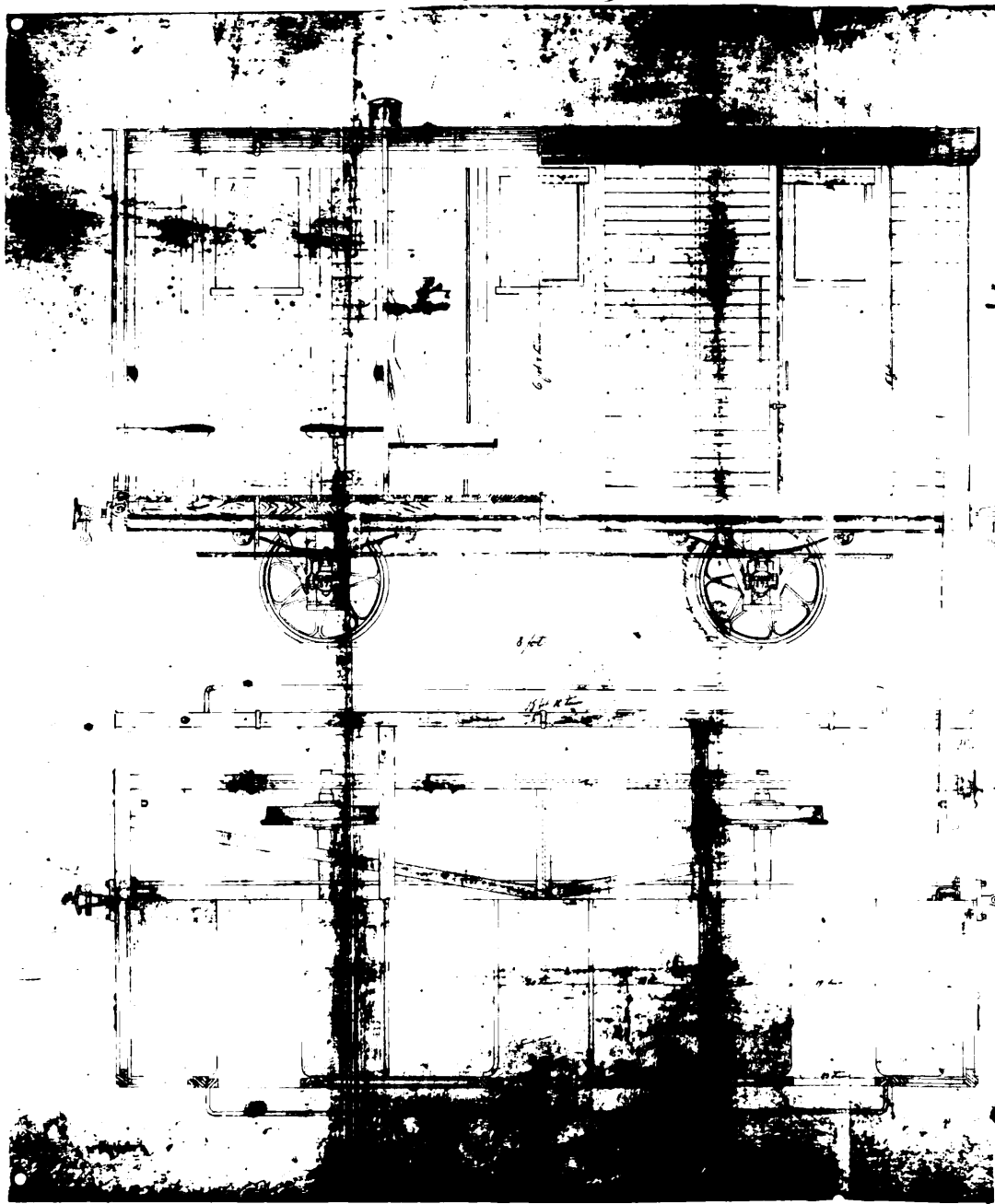


© BETERHAR LARPER  
LUSTABARE

1880

KVAB. DEN ...

LSSJ-2



PASSAGERARE-WAGEN  
F  
SKÅNSTORP JERNVÄG

Indukt. nr. 18 273

Heinrich Oplund  
1873

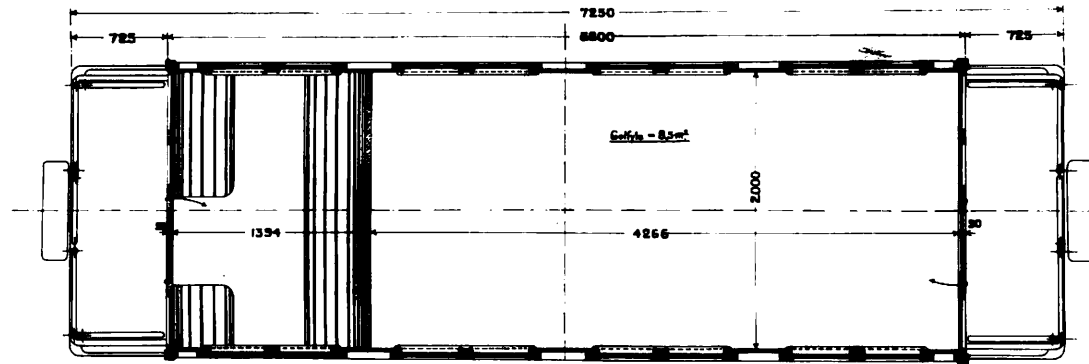
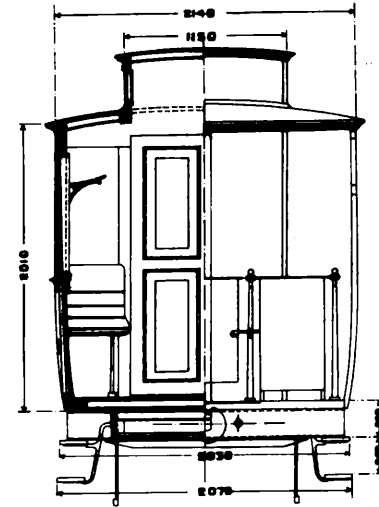
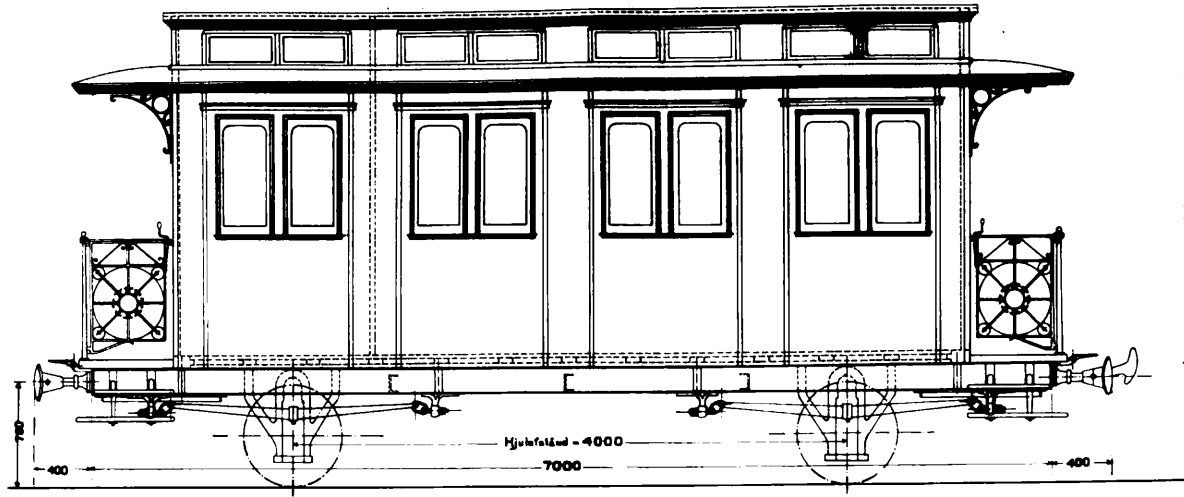
Skå. 70

G. H. Hansen, arkitekt  
i København, den 10. 11. 1873

3792

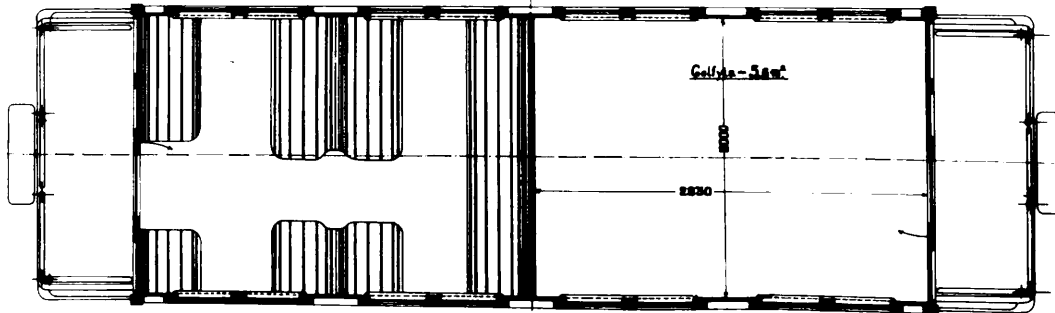
LSSJ-3

Löp.nr 10512.



Förslag till Postvagn för 0,890 m spårv.

Skala: 1/50.



2/4

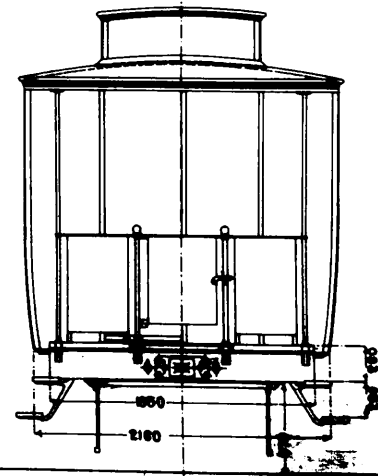
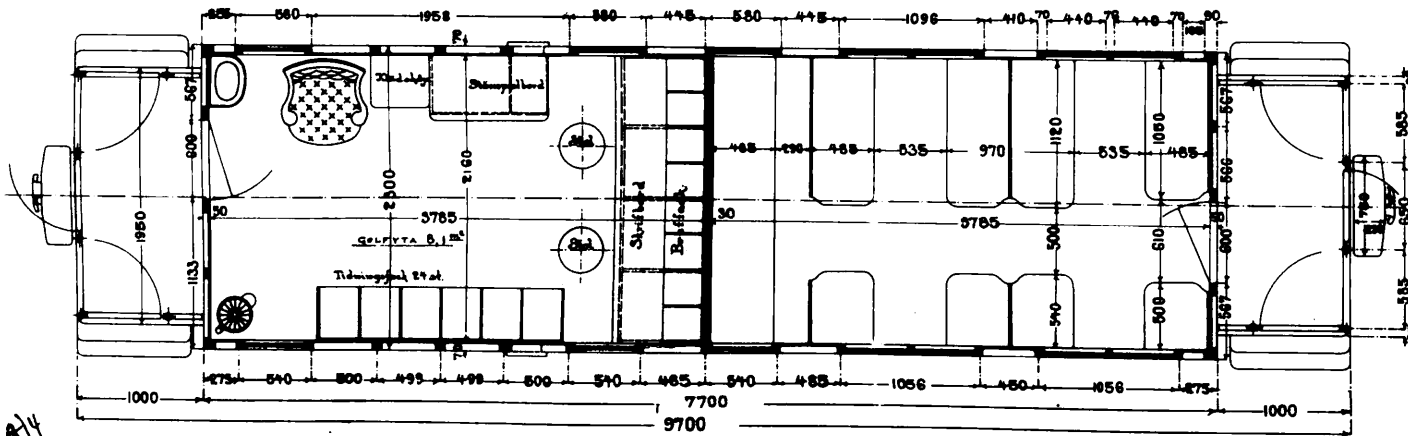
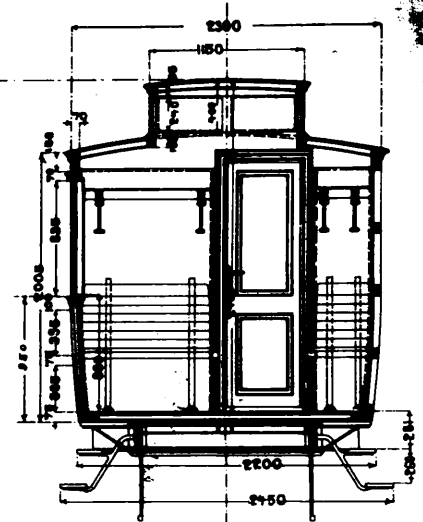
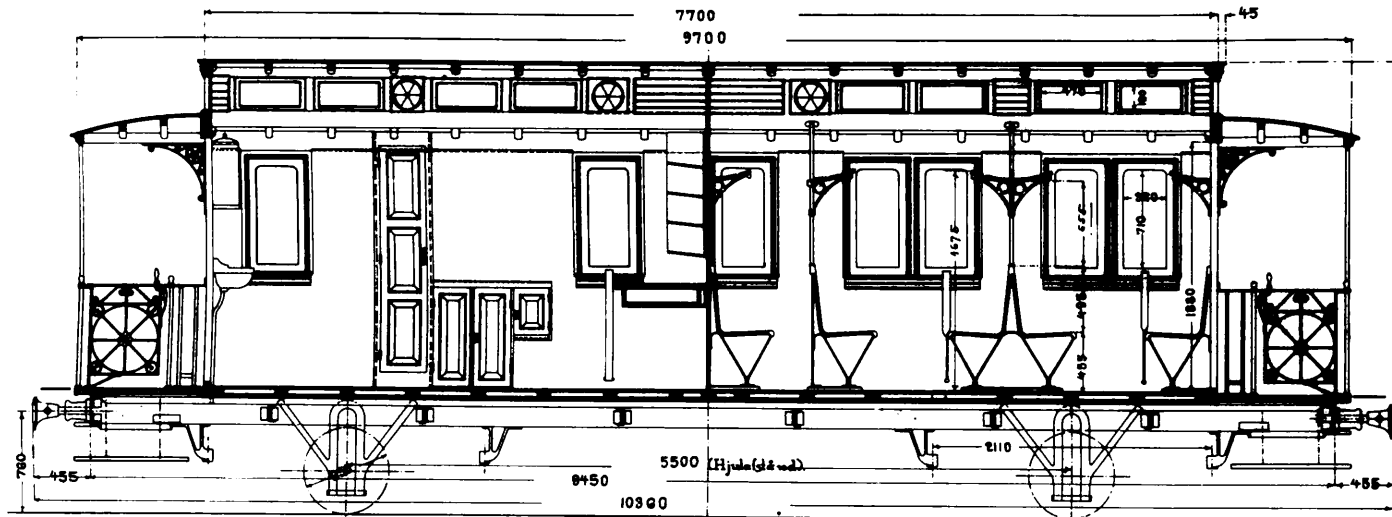
LSSJ-3

(at. för Lidköping Skara, Stenstorp Jernväg byggd vid G. M. W. år 1901.

Löpnr 11078.

Kombinerad III Klass- och Postvagn för 0,890 m<sup>2</sup> spårvidd. (Lit. CD)

Skala 1:20. 7/10 mått.

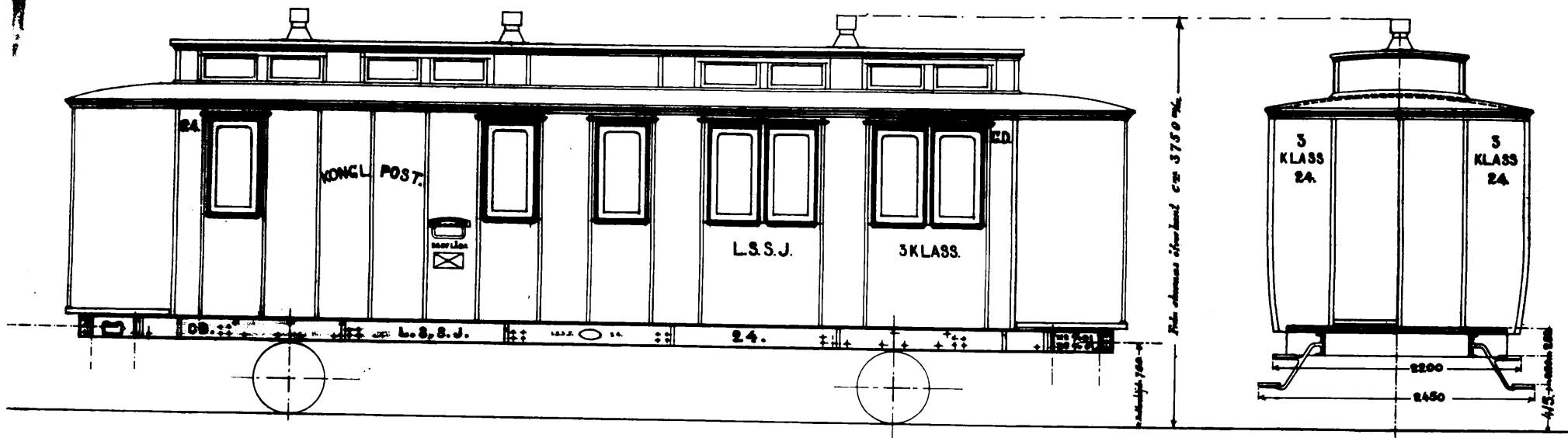


1764/4

1764/4

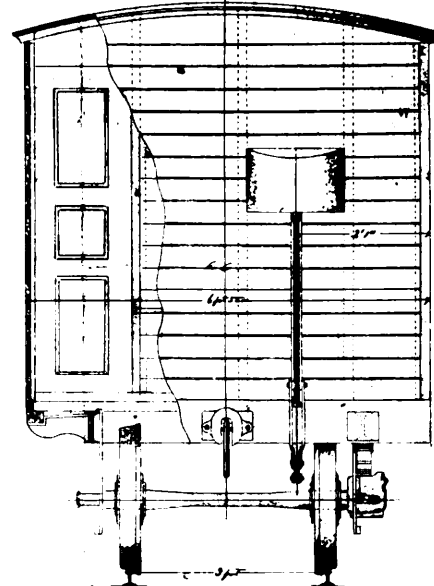
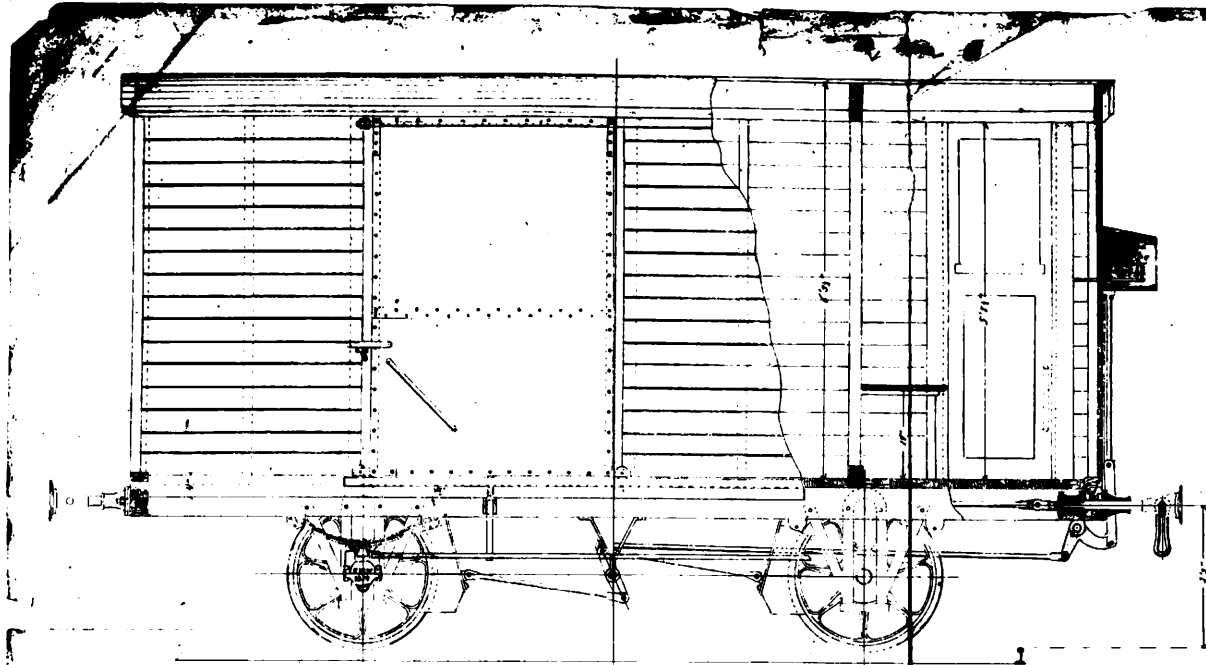
Rep. N<sup>o</sup> 11202

*Sedköping-Skara-Svanstorp-Järnväg.*  
*Märkningsritning till kombinerad 3<sup>de</sup> klass passagerare- och postvagn lit. 25.*  
*Skala 1:20.*



1767/4

LSSJ-3

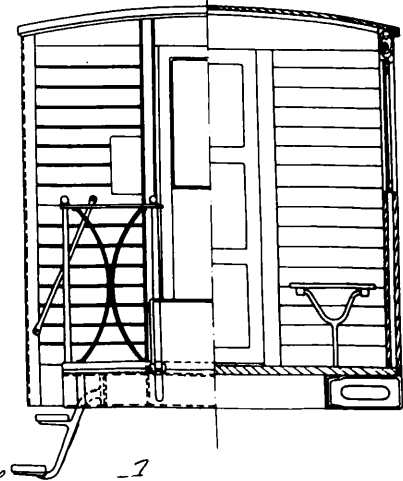
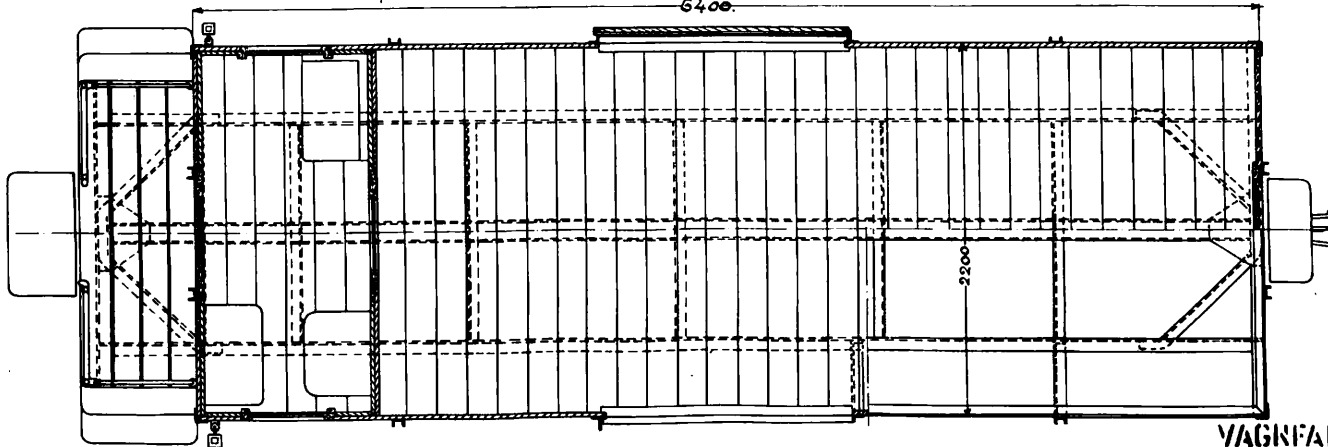
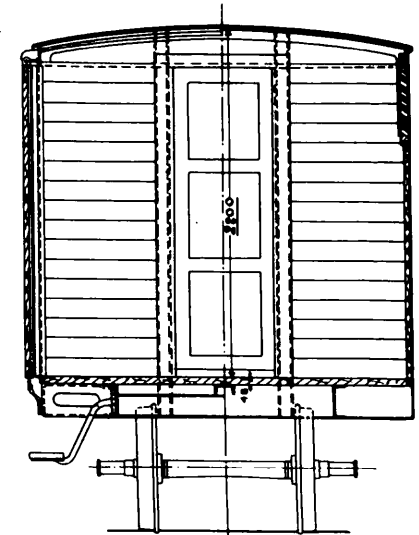
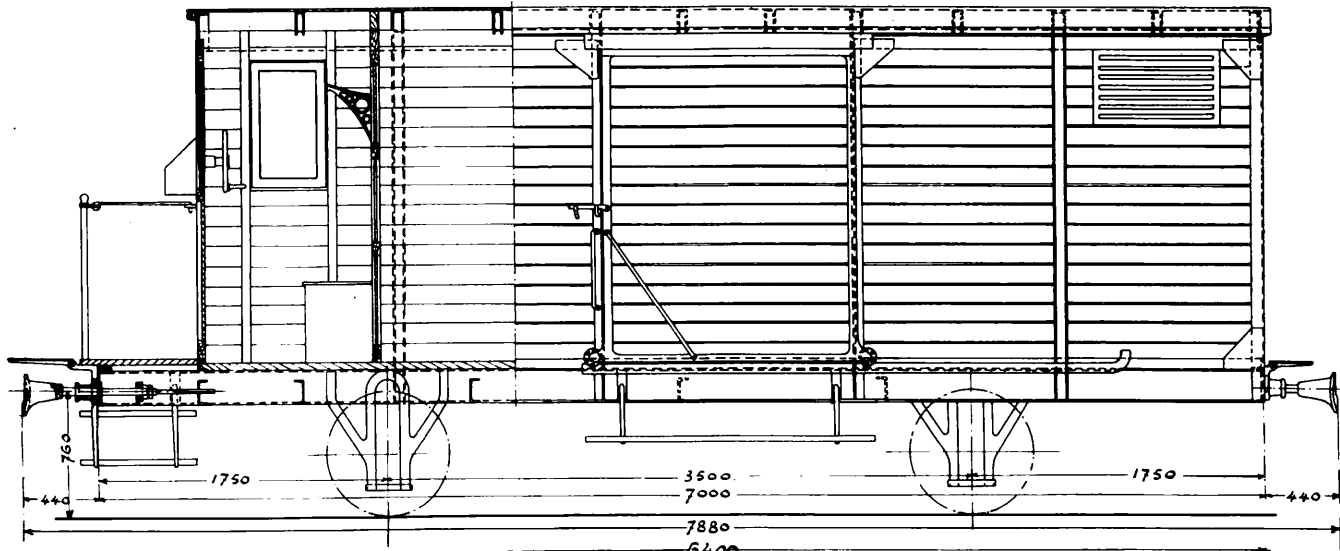


BAGAGE-WAGN  
till  
SKARA-STENSTORPS-JERNVÄG

Arvidsbacka  
1877

3793

Godsvagn lit. F för 891  $\frac{7}{8}$  sprr.  
Skala  $\frac{1}{20}$ .



4244.

LSSJ F 201 220  
VÅHJ F 12-K

VAGNFABRIKS  
AKTIEBOLAGET

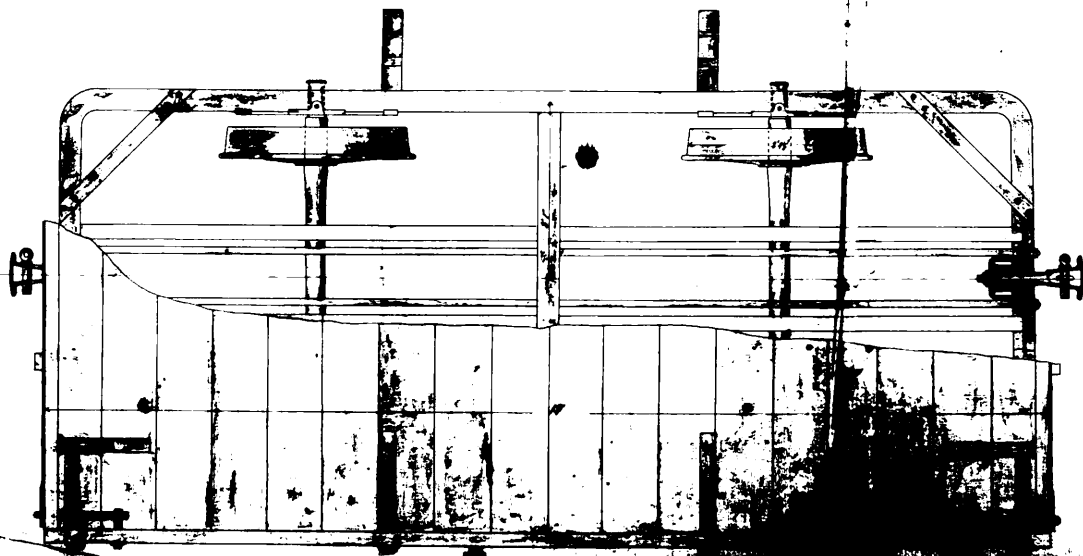
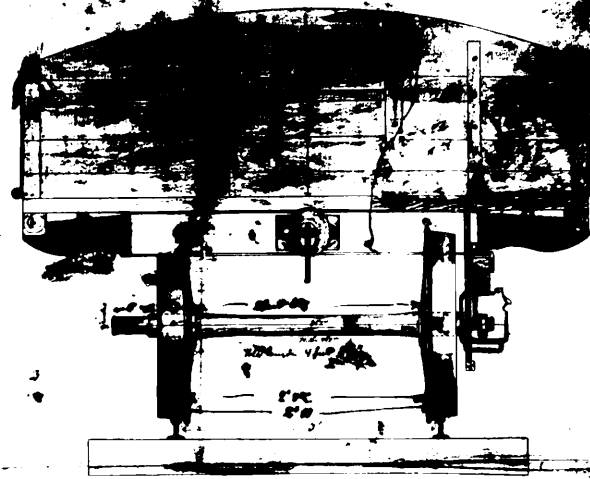
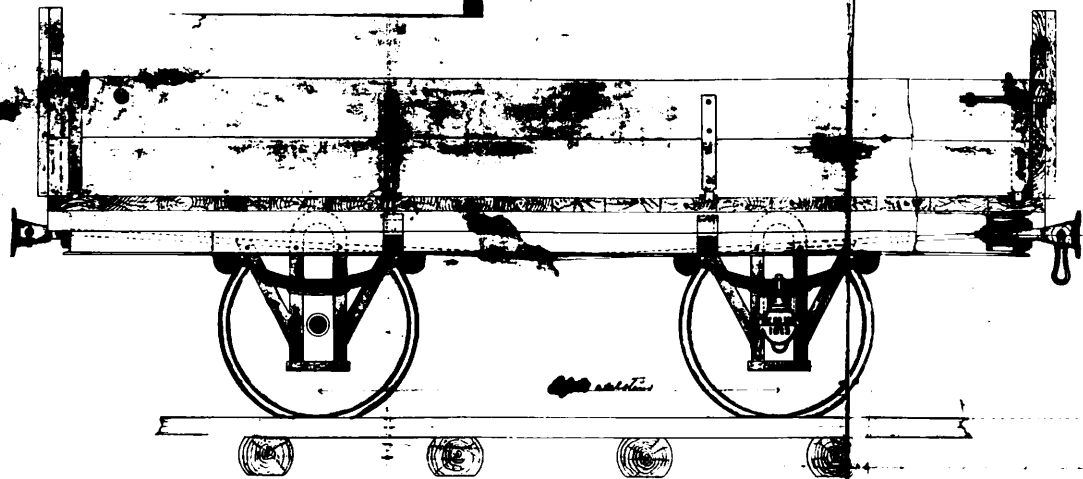
I SÖDERTJELGIE  
den 25. 5. 1905 *Ad. L.*

1





4220



*Skizze 18. 11. 1900*

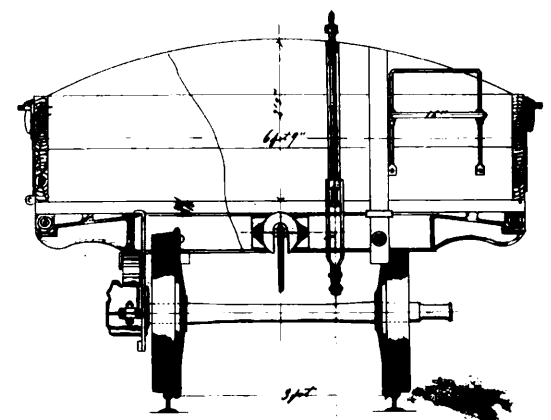
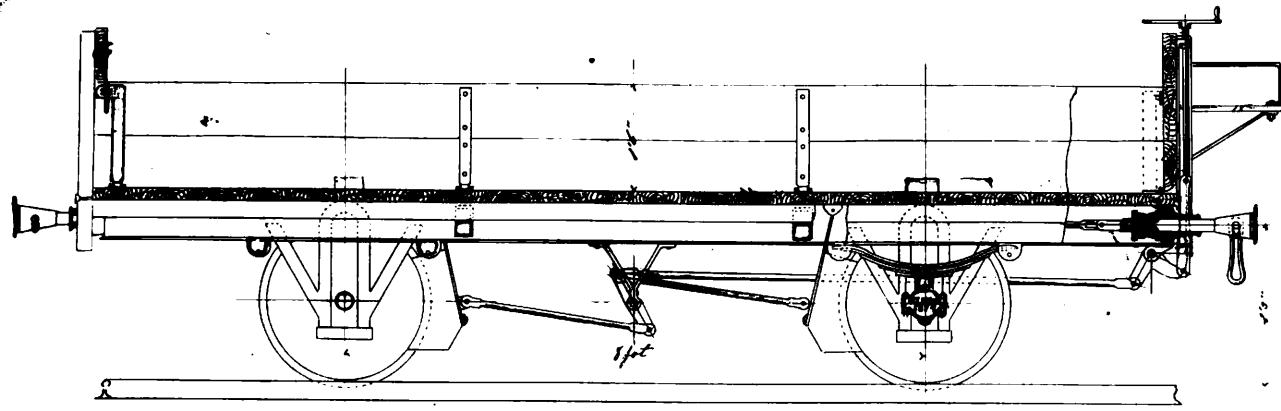
**LASTWAGEN**

**SKIBASTENERFORSKINGEN**

*Skizzen 18. 11. 1900  
Hans Christian*

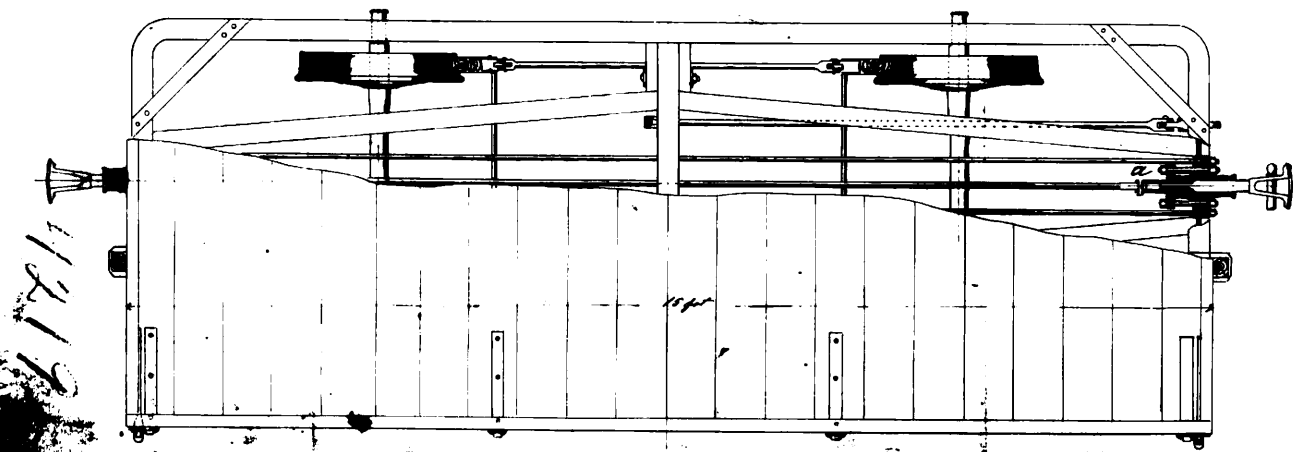
*Gezeichnet, und die Fertigung  
beauftragt, bei Bedarf  
Hans Christian*

*4220*



Scale 1/4" = 1'-0"  
a.s.

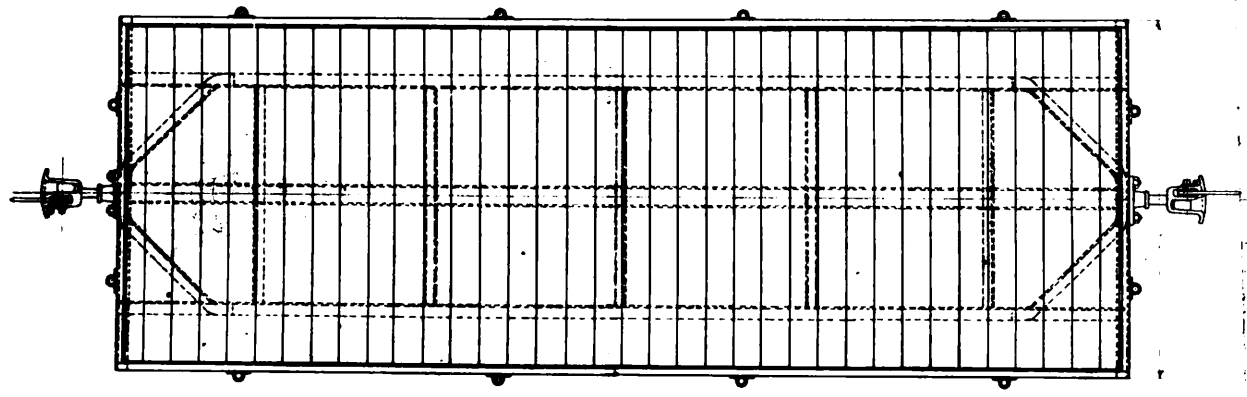
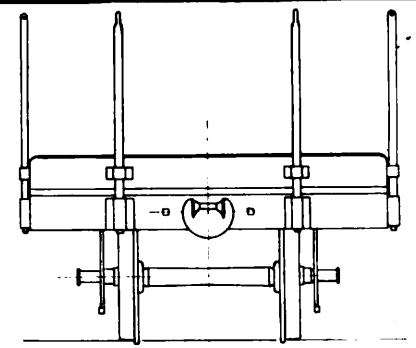
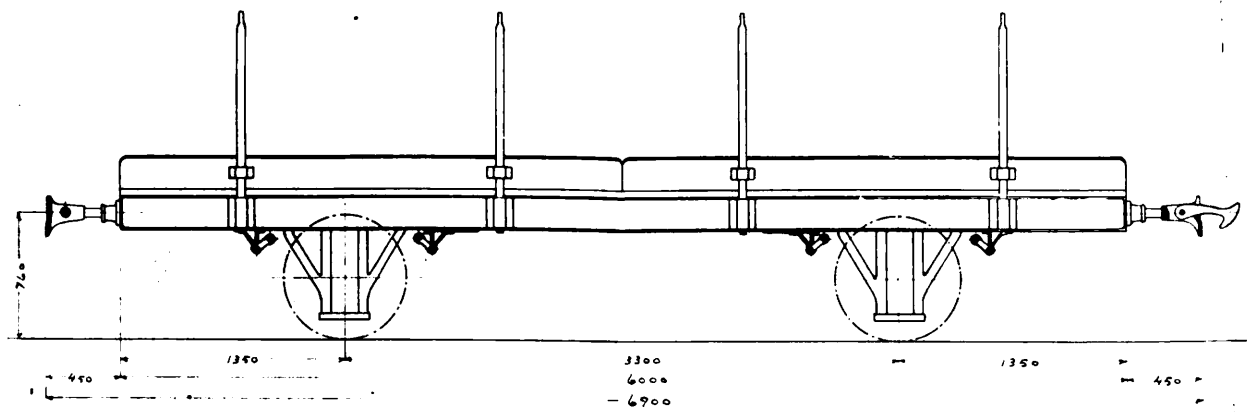
*Sketch and drawings  
for  
distributing mass materials from  
containers of 11' diameter*



11217

Fyllhör kontrakt af den 22 1910  
 mellan Lidköping Skara Stenstorps  
 Järnväg och Vagnfabriks A. B.  
 i Södertelge.

*W. M. ...*



N.N-VAGN MED LÖSA LÄMMAR.  
SPÄRVIDD 891 M/M.  
SKALA 1:20.

VAGNFABRIKS  
 AKTIEBOLAGET  
 I SÖDERTELGE  
 DEN 25 1910.

5145.



Totalt i fönst	29150 m <sup>2</sup>
Ackonationsv	19850 "
Mattarvakt	22800 "
Vallbörde	1300 "
Malningsv	3180 "
Dragningsv	2720 "
Angretningsv	11 000 "
Flyttv. Eldst	468 m <sup>2</sup>
Takv	3352 "
Total	58200 "
Omberäkning	9 "
Rovv. Totalt	615 "

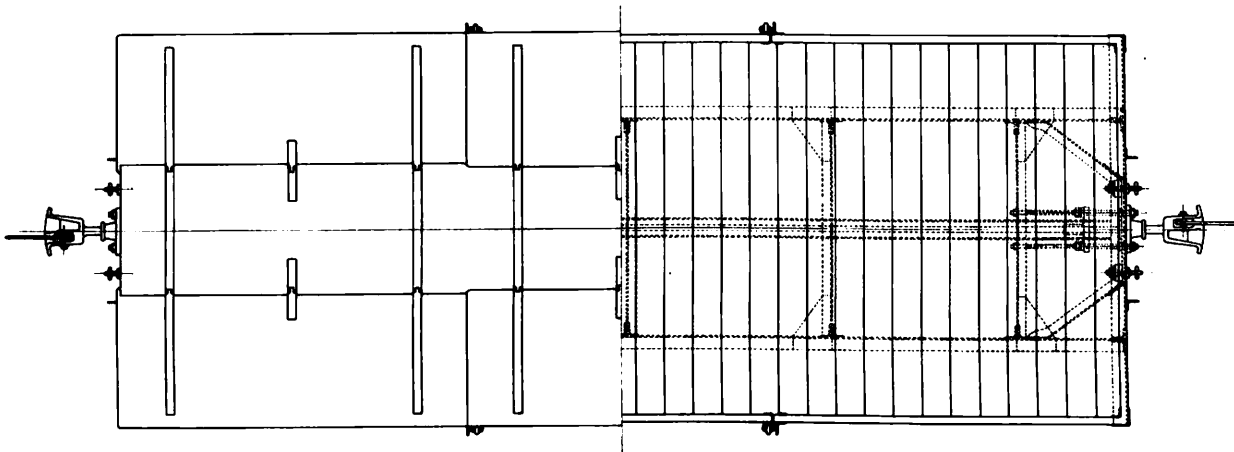
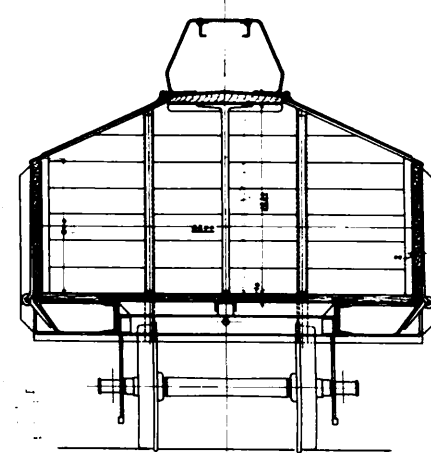
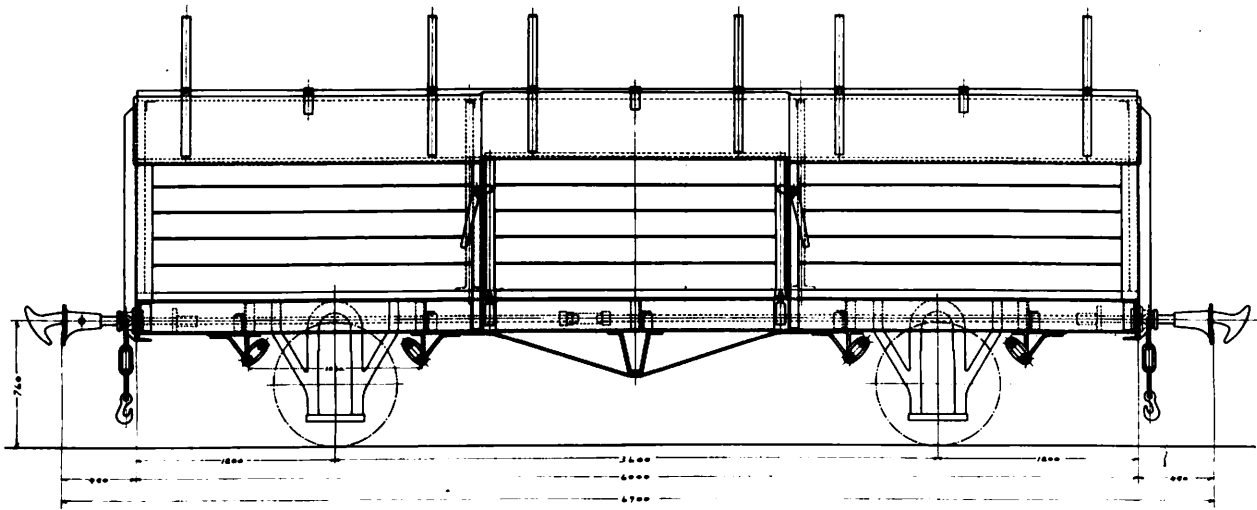
Medlemssal 1752  
 10 st. Gångstegen i parkett 11000  
 10 st. Gångstegen i parkett 1200  
 10 st. Gångstegen i parkett 1300  
 10 st. Gångstegen i parkett 1400  
 10 st. Gångstegen i parkett 1500  
 10 st. Gångstegen i parkett 1600  
 10 st. Gångstegen i parkett 1700  
 10 st. Gångstegen i parkett 1800  
 10 st. Gångstegen i parkett 1900  
 10 st. Gångstegen i parkett 2000

Rest flyttv. 1680  
 Totalt flyttv. 6320  
 Längd över buffert 3700

NO	BID NR	ST	INNEH.	GENSKAPNING	ENHET	Q	PRIS	BEHÖV
1	1	1	Stångbjelke	100x100	m	10	1000	100
2	2	1	Stångbjelke	100x100	m	10	1000	100
3	3	1	Stångbjelke	100x100	m	10	1000	100
4	4	1	Stångbjelke	100x100	m	10	1000	100
5	5	1	Stångbjelke	100x100	m	10	1000	100
6	6	1	Stångbjelke	100x100	m	10	1000	100
7	7	1	Stångbjelke	100x100	m	10	1000	100
8	8	1	Stångbjelke	100x100	m	10	1000	100
9	9	1	Stångbjelke	100x100	m	10	1000	100
10	10	1	Stångbjelke	100x100	m	10	1000	100
11	11	1	Stångbjelke	100x100	m	10	1000	100
12	12	1	Stångbjelke	100x100	m	10	1000	100
13	13	1	Stångbjelke	100x100	m	10	1000	100
14	14	1	Stångbjelke	100x100	m	10	1000	100
15	15	1	Stångbjelke	100x100	m	10	1000	100
16	16	1	Stångbjelke	100x100	m	10	1000	100
17	17	1	Stångbjelke	100x100	m	10	1000	100
18	18	1	Stångbjelke	100x100	m	10	1000	100
19	19	1	Stångbjelke	100x100	m	10	1000	100
20	20	1	Stångbjelke	100x100	m	10	1000	100
21	21	1	Stångbjelke	100x100	m	10	1000	100
22	22	1	Stångbjelke	100x100	m	10	1000	100
23	23	1	Stångbjelke	100x100	m	10	1000	100
24	24	1	Stångbjelke	100x100	m	10	1000	100

LJ/LHJ-1

KALKVAGN FÖR 891 M.M. SPRV.  
SKALA 1:10.



5289

H. J. R. JONSSON

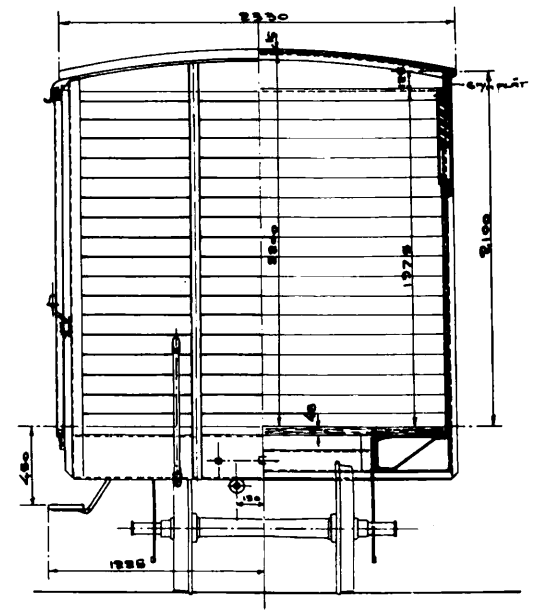
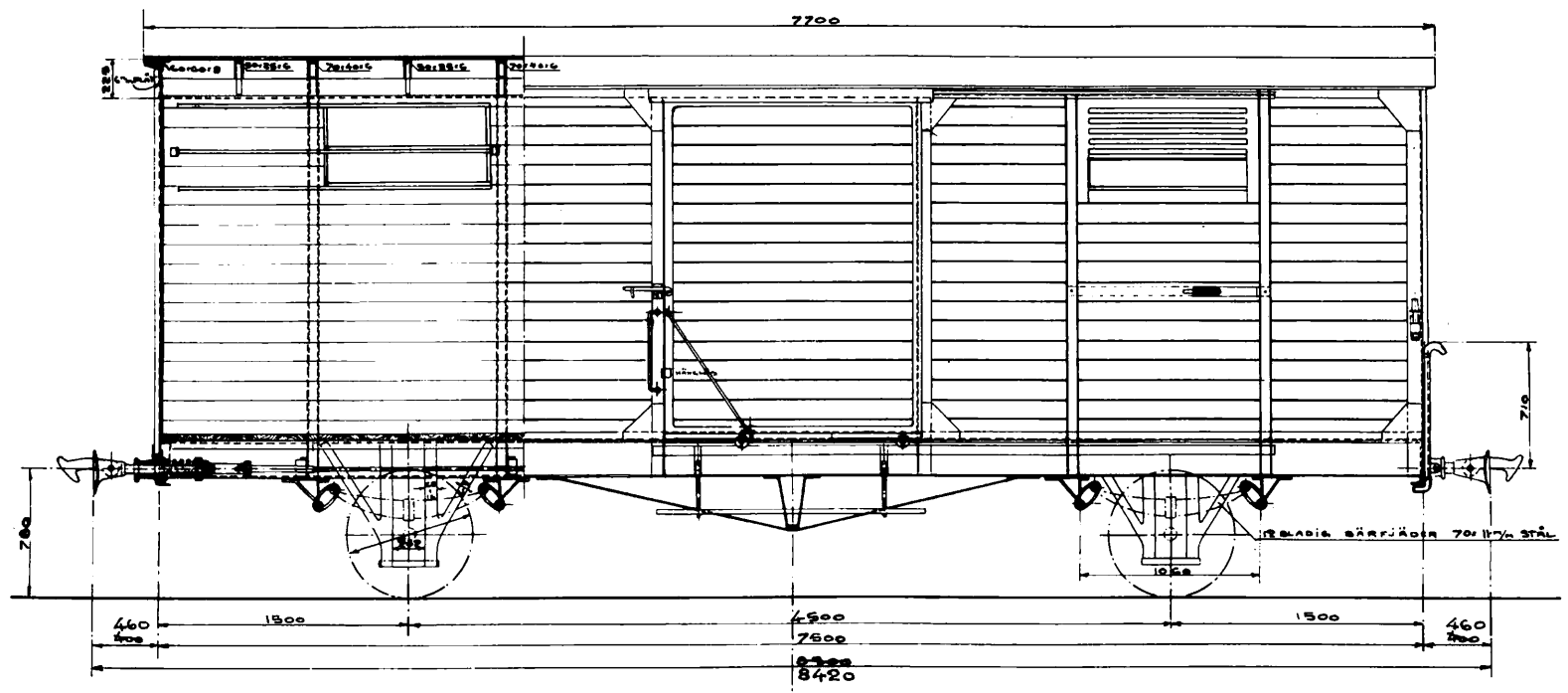
VAGNFABRIKS  
ARTIFABRIK  
i KÖPINGS  
174 010.

LJ/HLJ-1

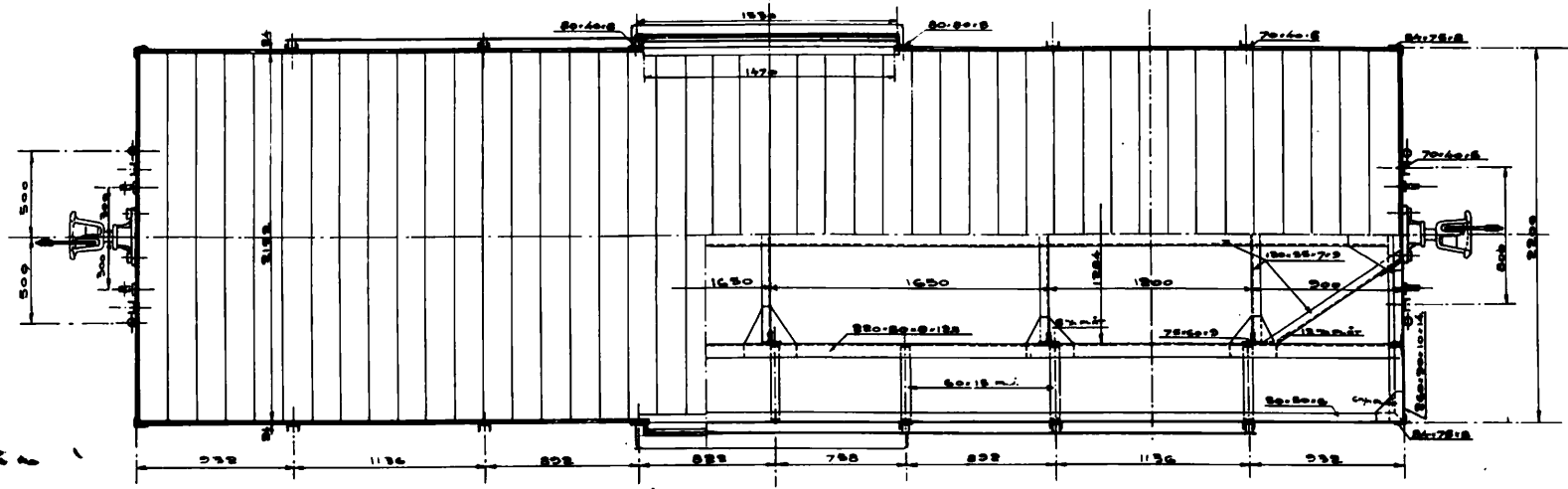
TÄGKT GODSVAGN LITT G. FÖR 821<sup>7</sup>/<sub>8</sub> SPÅRVIDD.

SKALA 1/20.

Ritning No 4031  
Eck No S.S.



201. f. 16 m.



X  
1G-4031

LJ/HLJ-1